

## Children Cry for Fletcher's

## CASTORIA

The Kind You Have Always Bought, and which has been in use for over 30 years, has borne the signature of and has been made under his personal supervision since its infancy. Allow no one to deceive you in this. All Counterfeits, Imitations and "Just-as-good" are but experiments that trifle with and endanger the health of Infants and Children—Experience against Experiment.

## What is CASTORIA

Castoria is a harmless substitute for Castor Oil, Paregoric, Drops and Soothing Syrups. It is Pleasant. It contains neither Opium, Morphine nor other Narcotic substance. Its age is its guarantee. It destroys Worms and allays Feverishness. It cures Diarrhoea and Wind Colic. It relieves Teething Troubles, cures Constipation and Flatulency. It assimilates the Food, regulates the Stomach and Bowels, giving healthy and natural sleep. The Children's Panacea—The Mother's Friend.

## GENUINE CASTORIA ALWAYS

Bears the Signature of

*Chas. H. Fletcher*

The Kind You Have Always Bought

In Use For Over 30 Years

THE CENTAUR COMPANY, 77 MURRAY STREET, NEW YORK CITY.

## Canada's Wheat Supply

OTTAWA, March 9, 1915.—A press bulletin issued to-day by the Census and Statistics Office gives the results of a special inquiry for the purpose of ascertaining the stocks of wheat in Canada on February 8, 1915. The inquiry, carried out by direction of the Hon. Sir George Foster, Minister of Trade and Commerce, and conducted by the Census and Statistics Office in conjunction with the Department of Trade and Commerce and the Board of Grain Commissioners, was effected by means of schedules addressed to elevator, flour mill and railway companies and to crop-reporting correspondents for the estimation of quantities in farmers' hands. Compilation of the returns received shows that the amount of wheat, and of wheat the equivalent of flour, in Canada on February 8 last was 79,130,593 bushels, or, if allowance be made for a small proportion of non-replies, an aggregate in round numbers of 80 million bushels. The total of 79,130,593 bushels is distributed as follows: terminal elevators 2,853,679 bushels, railway elevators 1,213,952 bushels, other elevators 26,776,246 bushels, flour mills 6,160,840 bushels, in transit by rail 12,571,876 bushels and in farmers' hands 29,554,000 bushels. The result of the inquiry shows that the quantity of wheat in Canada should be amply sufficient to meet all requirements between now and the next harvest. For seedling this spring and for food during the next six months, it is estimated that 444 million bushels will be required, thus leaving, on February 8, 1915, in addition to the usual small quantity of imports, a balance of 354 million bushels for export and reserve. From February 8 to March 2, 36,370 bushels of wheat, and flour expressed as wheat, were imported and 6,741,900 bushels were exported. The inquiry took no account of quantities of wheat flour in the hands of wholesale and retail vendors in towns and villages throughout Canada, nor of quantities of wheat in local grist mills. These quantities, although relatively small in individual cases, amount to a considerable aggregate, tending to show that the estimate of 80 million bushels is not excessive.

## Children Cry FOR FLETCHER'S CASTORIA

A painful accident happened at D. E. Wallace's saw-mill, Thamesville, last Friday morning, when a log rolled onto Alf. Kealey's right foot, crushing his instep.



## Many women with disfigured complexions

never seem to think that they need an occasional cleansing inside as well as outside. Yet neglect of this internal bathing shows itself in spots, and sallow complexions—as well as in dreadful headaches and biliousness. It is because the liver becomes sluggish, and waste matter accumulates which Nature cannot remove without assistance. The best

## CHAMBERLAIN'S TABLETS

remedy is Chamberlain's Stomach and Liver Tablets, which stimulate the liver to healthy activity, remove fermentation, gently cleanse the stomach and bowels and tone the whole digestive system. Sure, safe and reliable. Take one at night and you feel bright and sunny in the morning. Get Chamberlain's Tablets—druggists 25c., or by mail from—

Chamberlain Medicine Company, Toronto



## MILITARY EFFECTS FOR CHILDREN'S COATS.



BROWN STEEL COAT.

The little coat pictured here is suitable for the small girl's school wardrobe. It is one of the new models for spring. The material is self striped brown silk and wool mixture. The wide collar and deep cuffs are banded with dark brown moire. There is a very wide belt, with a very decorative application of buttons.

The new coats for children's spring wear are made in a great variety of attractive styles. Covert cloth, serge, gabardine, poplin and checked fabrics are modish. They are without much elaboration, the trimming being confined to the collar and cuffs. Silks and satins in white or matching colors are most frequently used on these. For later wear silk and satin coats will be permissible for dressy occasions. Taffeta, faille and poplin are considered suitable for these.

Many of the new coats are cut on short waisted lines. The belt is a characteristic feature. The lower part of the coat is given the popular flare. The sleeves are set in as a rule, although some examples of the modified kimono sleeve will be used.

The military influence is seen even in these juvenile coats. Many of them are trimmed with gilt, gun metal or silver braid and buttons. Army and navy colors are favored. One sees models of navy blue, army gray, Russian green and Belgian blue.

Wraps which are very fair imitations of the English topcoat are carried out in covert cloth. Decorative pockets, wide belts and skillfully applied collars and cuffs are features of many covert coats.

Lingerie collars and cuffs are to be very much worn. These will give a charming finish to the simple coats. Linen, pique, organdie and lawn sets are being shown for children's suits and coats.

## Using Up Meat Scraps.

A nice pudding may be made with cold meat. Take pieces of minced cooked beef and lean ham, a quarter of a pound of suet, half a pound of flour, a chopped onion, pepper, salt and a little finely chopped parsley. Rub the chopped suet into the flour, add pepper and salt, meat, onion, parsley, and, if liked, a dash of curry powder. Mix these ingredients, moisten with a little cold stock to make it cling together, but it must not be wet. Place in a greased pudding basin, tie over with a pudding cloth and steam steadily for two hours. Turn out to serve and pour gravy round.

## Smart Sleeves.

An additional smartness is imparted to the sleeve of the coat suit by the embroidered clock on the outer side. Either black or colored silk to match the suit may be used for the clock.

Clean Stomach. Clear Mind.—The stomach is the workshop of the vital functions and when it gets out of order the whole system clogs in sympathy. The spirits flag, the mind droops and work becomes impossible. The first care should be to restore healthful action of the stomach and the best preparation for that purpose is Parmelee's Vegetable Pills. General use for years has won them a leading place in medicine. A trial will attest their value.

## SHRINKAGE OF CORN.

How much will corn shrink in weight during the year is a question often asked by farmers. For eight years the Iowa experiment station carried on a thorough and complete test with the following results for each month from the time of cribbing: November, 5.2 per cent; December, 1.7 per cent; January, 6 per cent; February, 3 per cent; March, 1.9 per cent; April, 3.1 per cent; May, 1.9 per cent; June, 1.6 per cent; July, 1 per cent; August, 5 per cent; September, 4 per cent; October, 0; total shrinkage for the year, 18.2 per cent, or nearly one-fifth.

## WORTH OF WOOD ASHES.

Farmers Are Advised Not to Waste Valuable Constituents.

Don't waste wood ashes. Apply them, as produced, to acid soils. This is the advice of A. R. Whitson, head of the Wisconsin state soils laboratory. It is of particular value to farmers in upper Wisconsin and others who actually have waste wood to burn.

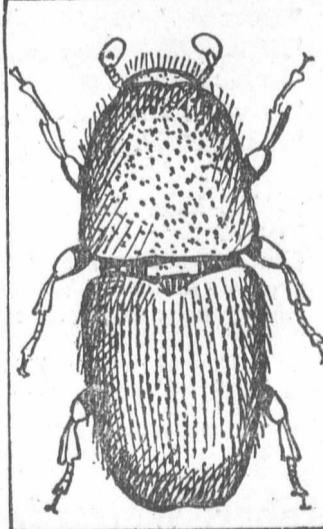
Wood ashes contain a large proportion of lime, which makes them of value in correcting acid soils. Oftentimes land intended for clover or alfalfa can be better prepared for the crop by a top dressing of fresh wood ashes, either hard or soft wood being equally satisfactory. Such a treatment will be of especial value on marshy and sandy soils.

If not allowed to leach out, wood ashes are also rich in potash and so form a home source for a much needed element. Practically all of our potash supply has been imported into this country from certain of the countries of Europe now at war, which fact has caused considerable concern with many here who purchase in large quantities.

Whether or not it will pay to use ashes for agricultural purposes depends upon the distance they have to be hauled. When buying ashes the purchaser should satisfy himself that the material is neither adulterated nor full of coal residue.

## Orchard Bark Beetles.

Bark beetles, or shot hole borers, cause more or less damage to fruit trees every year. They are particularly apt to attack weakened, scale infested trees in cities and in some seasons have been pests of the first order in the peach growing belt along Lake Erie. Some kinds of trees, such as peach and cherry, exude large quantities of gum through the holes made by the beetles, and the surface of the bark may be coated over with pints to gallons of this gum, depending upon the severity of the attack and the size and vigor of the trees. Again, such trees as apple and pear do not gum at all under attack. The small white grubs burrow in characteristic fashion in the sapwood, often killing the trees, and



THE ORCHARD BARK BEETLE.

the minute blackish or brownish beetles later issue through small openings in the bark resembling fine shot holes. These beetles also do damage by entering the twigs at the bases of the buds and by making feeding burrows in the trunks and large limbs of the trees of their choice. The Ohio agricultural experiment station recommends as a preventive measure against the pests the creating of an unfavorable environment for propagation, the regular burning of all dead trees each year and that all dead and sickly limbs, branches and stubs be cut away and burned. Very scabby and dead trees should also be removed and burned. Whitewashing and similar treatment as preventive of attack have proved of much value.

## The Newest Steps.

You may talk of fancy dances, Your fox trots and your glides, Your Argentine prances And the latest Gotham slides; You may prattle of the tango, Boost the steps from o'er the sea, Praise the latest from the Congo, Or the newest from Parce; Rave about the hesitation, How it drives dull care away, And express your admiration For the steps of cabaret— But the steps that catch your fancy And at home cause endless talk Are those first ones—kinda prancy— As the baby learns to walk.

The most obstinate corns and warts fail to resist Holloway's Corn Cure. Try it.

## MEDICAL.

JAMES NEWELL, PH. B., M.D.  
R. C. P., M. B. M. A., England.  
Watford, Ont.

OFFICE—Main St., next door to Merchants Bank. Residence—Front street, one block east of Main street.

R. G. KELLY, M.D.

Watford, Ont.

OFFICE—Main street, formerly occupied by Dr. McCleary. Residence—Front St., East.

THOS. A. BRANDON, M.D.

WATFORD, ONT.

FORMERLY OF SARNIA GENERAL HOSPITAL and Western Hospital of Toronto.  
OFFICE—Main Street, in office formerly occupied by Dr. Gibson.

## DENTAL.

GEORGE HICKS.

D.D.S., TRINITY UNIVERSITY, J. D. S., Royal College of Dental Surgeons, Postgraduate of Bridge and Crown work, Orthodontia and Porcelain work. The best methods employed to preserve the natural teeth.  
OFFICE—Opposite Taylor & Son's drug store, MAIN ST., Watford.  
At Queen's Hotel, Arkona, 1st and 3rd Thursday, of each month.

G. N. HOWDEN

D.D.S., L.D.S.

GRADUATE of the Royal College of Dental Surgeons, of Ontario, and the University of Toronto. Only the Latest and Most Approved Appliances and Methods used. Special attention to Crown and Bridge Work. Office—Over Dr. Kelly's Surgery, MAIN ST.—WATFORD

## Veterinary Surgeon.

J. McILLICUDDY

Veterinary Surgeon,

HONOR GRADUATE ONTARIO VETERINARY College, Dentistry a Specialty. All diseases of domestic animals treated on scientific principles.  
Office—Two doors south of the Guide-Advocate office. Residence—Main Street, one door north of Dr. Brandon's office.

## CIVIL ENGINEER.

W. M. MANIGAULT,

ONTARIO LAND SURVEYOR

AND CIVIL ENGINEER,

Box 800. STRATHROY, ONTARIO

## Auctioneer

J. F. ELLIOT.

Licensed Auctioneer.

For the County of Lambton.

PROMPT attention to all orders, reasonable terms. Orders may be left at the Guide-Advocate office.

## INSURANCE

J. H. HUME.

AGENT FOR FIRE, ACCIDENT AND SICK BENEFIT COMPANIES. REPRESENTING

Five Old and Reliable Fire Insurance Companies.

If you want your property insured please call on J. H. HUME and get his rates.

—ALSO AGENT FOR—

C. P. R. Telegraph and Canada Permanent Loan and Saving Co.

Ticket Agent For C. P. R.—Tickets sold to all points in Manitoba, Northwest and British Columbia

## THE LAMBTON

Farmers' Mutual Fire Insurance Company.

(Established in 1875)

J. W. KINGSTON President.  
JAMES SMITH Vice-Pres.  
JAMES ARMSTRONG, DIRECTOR.  
A. G. MINIELLY, DIRECTOR.  
THOS. LITHGOW, DIRECTOR.  
QUILFORD BUTLER, DIRECTOR.  
W. G. WILLOUGHBY, MANAGER AND SEC. TREAS.  
J. F. ELLIOT, FIRE INSPECTORS.  
R. J. WHITE, AUDITOR.  
P. J. McEWEN, AUDITOR.  
ALEX. JAMIESON, AUDITOR.  
PETER McPHEDRAN, Wanstead, P.O. AGENT for Warlock and Plympton.

LY  
THEM

g And Old



Ess. 25th. 1912. he only pill. y of thinking. no gripping. lenty for any. oe. My wife. ion. Wetried. ndar without. large sums of. ed on "Fru. too much in

the family for. would not use. so we can get

and no distress. ed them. and our whole

HAMMOND. red by "Fru. happy to tel. on these woa. n fruit juica. l, trial size 25c. receipt of price. 3, Ottawa.

## IES.

## 17 C.O.F.

ular meetings the. l and fourth. ays of each. at 8 o'clock. t Room over. Ford's store, Main. Watford.  
Smith, E. R. J. Collier, P. Sec.

## Y FARM

## OOD

## attle

## n Sheep

Proprietor  
Ontario

## LLIAMSON

Ripping, Turning,  
kinds of general  
our best attention.

WATFORD  
ARMY BARRACKS)

## NK RAILWAY

## SYSTEM

## TABLE

Station s follows

9 ..... 8 44 a.m.

..... 2 55 p.m.

..... 9 09 p.m.

EAST

0 ..... 7 43 a.m.

6 ..... 11 02 a.m.

2 ..... 3 00 p.m.

2 ..... 5 16 p.m.

n, Agent Watford.

## IBING LIST

## ADVOCATE AND

Weekly Star \$1 85

Empire..... 1 85

Jun..... 1 85

ree Press... 1 85

Advertiser... 1 65

Advertiser... 2 00

er..... 1 40

Witness... 1 85

or..... 1 85

Advocate... 2 35

..... 3 00

..... 3 00

..... 4 00

..... 4 00

an..... 4 75

Free Press... 4 00

Free Press... 3 00

Advertiser... 3 00

Advertiser... 3 00