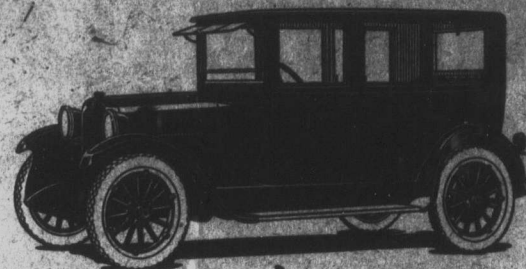
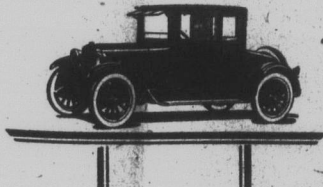


DODGE BROTHERS SEDAN

Only material of the finest grade is used in the construction of this car. Drop Forgings and Vanadium Steel are used in all parts of Dodge Brothers Cars that are subject to stress and strain and continual wear. The value of this material is measured in extra years of satisfactory service.



DODGE BROTHERS BUSINESS SEDAN

The body is built entirely of steel. This construction gives the Sedan a sturdy firmness of body structure heretofore unknown. The rear compartment furnishings are removable, seat, side and back cushions, seat frame, foot rest and carpet, giving at a moment's notice a steel wall carrying a compartment of 64 cubic feet. Upholstery, Genuine blue Spanish leather.

The Dodge Brothers Motor Car is the Best Car for this Country on the Market

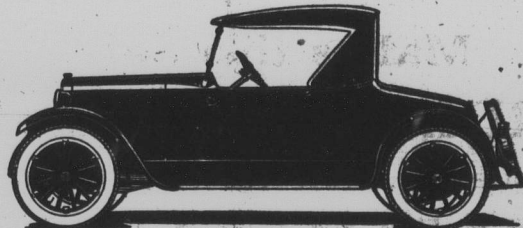
and gives entire satisfaction to all owners. Ask any person who has ever driven a Dodge Brothers Car

Why Experiment with any Car which is Unknown in this Country?

Prices of Dodge Brothers Cars

Touring Car	\$1440	Panel Side Bus	\$1535
Roadster	1410	Chassis, No. 1	1166
Sedan (Type A)	2215	Chassis, No. 3	1250
Business Sedan	1990	Chassis, No. 4	1230
Coupe	1675	One Ton Truck	1916
Screen Body Bus	1425	1½ Ton Truck	2050

These prices are delivered at Campbellton.
All Taxes Paid.



DODGE BROTHERS ROADSTER

SPECIFICATIONS

ENGINE—N. A. C. C. Rating, 34 H. P. 2-point suspension, unit power plant.
4-cylinder 12" bore, cylinders cast in block.
LUBRICATION—Engine by pump and splash, scotchless pump, driven by spiral gears from crankshaft. Chassis by high pressure grease gun.
COOLING—Water, circulated by centrifugal pump. Tubular radiator. Fan driven by belt.
CARBURETOR—Special design, automatic air valve type.
FUEL SYSTEM—Vacuum feed. Fuel tank, at rear, capacity 15 gallons.
IGNITION—Distributor, automatic and manual spark control.
STARTER—12-volt single unit, starter-generator, 12-volt storage battery.
CLUTCH—Dry multiple disc, compound lever, ball throw release mechanism.
TRANSMISSION—Selective sliding gear type, three speeds forward and one reverse. Two annular ball bearings and two roller bearings. All gears chrome vanadium steel, heat-treated and hardened.
REAR AXLE—Semi-floating spiral bevel gear type. Four bevel gear differential. Chrome vanadium steel gears, heat-treated and hardened.
SPRINGS—Chrome vanadium steel. Front semi-elliptic; rear, semi-elliptic; under-slung.
STEERING GEAR—Chrome vanadium steel worm and worm wheel.
CONTROL—Lever in centre of car mounted on transmission case. Control lever on ball pivot with locking device for each speed.
INSTRUMENT BOARD—50-mile speedometer, 100,000-mile odometer, oil pressure gauge, locking fuel and lighting switch, ammeter. Carburetor adjuster, horn, instrument board lamp with adjustable shade.
BODY—Touring car, five passengers.
WHEELBASE—116 inches.
WHEELS AND TIRES—Wood with steel felloes; tires, 32 x 4, Cord.
WINDSHIELD—Clear vision, ventilating type. Windshield cleaner.
EQUIPMENT—Electric horn, fogs, fogs, foot rest, fogs, brackets, tire pump, high pressure grease gun, jack, tool kit, tire carrier with demountable rim, rear signal light, transmission lock.
UPHOLSTERING—Leather, rear seat, back and sides removable.

SALESMAN WANTED

Representatives in every district to sell cars. Apply at once at
**DODGE SERVICE STATION
ROSEBERRY STREET
CAMPBELLTON.**

S. W. DIMOCK

Dealer for Restigouche County

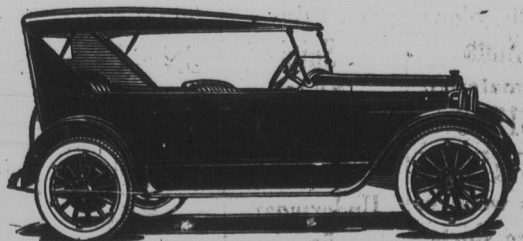
C. GORDON ANSLOW

Dealer for Bonaventure and Gaspé

FOR FURTHER INFORMATION

write or call at

**DODGE BROTHERS APPROVED
SERVICE STATION,
CAMPBELLTON.**



DODGE BROTHERS TOURING CAR

The appearance of Dodge Brothers car is enhanced by a lustrous finish of baked enamel, lasting through years of service. Only an all-metal body of high grade pressed steel lends itself to enameling process. This permanent lustrous finish is distinctly a Dodge Brother's feature.



DODGE BROTHERS BUSINESS COUPE

Please post up for further reference

The Best
CARS

"SA"

is rewarded
in North Am

Curre

Merchants and
equipped and
counts the eff
they demand
this Bank as
looked after

THE PROV
Campbellton

LOCAL

Newsy N
Happenings

FORMER CHIEF
OF NOVA
Wolville, N. S.
Charles Townsend, for
the of Nova Scotia, d
here this morning.

PIANO TU
Mr. Arch. McRae
Campbellton for the
expected to attend a
American during his
24.

ESCUIMAC CRUI
for Sunday 4
Escumac, P.E.I.
Pt. St. George, 7
Communion Service
at both churches
remembrance of life

STRAKER HI
Yesterday, after
heavily loaded, had
through the draw
Bridge (with the
brushed heavily ag
upon doing some
not enough to per
the draw-span and
traffic.

LOCAL GIB
graduation, diplo
Montreal General
Including among
St. George, Gaspé,
Currie, Campbell
M. Fraser, New C
Kelly, Stanley N.
Harbour, Buffett,
Morris, Lumbard
Stinson, Dumbart
N. B.

"BUY AT HOME

BACH
Hon. P. J. Ven
cation to the use
at Home and Ma
signs, states that
use of the money
things should ha
ago.

The Premier's
reply to a comm
attention to the
getting that the
Government give
din to all thing
ufacture. Hon.
to state that for
years it has bee
Government to
of local manuf
principles of her
continued.

It Pa