

CENTRAL GARAGE

Ford Runabout, nearly new, \$360.
CENTRAL GARAGE,
76-78 York Street. Phone 4304
ywt.

TIRES! TIRES! TIRES!
If you want tires and tubes that are made good and make good, see us at once. We have the largest stock in Western Ontario.
CANADA AUTO DEVICES CO.
Opposite Armouries.
330 Dundas Street. Phone 3876.
ywt.

**Chalmers Motor Company
of Canada Working
On Full Schedule**

Output of 2,000 Cars Is Planned for First Year—Will Take Care of Business in Canada, Great Britain and Foreign Trade.

With the formal opening of the plant of the Chalmers Motor Company of Canada, Limited, located at Walkerville, Ont., Canadian motor car owners will have access to one of the most popular makes of cars without paying excessive import duty.

According to Harry S. Lee, general manager of the concern, the Canadian Company is an entirely separate unit, building a car made up as far as possible of Canadian products.

"We intend to give the Canadian purchaser full value for his money, without any addition in price for duty, except that charged on materials which

are of necessity purchased outside of Canada," said Mr. Lee. "The Chalmers Motor Company of Canada, Limited, is capitalized for one million dollars, and will build approximately 2,000 cars during the first year. The plant occupies four acres of ground, and we have provided also to take care of future extension. The main building has 36,000 square feet of manufacturing and office space. A modern powerhouse and storage house complete the present buildings. Excellent shipping facilities have been obtained by securing our own siding and loading platform.

"In addition to caring for the Canadian trade, all Chalmers cars for England or British possessions will be manufactured and shipped from the Walkerville plant."

Due to the establishment of the Chalmers Motor Company of Canada, Limited, prices of Chalmers cars will not be affected by the recent price raises made in the American line, and it is expected that when production gets under way that they will be able to announce future models at prices much lower than if the cars were imported from the United States. For 1917 the Chalmers Six-30, with the famous 3,400 R. P. M. motor, will be manufactured in two lengths of wheel base. The five-passenger model will come in 115-inch wheel base, the new seven-passenger Six-30 on the 123-inch wheel base, also the cabriolet three-passenger and roadster. And in addition there will be several attractive closed body types for town driving in bad weather.

All of the officers of the Chalmers Motor Company of Canada, Limited, are men well known to the Canadian trade.

Harry S. Lee, general manager, was formerly general manager for the Toledo Scale Company in Canada.

Louis Logie, sales manager, formerly occupied the same position with the Tudhope Motor Car Company of Canada.

Working with Mr. Logie as eastern and western sales representatives are R. C. Miquelon and E. J. Parker, who will spend much of their time in the territory.

Hugh W. Buchanan, in charge of production, was formerly connected with the Buick Company.

Mossom I. Reid, who will have charge of Chalmers service in Canada, was formerly connected with the Tudhope Motor Company.

**HELPFUL POINTERS
ON MAINTENANCE
AND REPAIR**

Very few people know how to adjust the spark plug points. Nine times out of ten the points are separated too far. Most everyone carries with him an ordinary visiting card. The spark gap should equal the thickness of such a card.

When a motor knocks it means that something is wrong. Wherever there is a rattle something is loose which ought to be tight. And remember that lubricants are of vital importance. It is very difficult to get too much oil in the crankcase. Here you should keep sufficient oil, but not an over-amount. If you do happen to get too much oil in the crankcase the spark plugs will foul and you will have trouble with missing cylinders.

No part of the car is more responsible for your safety than the steering gear, steering connections, etc. Never allow any rattling to get into these parts, for such rattling is a sure

SAXON "SIX"

A big touring car for five people

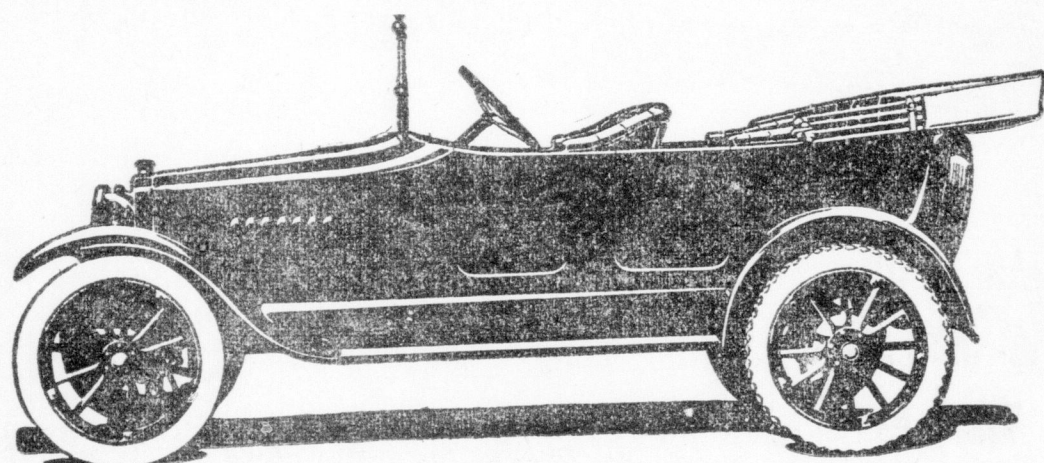
This car has come to be commonly regarded as an exceptionally easy-riding car. While this is partly due to the wide, comfortable seats and deep, restful upholstery, the chief reason lies in the fine, long, vanadium steel cantilever springs that turn the roughest going into velvety travel.

In feature after feature throughout Saxon "Six" you will find the same fastidious attention to detail that is characteristic of the costly cars. And even the outward appearance of this car reveals the added care and finer skill that have been put into its construction. Saxon "Six" costs \$1,115 f. o. b. Windsor.

London Motor Sales Co., Limited

187-189 KING ST., LONDON.

PHONE 3479.



PAIGE

The Standard of Value and Quality

WE might attempt to enumerate and describe to you all the many features that have been combined in the New Series Fairfield "Six-46" to make it the last word in elegant and luxurious motoring.

But we should prefer to have you make your own examination. You know, perhaps, of the power, buoyancy and perfect control of the motor—supreme among the Sixes for gentlemen's driving.

But we want you to see for yourself what we have added. We want you to see the new beauty of the car, the new refinements of all the little things and big things that count, the still greater comfort, elegance and luxury of a car already acknowledged leader of the "Sixes."

We want you to come and satisfy yourself that our claim and the public's award "the most completely equipped motor car that can be purchased on the American market—absolutely irrespective of price"—is accurate and well merited. Make your own comparisons. Arrive at your own conclusions.

Just come and see this sumptuous motor car.

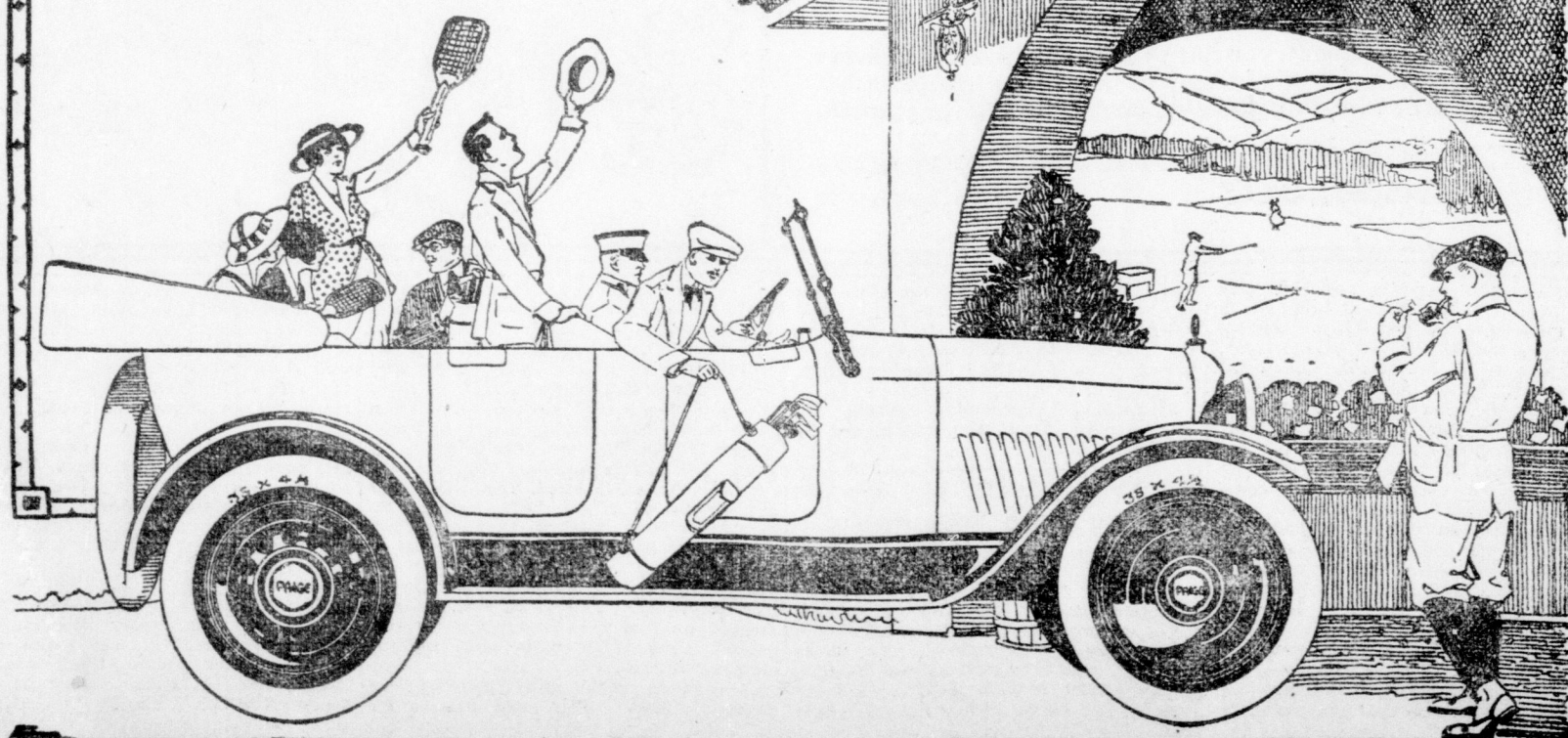
NEW SERIES FAIRFIELD "SIX-46" SEVEN-PASSENGER
\$2,075 f. o. b., London.

NEW SERIES FLEETWOOD "SIX-38" FIVE-PASSENGER
\$1,550 f. o. b., London.

PAIGE-DETROIT MOTOR CAR COMPANY
Detroit, Michigan.

LOCAL DISTRIBUTORS:

Bindner & Morrison
152-4 Fullarton Street. Phone 3475.



Overland

Talk of Value! Read these Wires!

"Consider new series model 75 B the most flexible, powerful, easiest riding car in the world today."

"Believe the new series 75 B greatest motor car value on earth."

"No four-cylinder motor of its size has as much 'pep,' regardless of price."

"Its hill climbing ability makes one sit up and take notice."

"I consider the new 75 B the best car value ever offered the American people."

"In sand and heavy roads this new car is a wonder. It rides like a rocking chair."

"This model is unquestionably the biggest buy, regardless of price."

"From the standpoint of specifications, equipment, finish, and from

an economical point of view, the new 75 B is a world beater."

"New 75 is a bird. Climbed 2,000 feet in seven miles on high at 25 miles an hour. That is going some."

"If I paid several times the price of a new 75 B my satisfaction could not have been more complete."

"The greatest buy on the automobile counter."

These telegrams with thousands of others are on file at our factory. Names on request. Come in and see some more records like these.

This new Overland is the world's most powerful and most economical low priced car. See it at once.

Western Ontario Motor Sales Limited,

YORK ST., (OLD CENTRAL GARAGE PREMISES.)

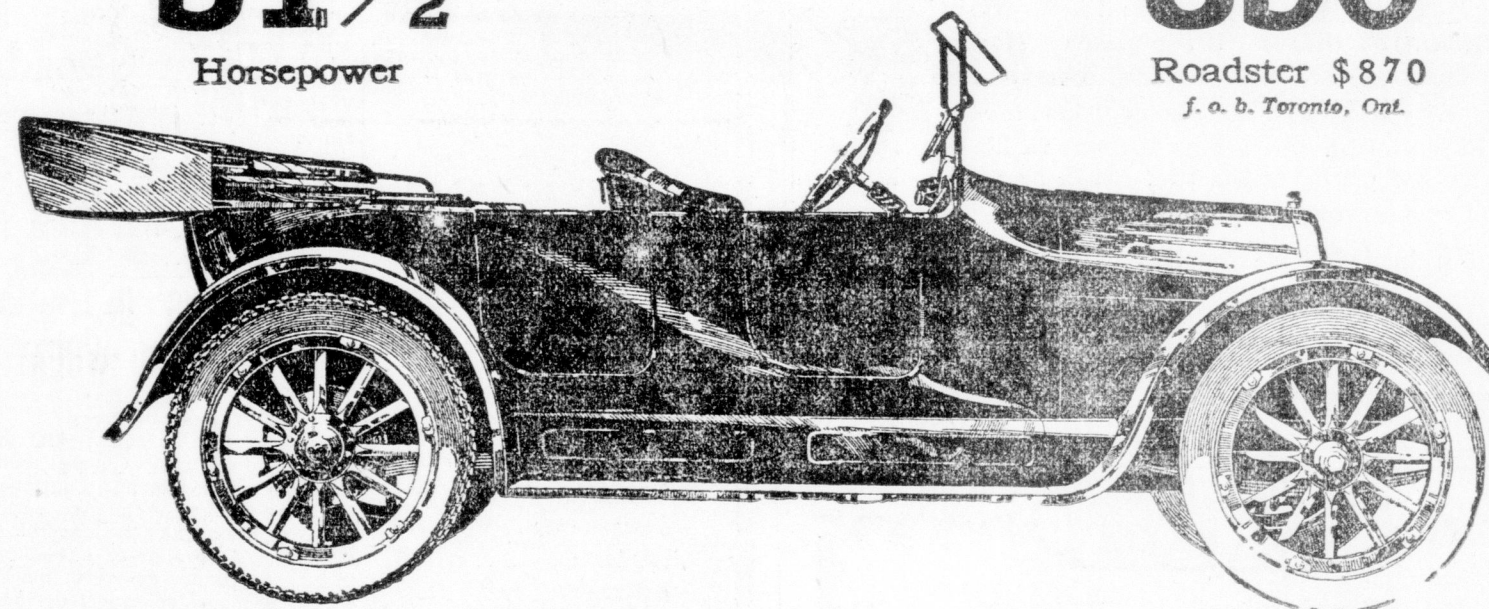
PHONE 4304

Willys-Overland, Limited

Head Office and Works, West Toronto, Ont.

31 1/2
Horsepower

\$890
Roadster \$870
f. o. b. Toronto, Ont.



sign of looseness in the connections to have been established beyond doubt. One instance which has come to the writer's attention is that of a large automobile factory in which it was at one time a practice to draw gasoline into a portable tank, which was allowed to rest during the filling process on a wooden box. The funnel used between the nozzle and the portable tank was not in contact with the discharge nozzle of the pump during the filling operation, but was close enough to it for a spark to jump from the charge accumulated on the funnel and portable tank had become of sufficiently high potential. Two

When a gasoline feed pipe is looped or otherwise bent in order to avoid the rigidity and liability to breakage of a straight pipe, air locks and consequent interruptions of the flow of fuel are likely to occur after filling the tank, unless sufficient gasoline is poured in to produce the pressure required to drive out the air that will be trapped if the loop or bend is made in a vertical plane. If the loop is turned so as to lie horizontal, however, there will be no such trouble. Incidentally, a complete loop in the best safeguard against breakage of the pipe.

ALWAYS GROUND

Continued From Page Nine.

when filling a gasoline tank it is simply necessary to 'ground' that is, connect with the earth, the funnel or nozzle on the surface of which the charge is apt to accumulate. As a rule the most, if not all, danger can be averted by simply keeping the funnel or filling nozzle in metal contact with the tank being filled.

When the funnel or nozzle is grounded, as, for example, by connecting either to some metal object, such as a pipe running into the earth, this allows the charge to pass through the conductor and into the earth without the production of any spark.

Thus, for example, if a wire-wound hose be used and this wire be connected at one end to the discharge nozzle, and at the other end to the metal fitting attaching the hose to the pump or its delivery pipe, no charge will result, for the pump itself is grounded. If a funnel and canolis are used while filling a tank, the gasoline being delivered through a hose nozzle, the tank of the car and the funnel should be kept in metallic contact, and so should the hose nozzle and the funnel.

No Danger if Care Is Exercised.
Many fires have occurred as results of sparks caused as above, this seems

fires resulted before the cause of the phenomenon was discovered.

"All danger may be avoided if care be taken to see that all metal parts of the filling system, as well as the tank being filled, are properly grounded or that the metallic vessels or other parts through which, or into which, the gasoline is passing are held in metallic contact during the filling operation."

Outing hats for early wear embody many attractive features, one in particular being the introduction of leather as trimming. In addition to its use for crowns and brims, One Milan

tan straw derby has a brim of bronze leather. A brown straw tricorn has a crown of the bronze leather and a white bally hoozie straw hat in Panama shape is trimmed with blue leather. One hat, made of rose raffia, has fastened at one side a blue scarf veil to be worn around the neck.

A motor will throttle better at low speeds if the spark plugs are kept in proper condition. The points of the plugs burn away gradually, and if not inspected and adjusted frequently misfiring will result.

New Plant of Chalmers Motor Co., Limited, of Canada, Located at Walkerville



Insets show the general manager, Harry S. Lee, and Louis Logie, sales manager.