

LOW COST OF HAULAGE—

A Storage Battery Locomotive will allow of a larger ore output, reduce labor haulage expense, relieves congestion, and is thoroughly reliable and practical.

Made in standard stock sizes, 500-2,400 lbs. D. B. P., larger sizes, special orders, and in all gauges to standard. Being equipped with EDISON Batteries ensuring long life and low maintenance.

LET US GIVE YOU A PROPOSITION

POWLEY & TOWNSLEY

907 Excelsior Life Building - - - TORONTO

Industrial Transportation Specialists

C. L. CONSTANT CO.,

42 New Street

New York

SHIPPERS' AGENTS

FOR

**Selling, Sampling and Assaying Ore,
Metals and Furnace Products**

Entire charge taken of shipments from the receipt of bill
of lading to the collection of smelter's return

NOT CONNECTED WITH ANY SMELTER

Canadian Representative:

G. C. BATEMAN

Traders Bank Building, Toronto

The University of Toronto

and University College

with which are federated

VICTORIA

TRINITY

ST. MICHAELS

KNOX and WYCLIFFE COLLEGES

FACULTIES OF

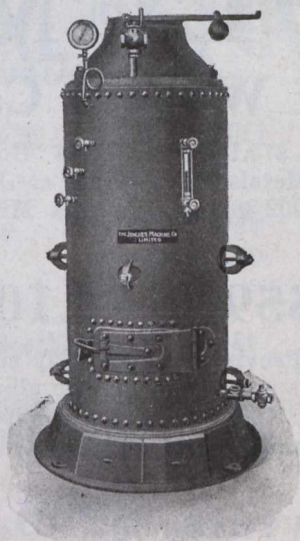
Arts, Applied Science, Music, Medicine
Education, Household Science, Forestry

For further information apply to the Registrar of the
University or to the Secretaries of the respective faculties.

BOILERS

Horizontal
Tubular
Vertical
Tubular
Locomotive
Types

Ore Cars
Ore Buckets
Steel Tanks
Steel Plate
Work



35 years of "Made in Canada" experience. Try us. We make good.

ENGINEERING & MACHINE WORKS OF CANADA, LIMITED

ST. CATHARINES, : ONTARIO

Eastern Sales Office:

Hall Machinery Co., Sherbrooke, Que.

MANGANESE STEEL CASTINGS

FOR

All Kinds of MINING MACHINERY,
CRUSHER JAWS, HAMMERS AND
HAMMER TIPS, LINERS FOR
CYCLONE BEATERS
BUCKET TIPS, STAMPS AND DIES,
DREDGER POINTS

Mild Steel Castings for all purposes

Electric Process—therefore the BEST

Our Special Quality "HYMANG"
BALLS FOR BALL MILLS RE-
DUCE COST OF ORE PER TON
CRUSHED

CANADIAN BRAKESHOE CO., LIMITED
SHEBROOKE, QUEBEC