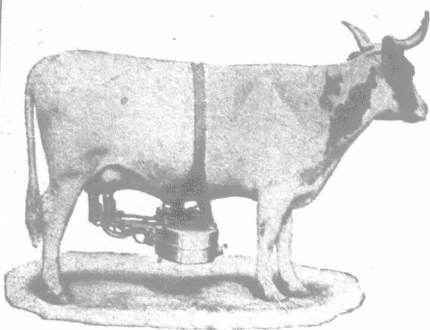


## OMEGA Milking Machines



### Care of Milking Machines

Excerpts from an article in the "Implement News".

"One of the most important needs of users of milking machines is that of quick cleaning. It should be done properly at the proper time. The machines should never be allowed to stand until the casein hardens on the rubber tubes or cups".

### Omega has NO RUBBER TUBES

Short transparent celluloid tubes take the place of long rubber ones. They do not decay or harbor germs, and are easily and quickly cleaned. This is an exclusive OMEGA feature; another is that the pail and milking parts are suspended from the cow's back, and the teat-cups cannot fall to the floor and suck up filth.

### WRITE TO-DAY

for illustrated booklet describing the many exclusive features of the OMEGA.

C. Richardson & Co.

St. Mary's - - Ontario

## Real Milk

Ottawa has set the lead among our Canadian cities in demanding milk for its people that shall be up to a certain standard of food value. Is your herd measuring up to this standard to-day? High-testing, Ayrshire blood will do it.

For information write:

The Canadian Ayrshire Breeders' Association  
W. F. Stephen, Sec., Huntingdon, Que.

## 15 95 AMERICAN CREAM SEPARATOR

Sent on trial. Fully guaranteed. Easy running, easily cleaned. Skims warm or cold milk. Bowl a sanitary separator. Shipments direct from Winnipeg, Toronto and St. John. Whether large or small dairy, write for handsome catalogue. Address:

American Separator Co., Box 5,200, Bainbridge, N.Y.

## Harab-Davies Fertilizers

Write for Booklet.  
THE ONTARIO FERTILIZERS, LTD.  
West Toronto

## CHURCH BELLS

CHIMES AND PEALS

MEMORIAL BELLS A SPECIALTY

FULLY WARRANTED

McSHANE BELL FOUNDRY CO.,

BALTIMORE, Md., U. S. A.

Chicago Office: Room 84, 154 W. Randolph St.

Established 1856

**Glencairn Ayrshires** Herd established 40 years. Producing ability from 8,600 to 11,022 lbs. If that sort of production appeals to you, we have heifers all ages and young bulls for sale. Thos. J. McCormick, Rockton, Ont. Copetown Sta., G.T.R.

## Choice Offering in Ayrshires

at Special Prices—Several young bulls of serviceable ages. All from R.O.P. sires and dams. Come and see them. Jno. A. Morrison, Mt. Elgin, Ont.

**JERSEY BULLS.** For sale—Knoolwood's Raleigh, sire Fairy Glen's Raleigh (imp.), 22 daughters R. O. P.; dam Eminent Honeymoon (imp.) R. O. P. 596 lbs. butter; reserve champion on island. Capt. Raleigh ready for service, sire Knoolwood's Raleigh, dam Mabel's Post Snowdrop; first as calf, 1914, first Junior Champion, 1915, 2nd 1916, Toronto. Milked 38 lbs. day, 6 per cent. milk, first calf. Ira Nichols, Burgessville, Ont. R.R. No. 2.

## Questions and Answers. Miscellaneous.

### Size of Silo.

1. Is a silo a profitable thing on a good grain-growing farm where there are milk cows?

2. What size would a silo need to be to hold enough feed for 12 head of milk cows for seven months' feeding?

3. How many acres of corn would it take for same?

4. How much lumber would it take and what size and length? D. H.

Ans.—1. Few stockmen who have silos would care to be without them, and the fact that many are building the second one is evidence that they are a satisfactory method of conserving feed. Silos are particularly valuable to dairy-men.

2. A silo 12 by 35 feet will hold ample feed for a herd of the size mentioned.

3. The acreage will depend entirely on the crop. It will take about 8 acres of a 10-ton-to-the-acre crop.

4. It will require about 1,300 feet of lumber. It is advisable to use 2-inch tongued and grooved plank. These would have to be bevelled in order that they fit in a circle. Sometimes two 18-foot lengths are used, or three 12-foot lengths. This gives a silo 36 feet high.

### Ophthalmia—Leucorrhœa.

1. My horses have some eye trouble. At first the eyes seem weak and they keep them partly shut. Sometimes they run water and a scum comes over them. One horse went blind; another has a scum on the eyeball and another one keeps its eyes partly shut.

2. A valuable cow has had leucorrhœa for some time and is very thin. She is on pasture and eats well, but is hide-bound. Kindly prescribe remedy.

### SUBSCRIBER.

Ans.—1. Symptoms are those of periodic ophthalmia, a constitutional disease which appears periodically without apparent cause, and a few attacks frequently result in blindness. Administer a laxative as 1½ pints of raw linseed oil. Keep in a comfortable stall excluded from drafts and direct sunlight. If possible partially darken the stall. Make a lotion of 10 grains sulphate of zinc, 20 drops fluid extract belladonna, and 2 ounces distilled water. Bathe the eyes three times daily with hot water, and after bathing put a few drops of the lotion into each eye. Recovery is slow, patience and continued treatment are necessary.

2. Leucorrhœa is a chronic disease of the womb difficult to treat, and it is generally advisable to get a veterinarian. However, if you decide to treat it yourself flush the womb out with a two-per-cent. solution of Zenoleum or phenyl heated to about 100 degrees F., and inject about two gallons into the organ with an injection pump. Feed well and give a tonic of one dram each of sulphate of iron, gentian and nuxvomica three times daily. It may take some time to effect a cure.

### Veterinary.

#### Chorea.

Pup four months old has some nerve disease which causes him pain and uneasiness. When lying the muscles of one front leg twitch all the time, and when he rises he will not use the leg for a while. C. L. H.

Ans.—This is a form of chorea, probably a sequel to distemper. Give him a laxative of a tablespoonful of syrup of buckthorn, and repeat the dose when necessary; also give him 2 grains of bromide of potassium three times daily. Cases of this nature are very hard to treat successfully. V.

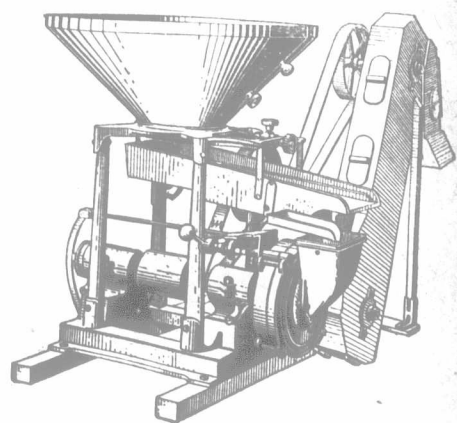
#### Sore Feet.

Cow seems to suffer in her legs. She changes the position of her feet frequently, and her back is becoming arched, as she keeps her hind feet forward under her body. N. L. K.

Ans.—The symptoms indicate foul in the feet. Keep her well bedded and in a perfectly dry stall. Clean out well between the clouts and apply poultices of hot linseed meal. Change poultices twice daily and keep warm by adding hot water as required. When the acute soreness is allayed cease poulticing and if there be any raw surfaces dress three times daily until healed with 1 part carbolic acid to 30 parts sweet oil. V.

## McCormick

## Look For the "SV"



THE highest of all compliments is being paid to Vessot grinding plates—imitations are now being offered for sale. We appreciate the compliment, however, more than our customers will appreciate the imitation plates. Therefore, to protect our customers as well as ourselves, we have arranged to mark every genuine Vessot grinding plate with the raised letters, "SV" showing plainly in the face of the plate, near the center. It will, therefore, be easy for you, hereafter, to identify any plate offered to you for use in your Vessot feed grinder. Look for the "SV." If it's there, you are buying a plate guaranteed as fully as your grinder was guaranteed when you bought it. We cannot stand behind the performance of Vessot grinders unless genuine Vessot plates are used.

Another point—even the genuine Vessot plate will do better work and give better service when driven by the steady power of a Mogul engine. If it should happen that you are not fully informed on the advantages of the Vessot feed grinder, with its two sieve spout and grinding plates so good they are imitated, and with the kerosene-burning feature of the Mogul engine, see the McCormick local agent, or write to us at the nearest branch house. It will pay you.

International Harvester Company of Canada, Ltd.

### BRANCH HOUSES

At Brandon, Calgary, Edmonton, Estevan, Hamilton, Lethbridge, London, Montreal, N. Battleford, Ottawa, Quebec, Regina, Saskatoon, St. John, Winnipeg, Yorkton

## — Money Makes Money

Don't keep that few hundred dollars on "check" in an account earning no interest, or only a paltry 3%.

Invest it in a 5% Mortgage Debenture of the Standard Reliance Mortgage Corporation.

Thousands of farmers and townspeople are holders of our Debentures.

And never a cent of their money has been lost.

A \$1,000 Debenture at 5% for five years pays \$280 in interest, or 28% gain. It is one of the safest, if not the safest, investment, for never a dollar has been lost in Ontario Mortgage Debentures.

Wouldn't you like to invest your money to earn equal profits? Alright then—write for our booklet, about Profits from Savings. It tells you how to get 5% for your savings instead of 3%. Address Dept.: 9



STANDARD RELIANCE MORTGAGE CORPORATION

Head Office 82-88 King St. E. Toronto

Branches: Ayr, Brockville, Chatham, Elmira, New Hamburg

## YOUNG Brampton Jerseys BULLS

For the next fortnight we are making a special offering on young bulls, bred from the highest producing families ever introduced into Canada. Brampton Jerseys and their descendants hold all Jersey R.O.P. records save one. Females, all ages, also for sale. B. H. BULL & SON, Brampton, Ont.

THE WOODVIEW FARM JERSEYS LONDON, ONTARIO Jno. Pringle, Prop.

Canada's Most Beautiful Jersey Herd

Present Offering—Some high-class bull calves ready for service, from Record of Performance dams, including grand champion bull at last Western Fair and his full brother; also cows and heifers. State distinctly what is wanted, if writing. We work our show cows and show our work cows



**Glenhurst Ayrshires** For 50 years I have been breeding the great Fias tribe of Ayrshires, dozens of them have been 60-lb. cows; I have lots of them get 60 lbs. a day on twice-a-day milking. Young bulls, 1 to 10 months of age, females all ages. If this kind of production appeals to you, write me.

James Benning, Williamstown, Ont.