

# The Canadian Bridge Co., Limited

WALKERVILLE, ONT.

MANUFACTURERS OF  
**RAILWAY AND HIGHWAY BRIDGES**

Locomotive Turn Tables,  
Roofs, Steel Buildings and  
Structural Iron Work of all descriptions

**C. J. FENSOM, B. A. Sc.**  
CONSULTING ENGINEER

Aberdeen Chambers - Toronto

Machinery designed, supervised,  
inspected and contracted for.

TESTS — REPORTS  
Electric Light Plants, Power Plants,  
Pumping Plants.

## PILE . . . DRIVING

On land and water by steam.  
Pile drivers or drop hammers.  
Dams, wharves, bridge building  
trestle work and general contract-  
ing.

Submarine diving and all kinds  
of submarine work.



We have always a stock in hand to  
let of:

Diving Outfits, Portable Boil-  
ers, Hoisting and Pumping  
Machinery, Etc.

**WM. HOOD & SON**  
10 Richmond Sq. - MONTREAL

**The Ontario Accident  
Insurance Co.**

ACCIDENT, EMPLOYERS, ELEVATOR  
AND GENERAL LIABILITY . . . .

104 St. Francois Xavier St. Montreal

**RAILS** For Contractors, Switches, Gir-  
ders, &c.  
**LOCOMOTIVES AND CARS**  
New and Second Hand.

**John J. Gartshore**

83 Front St. West,

(Opposite Queen's Hotel.) **TORONTO**

## ELECTRICITY

If you desire to keep posted on  
the wonderful progress that is  
taking place in the use of elec-  
tricity for an almost endless var-  
iety of purposes, you should sub-  
scribe to the

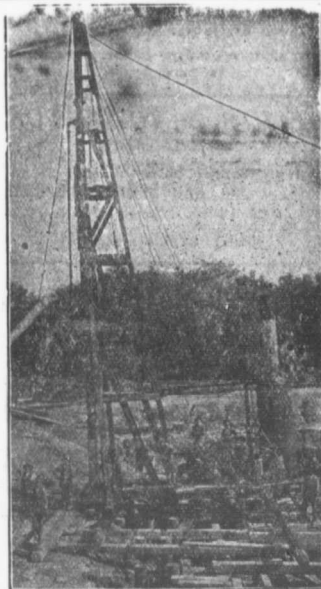
**Canadian Electrical News**  
and Engineering Journal

A 44 PAGE MONTHLY,  
PRICE \$1 PER YEAR

Write for free sample copy to

**The G. H. Mortimer Publishing Co.**  
LIMITED

Toronto Montreal Winnipeg Vancouver



## PILE DRIVING

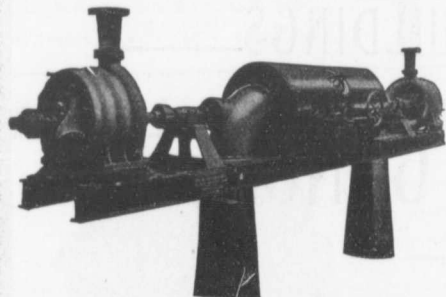
and Foundation Work.

By 5-ton Automatic Steam Pile Hammer  
Water Jet or Drop Hammers, Dock Build-  
ing, Submarine Work and Dredging.

**BUILDING MOVER AND WRECKER**  
General Contracting.

**JNO. E. RUSSELL, - Toronto**  
Residence, 1010 Queen St. E.—Phone M. 466  
Office and yard 307 Logan Ave.—Phone M. 2007

# PUMPS FOR WATER WORKS



## WATER WORKS SYSTEMS INSTALLED

Boilers, (Return Tube and Water  
Tube,) Tanks, Penstocks,  
Mill Machinery.

Builders in Canada of

**"WORTHINGTON" TURBINE PUMPS**

Two Worthington 3-Stage Turbine and McCormack  
Water Wheels, built for Port Arthur, Ont., Water  
Works, 1440 gal. per minute against 350 ft. head.

**The John McDougall Caledonian Iron Works Co.,**  
Estimates Cheerfully Furnished **Montreal.** **Limited.**