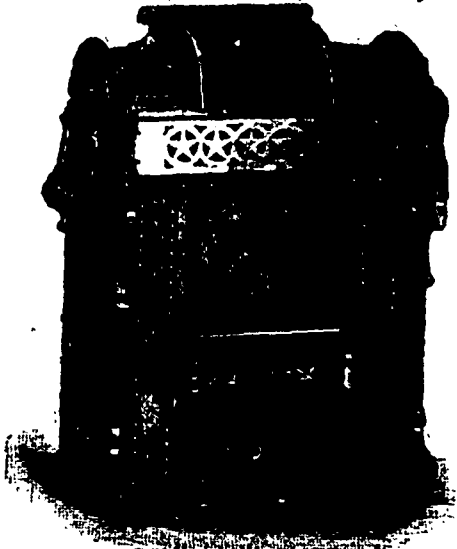


# MUSIC HATH CHARMS!



SOLE AGENT FOR THE DOMINION.

ESTABLISHED 1868.

THERE SHOULD BE IN  
**EVERY HOUSE**  
 AND  
**PUBLIC HALL**  
 ONE OF THOSE  
**Self-Playing Parlour Organs**  
 CALLED THE "ORCHESTRONE."

Music specially prepared for Lodge Work, Churches and  
 Popular Entertainments.

SEND FOR CATALOGUES, PRICES, ETC., TO

**THOS. CLAXTON,**  
**MUSIC DEALER,**  
 197 YONGE STREET, TORONTO.

## Black Diamond Steel



THE VERY FINEST STEEL

### For Miners' Use

Will hold a Good Edge and Save Money  
 in Blacksmithing.

### LARGE STOCK

Always kept at our MONTREAL BRANCH  
 HOUSE, or can be delivered promptly from  
 Works at Pittsburg. Address

**PARK, BROTHER & CO.,**  
 LIMITED,  
 377 ST. PAUL STREET,  
 MONTREAL.

### The Canada Co.

Will issue Licences to Prospect or  
 to work Minerals on any of  
 their Mining Lands and  
 Mineral Reservations,

Covering nearly a

### Quarter of a Million Acres

In Eastern Ontario, and principally  
 within the belts containing

Iron, Phosphate, Gold, Galena,  
 Plumbago, Mica, Marbles,  
 Building Stone,  
 and other valuable Minerals.

For list of lands and terms apply to the  
 Company's Mining Inspectors,

H. T. STRICKLAND,  
 Peterborough, Ont.,

For lands in the County of Hastings and  
 westward, and to

ANDREW BELL, P.L.S.,  
 Almonte, Ont.,

For lands East of the County of Hastings.

### TO MINERS AND OTHERS.

### Bannerman & Powers,

### VULCAN BOILER WORKS,

428 and 340 Wellington St., Ottawa.

MANUFACTURERS OF

### IRON AND STEEL BOILERS

OF EVERY DESCRIPTION.

Tanks, Girders, Iron Roof-  
 ing, Bank Vaults, Smoke  
 Stacks

—AND ALL KINDS OF—

### SHEET IRON WORK.

Repairs Neatly and Promptly Executed

88, 90, 92, 94 Rideau, 15 to 23 Mosgrove  
 and 186 Sparks Sts.

### S. & H. BORBRIDGE,

Manufacturers of

Saddles, Harness, Trunks, Valises, Bags,  
 Satchels, Horse-Blankets, Beef and Oil-  
 Tanned Moccasins.

OTTAWA.

### Robert R. Hedley,

Analytical Chemist and Assayer.

Sudbury - - Ontario.

Mr. Hedley is prepared for all Mineralogical  
 Analyses, guarantees prompt work and accurate  
 returns, with reasonable charges.

Will examine Lots and Mineral  
 Properties.



### THE INTERCOLONIAL RAILWAY OF CANADA.

DIRECT ROUTE BETWEEN THE WEST

—AND—

All points on the Lower St. Lawrence and Baie  
 des Chaleux, Province of Quebec; also, for New  
 Brunswick, Nova Scotia, Prince Edward and Cape  
 Breton Islands, Newfoundland and St. Pierre.

All the popular Summer Sea Bathing and Fishing  
 resorts of Canada are along this line.

New and Elegant Buffet Sleeping and Day cars  
 run on through express trains between Montreal,  
 Halifax and St. John.

### CANADIAN EUROPEAN MAIL AND PASSENGER ROUTE.

Passengers for Great Britain or the Continent  
 leaving Thursday morning will join Outward Mail  
 Steamer at Rimouski the same evening.

The attention of Shippers is directed to the  
 superior facilities offered by this Route for trans-  
 port of flour and general merchandise intended for  
 the Eastern Provinces and Newfoundland, also for  
 shipments of grain and Produce intended for the  
 European market.

Tickets may be obtained and all information  
 about the route, Freight and Passenger rates on  
 application to

E. KING,  
 27 Sparks Street,  
 OTTAWA.

D. POTTINGER,  
 Chief Superintendent.  
 Railway Offices, Moncton, N.B.  
 23th May, 1882.

## Queen City Galvanizing Works,

SOLE MANUFACTURERS IN CANADA OF



### WALTER'S

PATENT

### Metallic Shingle

—AND—

### SIDING PLATES.

Fire and Storm Proof. Easily ap-  
 plied. Make the handsomest roof known  
 and give double the service of the same  
 material put on by any other method.  
 Send for particulars.

## Thomas McDonald & Co.,

69 to 75 Sherbourne St., Toronto, Ont.

### PORTABLE ENGINES & SAW-MILLS

Of all capacities—from 3000 feet of lumber and up per day.

Saw-Mills.

Shingle-Mills.

Lath-Mills.

Chopping-Mills.

Send for Circulars, stating  
 what you require.

ENGINES

OF ALL SIZES.

BOILERS

of all capacities.

IRON OR STEEL,

ALL STYLES.



**Waterous Engine Works Co.** Brantford, Canada.  
 St. Paul, Minn., U.S.A.