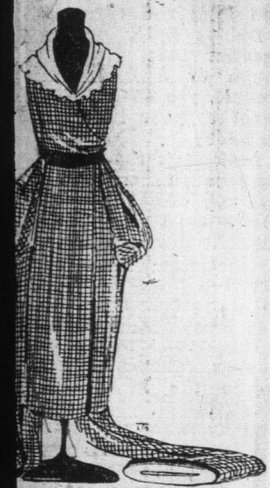


Fabrics



LADIES' HOSE.

wearing Hose for Fall wear, in Black Wool, with garter, some with hem at top; Hosiery that will satisfy in wear. These offering at an unusually low Sale Price, **37c**

GIRLS' HOSE.

Light Hose, in a weight for present wear. Close-knit, throughout, fine, made from fine yarns, soft and un-bleached, to fit girls age 6 to 12 years. Sale Price, **43c** per pair

KEEPING SUITS.

Line of Children's Suits, to fit children and 8 years; these are made and well made. Little ones during these months by buying a suit of this Price, per **77c**

TEAM FLETTE.

Now we always give ex-cesses in these goods. Get a well finished hat will give com-plete service and defy the cold in winter; is 30 and would be good. 50c. per yard. **20c**

WOMEN'S SWEATERS.

Now we always give ex-cesses in these goods. Get a well finished hat will give com-plete service and defy the cold in winter; is 30 and would be good. 50c. per yard. **20c**

Feathers.

Feathers which had its New Year at the Astor Theatre. City, is a big play, but of life. The play is power-ful and interesting, en-joyable, and the author has same power for sketch-ing details of a life by the narrow circumstances so the first act of "Paid in Full" is a young dramatist have reached the heights of veneration. Mr. Walter has a play and has had the drive home with a straight line simple theme that "The man are death." From the title hat of a miserable the Staten Island wife, paid 22.00 that young woman's seek husband had given her her's bill, down to the husband, who has condoned act, is the abyss of hu-manity that is bridged in "Fine The incident of the hat is laughable at the beginning it is laughable at, but with less advance of a destiny has given an object lesson Mrs. Reynolds is depicted a woman, yet so wanting of common honesty as to be anything wrong in the al. That lack of common a natural desire for hers, work together to be her husband who loved her say no to her. It is a fine feminine psychology. A stirring drama, tense, grim,

PTIVE PATIENT—A Miss Bay St. George, arrived evening to enter the hospi-tal.

CHAINS.—Keep your skidding by using the Feed Chains. All sizes BOWRING BROTH-ers, Hardware Depart-ment, 18, 19, 20, 21, 22, 23, 24, 25, 26, 27, 28, 29, 30, 31, 32, 33, 34, 35, 36, 37, 38, 39, 40, 41, 42, 43, 44, 45, 46, 47, 48, 49, 50, 51, 52, 53, 54, 55, 56, 57, 58, 59, 60, 61, 62, 63, 64, 65, 66, 67, 68, 69, 70, 71, 72, 73, 74, 75, 76, 77, 78, 79, 80, 81, 82, 83, 84, 85, 86, 87, 88, 89, 90, 91, 92, 93, 94, 95, 96, 97, 98, 99, 100, 101, 102, 103, 104, 105, 106, 107, 108, 109, 110, 111, 112, 113, 114, 115, 116, 117, 118, 119, 120, 121, 122, 123, 124, 125, 126, 127, 128, 129, 130, 131, 132, 133, 134, 135, 136, 137, 138, 139, 140, 141, 142, 143, 144, 145, 146, 147, 148, 149, 150, 151, 152, 153, 154, 155, 156, 157, 158, 159, 160, 161, 162, 163, 164, 165, 166, 167, 168, 169, 170, 171, 172, 173, 174, 175, 176, 177, 178, 179, 180, 181, 182, 183, 184, 185, 186, 187, 188, 189, 190, 191, 192, 193, 194, 195, 196, 197, 198, 199, 200, 201, 202, 203, 204, 205, 206, 207, 208, 209, 210, 211, 212, 213, 214, 215, 216, 217, 218, 219, 220, 221, 222, 223, 224, 225, 226, 227, 228, 229, 230, 231, 232, 233, 234, 235, 236, 237, 238, 239, 240, 241, 242, 243, 244, 245, 246, 247, 248, 249, 250, 251, 252, 253, 254, 255, 256, 257, 258, 259, 260, 261, 262, 263, 264, 265, 266, 267, 268, 269, 270, 271, 272, 273, 274, 275, 276, 277, 278, 279, 280, 281, 282, 283, 284, 285, 286, 287, 288, 289, 290, 291, 292, 293, 294, 295, 296, 297, 298, 299, 300, 301, 302, 303, 304, 305, 306, 307, 308, 309, 310, 311, 312, 313, 314, 315, 316, 317, 318, 319, 320, 321, 322, 323, 324, 325, 326, 327, 328, 329, 330, 331, 332, 333, 334, 335, 336, 337, 338, 339, 340, 341, 342, 343, 344, 345, 346, 347, 348, 349, 350, 351, 352, 353, 354, 355, 356, 357, 358, 359, 360, 361, 362, 363, 364, 365, 366, 367, 368, 369, 370, 371, 372, 373, 374, 375, 376, 377, 378, 379, 380, 381, 382, 383, 384, 385, 386, 387, 388, 389, 390, 391, 392, 393, 394, 395, 396, 397, 398, 399, 400, 401, 402, 403, 404, 405, 406, 407, 408, 409, 410, 411, 412, 413, 414, 415, 416, 417, 418, 419, 420, 421, 422, 423, 424, 425, 426, 427, 428, 429, 430, 431, 432, 433, 434, 435, 436, 437, 438, 439, 440, 441, 442, 443, 444, 445, 446, 447, 448, 449, 450, 451, 452, 453, 454, 455, 456, 457, 458, 459, 460, 461, 462, 463, 464, 465, 466, 467, 468, 469, 470, 471, 472, 473, 474, 475, 476, 477, 478, 479, 480, 481, 482, 483, 484, 485, 486, 487, 488, 489, 490, 491, 492, 493, 494, 495, 496, 497, 498, 499, 500, 501, 502, 503, 504, 505, 506, 507, 508, 509, 510, 511, 512, 513, 514, 515, 516, 517, 518, 519, 520, 521, 522, 523, 524, 525, 526, 527, 528, 529, 530, 531, 532, 533, 534, 535, 536, 537, 538, 539, 540, 541, 542, 543, 544, 545, 546, 547, 548, 549, 550, 551, 552, 553, 554, 555, 556, 557, 558, 559, 560, 561, 562, 563, 564, 565, 566, 567, 568, 569, 570, 571, 572, 573, 574, 575, 576, 577, 578, 579, 580, 581, 582, 583, 584, 585, 586, 587, 588, 589, 590, 591, 592, 593, 594, 595, 596, 597, 598, 599, 600, 601, 602, 603, 604, 605, 606, 607, 608, 609, 610, 611, 612, 613, 614, 615, 616, 617, 618, 619, 620, 621, 622, 623, 624, 625, 626, 627, 628, 629, 630, 631, 632, 633, 634, 635, 636, 637, 638, 639, 640, 641, 642, 643, 644, 645, 646, 647, 648, 649, 650, 651, 652, 653, 654, 655, 656, 657, 658, 659, 660, 661, 662, 663, 664, 665, 666, 667, 668, 669, 670, 671, 672, 673, 674, 675, 676, 677, 678, 679, 680, 681, 682, 683, 684, 685, 686, 687, 688, 689, 690, 691, 692, 693, 694, 695, 696, 697, 698, 699, 700, 701, 702, 703, 704, 705, 706, 707, 708, 709, 710, 711, 712, 713, 714, 715, 716, 717, 718, 719, 720, 721, 722, 723, 724, 725, 726, 727, 728, 729, 730, 731, 732, 733, 734, 735, 736, 737, 738, 739, 740, 741, 742, 743, 744, 745, 746, 747, 748, 749, 750, 751, 752, 753, 754, 755, 756, 757, 758, 759, 760, 761, 762, 763, 764, 765, 766, 767, 768, 769, 770, 771, 772, 773, 774, 775, 776, 777, 778, 779, 780, 781, 782, 783, 784, 785, 786, 787, 788, 789, 790, 791, 792, 793, 794, 795, 796, 797, 798, 799, 800, 801, 802, 803, 804, 805, 806, 807, 808, 809, 810, 811, 812, 813, 814, 815, 816, 817, 818, 819, 820, 821, 822, 823, 824, 825, 826, 827, 828, 829, 830, 831, 832, 833, 834, 835, 836, 837, 838, 839, 840, 841, 842, 843, 844, 845, 846, 847, 848, 849, 850, 851, 852, 853, 854, 855, 856, 857, 858, 859, 860, 861, 862, 863, 864, 865, 866, 867, 868, 869, 870, 871, 872, 873, 874, 875, 876, 877, 878, 879, 880, 881, 882, 883, 884, 885, 886, 887, 888, 889, 890, 891, 892, 893, 894, 895, 896, 897, 898, 899, 900, 901, 902, 903, 904, 905, 906, 907, 908, 909, 910, 911, 912, 913, 914, 915, 916, 917, 918, 919, 920, 921, 922, 923, 924, 925, 926, 927, 928, 929, 930, 931, 932, 933, 934, 935, 936, 937, 938, 939, 940, 941, 942, 943, 944, 945, 946, 947, 948, 949, 950, 951, 952, 953, 954, 955, 956, 957, 958, 959, 960, 961, 962, 963, 964, 965, 966, 967, 968, 969, 970, 971, 972, 973, 974, 975, 976, 977, 978, 979, 980, 981, 982, 983, 984, 985, 986, 987, 988, 989, 990, 991, 992, 993, 994, 995, 996, 997, 998, 999, 1000

ANOTHER FULL PAGE of MONEY-SAVING OPPORTUNITIES



New Fall Headwear at Bargain Prices.

WOMEN'S UNTRIMMED HATS.
Becoming Fall Hats, of very fine felt, in shades of Nigger, Mole, V Rose, Wine, Tan, Saxe and Navy. They come in a popular broad sail-or style with wide rim that is strongly finished at the edge. A smart neat hat that is very desirable for Fall and Winter wear. Regular \$1.75 each. **Friday and Saturday \$1.45**

MISSSES' FELT HATS.

One of the prettiest styles shown this season for Misses' wear. The front is slightly turned down, and a ro-sette of corded silk ribbon is prominently displayed at the front of crown; colors: Navy, Black, Fawn and Brown. Reg. \$2.25 each. **Friday and Saturday \$1.80**

FOR FRIDAY and SATURDAY.

If Price Inducements can do it, Friday & Saturday will be busy days here.

Hundreds of Customers visited this Store last Friday and Saturday. All were unanimous in saying that our prices were the lowest in the city. This week we offer the same high qualities at the same low prices—in some cases lower.

Come and see what we have to offer you.

Coat and Costume Materials.

NEW IMPORTATIONS.

SCARLET COATING.

When you look at this goods you will at once realize that you are being offered a rare bargain; it is a splendid Box Cloth in a good heavy weight and is an old value; 54 inches wide. Reg. \$3.00 yd. **Friday and Saturday \$2.65**

BLACK ASTRACHAN.

A good wearing material for Coats, Caps, Mitts or Collars, has a nice curl and a good weight; 50 inches wide. Reg. \$1.00 yd. **Friday and Saturday 75c**

TWEED SUITINGS.

One of the most stylish fabrics shown to-day; a beautiful quality in a perfect weave that tailors delightfully. They come in checks and plain shades; 54 inches wide. Regular \$2.85 yd. **Friday and Saturday \$2.35**

BLOUSE FLANNELETTE.

This is a nice soft Blouse Flannelette, colorings of which are exceptionally fine. We advise those anticipating buying Blouse Flannelette to avail themselves of this bar-gain. Special for Friday and Sat-urday, per yard **22c**

Crockeryware.

White Stone Pudding Bowls. Reg. 20c. each for **18c**.
Cut Glass Water Jugs. Reg. 55c. each for **50c**.
Japanese China Mustard Pots. Reg. 20c. each for **18c**.
Fancy Stone Water Jugs. Reg. 45c. each for **40c**.
Clarke's Pyramid Candles. Reg. 35c. box for **32c**.
Holy Water Fountains. Reg. 45c. each for **40c**.
Printed Stone Porridge Plates. Reg. 12c. ea.; 3 for **33c**.
Glass Molasses Jugs, with tin covers. Reg. 22c. ea. for **20c**.
White and Gold Egg Frames, 3 cup size. Reg. 35c. for **30c**.
Stone Vases. Reg. 20c. each for **16c**.

Smallwares.

Bel Bon Talcum Powder. Reg. 8c. tin for **7c**.
Royal Vinolia Talcum Powder. Reg. 25c. tin for **21c**.
Standard Writing Pads. Reg. 13c. each for **10c**.
Carter's Fountain Pen Ink. Reg. 13c. each for **12c**.
Charlie Chaplin Dolls. Reg. 25c. each for **20c**.
Tennis Bats. Reg. 20c. each for **16c**.
Fancy Dress Pins. Reg. 15c. pair for **12c**.
Blouse Pins, sets of 5. Reg. 8c. set for **6c**.
Colored Cotton. Reg. 2c. reel; 3 reels for **4c**.
Photo Frames. Reg. 20c. each for **16c**.

Showroom Bargains.

Lines for which Fashion has expressed a preference.

CHILDREN'S BONNETS.

Cosy as can be these care-fully made bonnets of Velvet, finish-ed in front with ruffled silk and rosettes; a little band of imitation Ermine passes through openings at the top and gives it a touch of daintiness. Reg. \$1.45 each. **Fri. and Saturday \$1.25**

CHILDREN'S IMITATION FUR SETS.—Stoles and Collars in various shapes, with head clips for fastening, and pillow shaped Muffs. Good quality imitation fur in Grey and White and Fawn and White, well finished and lined with White Twilled Satin. This is a splendid saving chance that will attract many buyers. Reg. \$1.50 set. **Friday and Saturday \$1.30**

NECK SCARVES.—Beautiful Scarves of Artificial Silk and Cotton, with deep silk fringe at both ends; fashionable, bright shades of Pink, Saxe, Pale Blue, Grey, also Black, White and Cream. Reg. 30c. each. **Friday & Sat'y 24c**

WOMEN'S COLLARS.—Of fine Muslin and soft Jap. Silk. The very newest sailor shapes, some with the popular pointed corners. Reg. 40c. ea. **Friday & Sat'y 33c**

WOMEN'S CORSETS.—The very newest styles in Women's D. and A. Corsets of very fine White Cotton, in a variety of mod-els to suit almost any figure. They are trimmed at top with fancy trimming, well boned, and fitted with four strong hose supporters; sizes 20 to 30. Reg. \$2.40 pair. **Friday and Saturday \$2.00**



COTTON BLANKETS.

Grey and White with Blue or Pink strip-ed borders and plain White in a good heavy quality that will prove serviceable and give great wear. Considering the quality these Blankets are remarkably cheap at the regular price of \$2.50 pair. **Special for Friday and Sat'y. \$2.30**

PILLOW CASES.

Of soft, firm finish Pillow Cotton that's pure and free from dressing. They are made with a 3 inch hemstitched hem and finished with beautifully embroidered cor-ners. The low price quoted below should prove specially inducing for these good quality Pillow Cases. Size 18 x 28 inches. Regular 45c. each. **Friday and Saturday 36c**

MONEY-SAVING NEWS ON HOUSEHOLD NECESSITIES.

It is one proposition to save money on luxuries and an entirely differ-ent one to save on necessities. These offers concern necessities. You will soon realize that for day-in and day-out necessities our values are supreme.

WHITE BED SPREADS.

These are special bargains that our buyer snapped up at a low price. They are offered to you this week at a greater saving. There are American Crochet Quilts in double bed size, with hemmed ends and fringed honeycomb. Regular \$2.00 each. **Friday and Saturday \$1.70**

SHEETING.

Pure White, Plain and Twilled Sheeting, 68, 78 and 80 inches wide. Better values than these we have not shown for some time; they are fairly close qualities and good wearers. Reg. 65c. yd. **Friday and Saturday 59c**

TEA CLOTHS.

Full bleached tea cloths of fine Irish manufacture, in floral and silk scroll designs. A row of hem-stitching gives a neat finish to this serviceable tea cloth which is of good quality damask; size 43 x 43 in-ches. Reg. \$1.45 each. **Friday and Saturday \$1.20**

Sideboard Cloths

Lace and insertion trimmed, and embrod-ered with openworked ends and wide hem. Two popular sizes, 13 1/2 x 67 and 13 x 54 inches. These Cloths are made of fine select-ed English Cotton, close and soft, and will not shrink in the washing. Reg. 55c. each. **Friday and Saturday 45c**

Hearth Rugs.

4 dozen only Stand-ard qualities English made Hearth Rugs; Fawns, Reds, Greens and Browns in floral and Oriental designs; size 27 x 54 inches; fringed ends. Reg. \$3.90 each. **Friday & Sat. \$3.70**

CUSHION COVERS.

Serviceable Cushion Covers of fawn crash with edge of colored cord and silk embroidered centres in hand-some floral and scroll designs; also Tapestry in a hard wearing, fadeless quality with cord edge and colored Satin back. Reg. 75c. each. **Friday and Saturday 75c**

DUCHESSE SETS.

Of fine Cotton with hem and openwork centres; in sets of four pieces. The runner measures 11 x 40 inches. Reg. 45c. each. **Friday and Saturday 38c**

TURKISH TOWELS.

A very attractive as-sortment of Turkish Towels in stripes and plain white with fringed and hemmed ends. The materials are very soft and free from dressing of any kind. They come in a popu-lar size for general use being 32 inches long and 18 inches wide. Reg. 25c. each. **Friday & Sat. 21c**

TOWELS.

A very attractive as-sortment of Turkish Towels in stripes and plain white with fringed and hemmed ends. The materials are very soft and free from dressing of any kind. They come in a popu-lar size for general use being 32 inches long and 18 inches wide. Reg. 25c. each. **Friday & Sat. 21c**

FURNISHINGS FOR MEN. Values that Maintain Our Reputation for Moderate Prices.

MEN'S SHIRTS.

Fine quality Negligee Shirts, made coat style, soft double cuffs attached, full yoke, double stitched seams. Comes in neat assorted Fawn, Black or Blue stripes. Sizes 14 to 17. Will give excellent wear. Reg. \$1.50 each. **Friday and Saturday \$1.25**

MEN'S "JOB" COLLARS.

Assorted qualities, in a vari-ety of popular styles. Collars that sold regularly at 18 and 20 cents each. All sizes from 12 1/2 to 18, but not all sizes in any one line. Special for **Friday and Saturday 15c**

BOYS' SWEATER COATS.

Made from a good weight Cotton and Wool yarn that will stand hard wear. Two pockets, close ribbed front and cuffs. Sizes 30, 32 and 34. Reg. values to \$1.40 each. **Friday and Saturday \$1.10**

MEN'S SOFT HATS.

Made from good felt, in the new popular style, with slight-ly turned brim and band to match; finished with leather sweat. This is a well propor-tioned hat, and is becoming in-creasingly popular. Colors: Brown, Green and Grey. Reg. \$1.25 each. **Friday and Saturday \$1.00**

MEN'S BOOTS.

Black and Tan Knu Krome, a stout wet-resisting leather that will give great service. If oiled and cared for will prove extra durable and most satis-factory. Reg. \$5 pr. **Friday & Saturday \$4.60**

MEN'S MOOSE CALF BOOTS

Warm boot for cold weather with heavy viscolated soles; neat Blucher shapes in Tan only with perforated self tip. Reg. \$5.35 pair. **Friday and Saturday \$5.40**

MEN'S HANDKERCHIEFS.

Made from soft White Cam-bric with borders in fancy de-signs and colors, the predom-inating shades being Khaki, Blue and Black. Size 17 x 17 inches. Reg. 17c. each. **Friday and Saturday 14c**

NAVY NAP CLOTH.

A good heavy weight, in fact one of the best nap cloths we have ever stocked. We recom-mend it without any hesitation as a good value. Navy only 56 inches wide. Reg. \$6.20 yd. **Friday and Sat. \$5.50**

MEN'S TIES.

A pleasing variety; made in the newest wide end, shield knot or derby shape of a good quality neckwear material of artificial silk and cotton mixed. They come in a choice assort-ment of up-to-date patterns and colors. Reg. 25c. each. **Friday and Saturday 20c**

BOYS' WINTER WEIGHT UNDERWEAR.

Made from a fine quality union yarn, neat, close fitting cuffs and ankles. A suit that will wash and wear well. Sizes 24 to 32. Reg. to \$1.00 garment. **Friday & Sat'y 85c**



FANCY ART SILKS.