

Hitchin, Sussex, England. The upper three-fourths consist of deer horn, into which a deep hole has been worked from the under side, forming a socket in which there is fixed a small stone celt, identical in form with many that are found in this country. The handle, to the left, has almost wholly decayed, leaving only what is shown in the cut, unless indeed we regard the implement as a chisel, in which case the upper end would have been the part held in the hand. This specimen is from a lake-dwelling in Switzerland, and is introduced merely for comparison with our own.

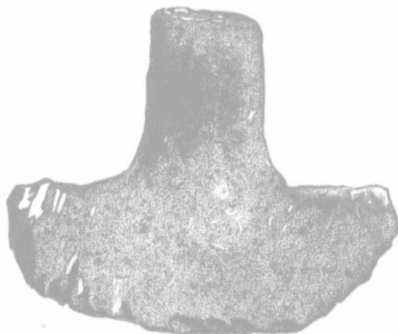


FIG. 43.

Fig. 43 has evidently been employed as a cutting tool, the neck having been fixed in a socket or otherwise fastened to a handle. The type is of very rare occurrence in America. Many European collections contain highly finished symmetrical specimens. This one is from the County of Middlesex (where it was found by Mr. Delaney), and was procured from Mr. Matheson.

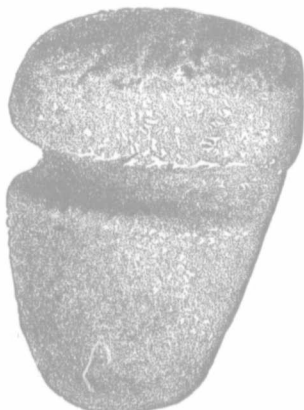


FIG. 44.

Grooved axes are rare in Ontario as compared with Ohio, Indiana, Kentucky and some neighboring States. In most cases also with us, the channel has been cut all the

way round
number of
been left
slightly f
tighten t
Fig. 44, i
Indiana,

Goug
specimen
be seen al
to the too
suppositio
It was fou
Collection

There
of skins.
grinding w
in carrying
interesting
Withrow A

A cons
collection d
are made of
commerce.
the other.
of these diff
at one end
tube is scarc
twice that.
throughout
end where t