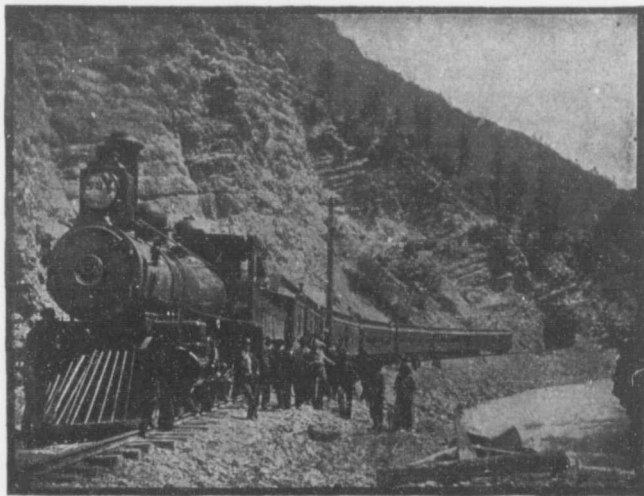


North and west, there is a large mica-bearing belt, but the expense of production, where everything has to be packed in or out on mules' backs, is too great to permit of its development. In addition to minerals, there are agricultural lands, some of which, however, are subject to overflow during high water.



KICKING HORSE CANON, C.P.R.

Revelstoke is a supply centre and divisional point. It spreads over a large area, for around the railway station a town has grown up a mile and a half away from the old town. Workshops for the Pacific Division of the railroad are here on a large scale. In them we see huge engines that have been smashed in snow-slide or in collision, awaiting repairs. From Revel-

**Railway  
Workshops.**