

We have pattern No. 9139 in ten sizes for ladies from thirty to forty-two inches, bust measure. For a lady of medium size, the waist will require two yards and a half of *drap d'été* forty inches wide, with a yard and five-eighths of silk twenty inches wide, and a fourth of a yard of chiffon forty-five inches wide. Price of pattern, 1s. 3d. or 30 cents.

FIGURE No. 229 W.—  
LADIES' TAILOR-  
MADE SUIT.

(For Illustration see  
Page 656.)

FIGURE No. 229 W.—  
—This consists of a Ladies' basque and skirt. The basque pattern, which is No. 9147 and costs 1s. 3d. or 30 cents, is in twelve sizes for ladies from thirty to forty-six inches, bust measure, and may be seen again on page 654. The skirt pattern, which is No. 9080 and costs 1s. 3d. or 30 cents, is in nine sizes for ladies from twenty to thirty-six inches, waist measure.

This typical tailor-made suit is of gray cloth; and the military decoration of black braid and olive buttons is in keeping with the style of the basque, which is known as the Lancer basque. Below the closing, which is made with hooks and loops, the fronts are nicely rounded off, and at the top they are reversed in small lapels by a rolling collar, a linen chemisette and a band-bow appearing in the opening. The sleeves have the correct amount of fullness at the top.

The skirt has five gores and may be gathered or side-plaited at the back, where it hangs in full folds, while the effect over the hips is entirely smooth, although no darts are introduced.

Plain cloth and all the mixed cloths, showing either gay or subdued coloring, may be chosen for the suit, and the chemisette may be of plain or fancy linen. The suit is so distinctly military in style that a tailor finish is most appropriate. On a toilette of mixed tau canvas a black braid decoration suggesting frogs may adorn the fronts. The sleeves may also be braid trimmed.

The fancy straw hat is adorned with flowers and ribbon.

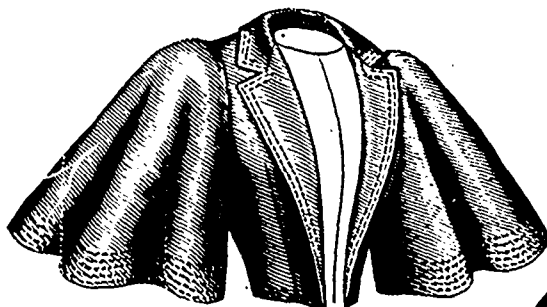
LADIES' BASQUE.  
(FOR MATERNITY  
AND INVALID WEAR.)

(For Illustrations  
see Page 667.)

No. 9148.—The basque is here pictured made of plain dress goods and silk with the vest of *mousseline de soie* and braiding and lace edging for decoration. The basque has loose lining fronts to which underfacings, that extend from the lower edges to the bust, are sewed to form casings for elastics which permit of an easy adjustment, capable of expanding and accommodating the needs of the figure. The vest is gathered at the neck, drawn in on elastics at the lower edge

and puffs out softly over a smooth, pointed girdle which crosses it at the bottom.

The jacket fronts are folded back in tapering lapels that form notches with the rolling collar and over the lapels roll narrow revers of silk that are decorated with braid, the style of the lapels and revers tending to give a long effect. Under-arm and side-back gores and a curving center seam complete the adjustment, and the back shapes a

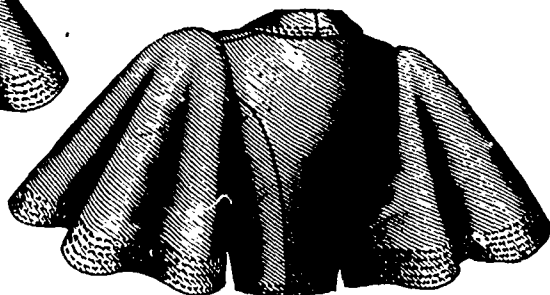


1339

Front View.

LADIES' ETON JACKET, WITH BELL SLEEVES.

(For Description see Page 648.)



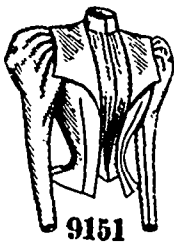
1339

Back View.

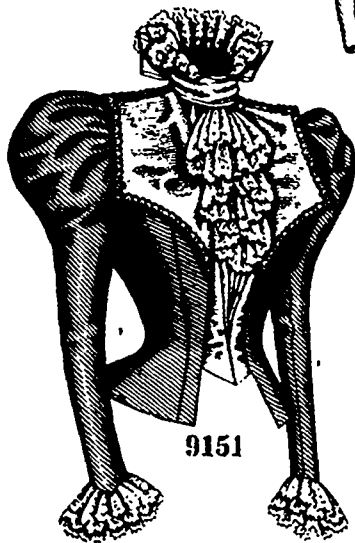
point at the center. The close two-seam sleeves are arranged over coat-shaped linings, and are gathered at the top and along the side edges of the upper portion to stand out in a short puff. At the wrist the sleeve may be plain or shaped in a Venetian point. The neck is completed with a standing collar, and a graduated lace frill.

The mode is favorable to a combination. A vest of some soft, yielding material like chiffon, mull or *mousseline de soie* may be associated with a basque of silk, alpaca, serge, cashmere, poplin or any one of many dress goods that are serviceable, pretty and inexpensive. A stylish basque of this character may be cut from brown canvas and white *crêpe de Chine*. Insertions of cream Valenciennes lace may be let in the vest and may also trim the revers and collar.

We have pattern No. 9148 in seven sizes for ladies from thirty to forty-two inches, bust measure. For a lady of medium size the basque calls for two yards and three-eighths of dress goods forty inches wide, with seven-eighths of a yard of silk twenty inches wide, and three-fourths of a yard of *mousseline de soie* forty-five inches wide. Price of pattern, 1s. 3d. or 30 cents.

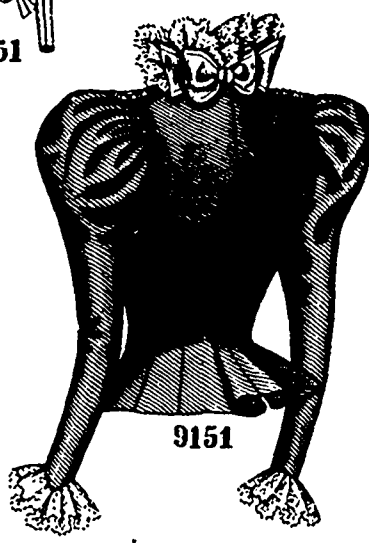


9151



9151

Front View.



9151

Back View.

LADIES' JACKET-BASQUE, WITH TWO UNDER-ARM GORES. (DESIRABLE FOR STOUT LADIES.)

(For Description see Page 648.)

LADIES' RUS-  
SIAN BASQUE-  
WAIST. (TO  
BE MADE WITH OR  
WITHOUT THE  
PEPLUM.) KNOWN  
AS THE ROMANOFF  
WAIST.

(For Illustrations  
see Page 637.)

No. 9101.—This stylish basque-waist is shown in a different development at figure No. 223 W in this magazine.

Maize silk is here illustrated in the basque-waist, which is fashionably known as the Romanoff waist, being in graceful Russian style. Under-arm gores and a lining fitted by

double bust darts and the usual seams give desirable trimness. The wide, seamless back is smooth at the top but has fullness