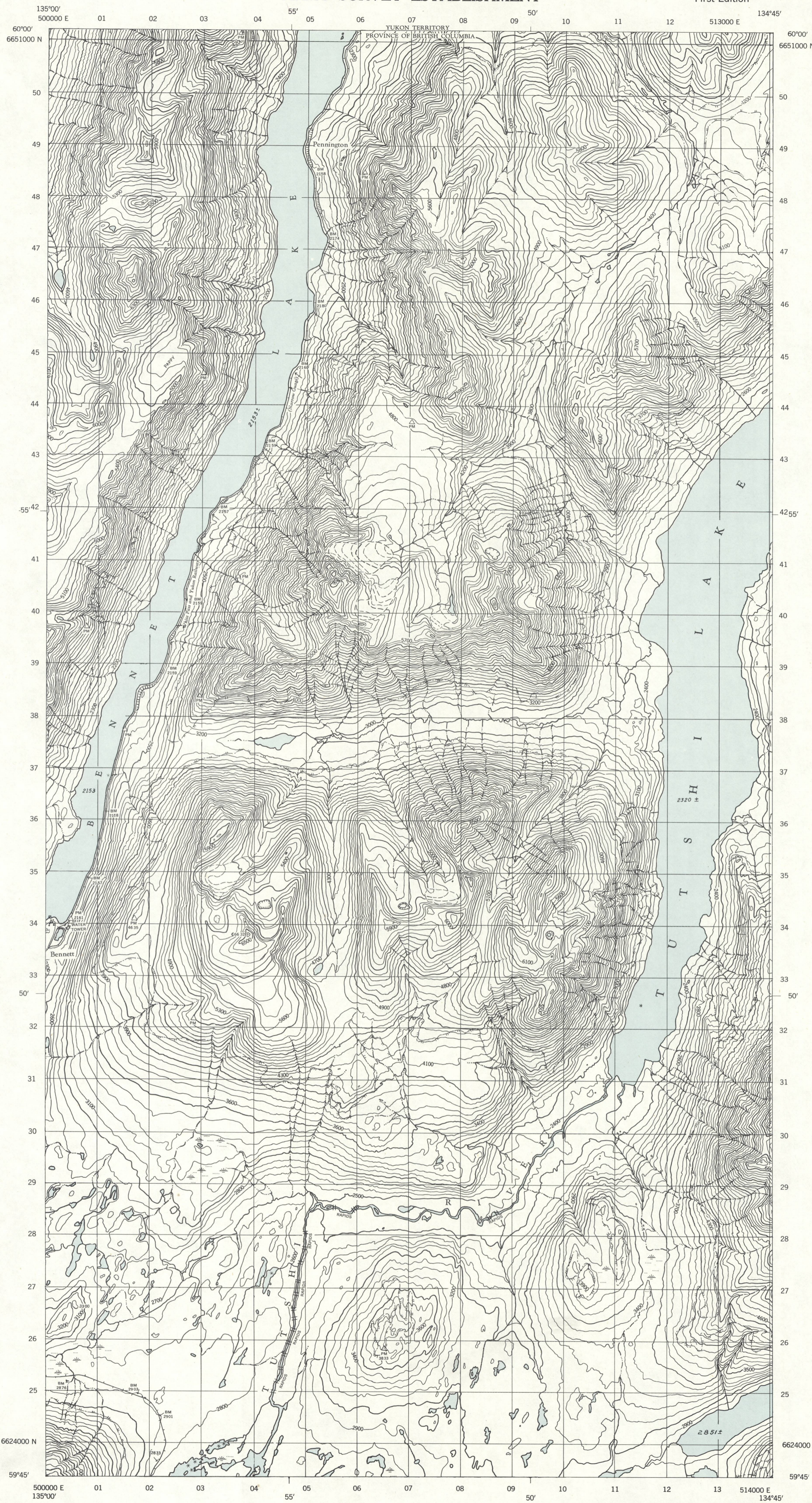


DEPARTMENT OF NATIONAL DEFENCE
ARMY SURVEY ESTABLISHMENT

First Edition

104 M/15 WEST



Produced By The Army Survey Establishment, R.C.E. 1957

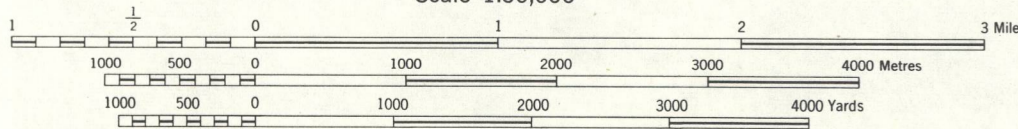
Users noting errors or omissions on this map are requested to mark hereon and forward to Commanding Officer, Army Survey Establishment, Ottawa. Maps will be replaced if desired

REFERENCE

Roads: hard surface, all weather hard surface, all weather loose surface, all weather " less than 3 lanes " less than 2 lanes	more than 3 lanes 3 lanes wide or less 2 lanes wide or more all weather all weather	Boundary, International Province County or District Township or Parish City or Town Reservation, Indian, Military, etc.	Power Transmission Line Horizontal Control Point Boundary Marker Rock Mark Spot Elevation, (in feet) Mine or Pit
Cart Track, Trail Railways: normal gauge, multiple track normal gauge, single track abandoned, or under construction narrow gauge, single track Bridge, viaduct or overpass Tunnel	Cart Track, Trail Station Normal gauge, multiple track Normal gauge, single track Abandoned, or under construction Narrow gauge, single track Bridge, viaduct or overpass Tunnel		

TUTSHI LAKE
BRITISH COLUMBIA

Scale 1:50,000



CONTOUR INTERVAL 100 FEET

PROVISIONAL MAP
Subject to Correction

REFERENCE

House, Building School Church " with conspicuous Tower or Spire Post Office Tower, Radio Mast, Lookout, etc. Rocky Ledge Sand or Gravel Pit Cliff Embankment Dry River Bed	Lighthouse Wharf or Pier Furber's Flats Swamp or Marsh Lake or Pond, intermittent Glacier or Snowfield Stream, intermittent, half-frozen Irrigation Canal, Ditcher Inundated Land, seasonal Contour, elevation depression Orchard Forest, undisturbed, Scrub
--	--

104 M/15 WEST

McGILL UNIVERSITY
MAP COLLECTION
SUPERSEDED
EDITION
GEOGRAPHY DEPARTMENT
MONTREAL