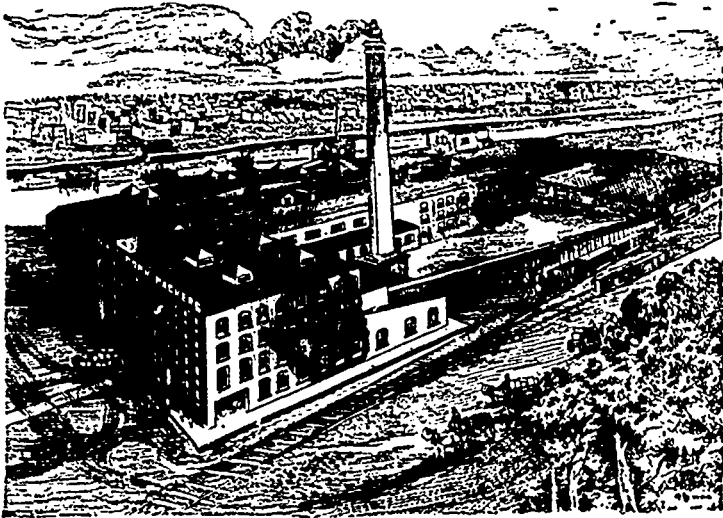


# GRIFFIN HAMS



ARE MADE FROM FINE, GRAIN FED HOGS. THE KIND THAT PRODUCE TENDER, JUICY HAMS. THEY ARE CURED AND SMOKED WITH PARTICULAR CARE IN ORDER TO PRODUCE THE FAMOUS GRIFFIN BRAND FLAVOR

**J. Y. GRIFFIN & CO.** Pork Packers  
WINNIPEG  
Branches-Vancouver and Nelson

## California Fruit Washington Fruit Ontario Fruit

**SCARCE AND HIGH AT ALL POINTS**

Preserving season will open next week when everything will be at bed rock.

We have two cars Ontario Fall Apples consisting of Alexanders, Duchess, St. Lawrence, due September 1st. Lose no time in ordering—Ontario Apple Crop huge failure.

**R. A. ROGERS & COMPANY Ltd.**  
WINNIPEG

### The Position of Opium.

Opium in the New York market is easier, and in some instances a shade lower. The situation is said to be due to lower cables from Smyrna and the usual competition between local dealers. As a matter of fact, however, the indications would seem to point to bearish tactics on the part of large handlers, and this idea is borne out to quite an extent by the fact that, until a market was sought for one or two outside lots within the past week or ten days, the feeling was firm; dealers reported business to be better than for a long time past. Quite a number of sales of case lots have been made lately, according to the reports of those who are now talking bearish, and co-incidentally with a sale of an outside lot of some twenty-five cases upon which the bond had expired at private terms, said to have been considerably below the present quotations, the market was reported to have weakened. So far as can be learned, no old opium has been reported sold at Smyrna at lower prices, and the lower figures reported in cable advices from primary markets are taken to refer to the new gum.—Oil, Paint and Drug Reporter.

### Whiskey Does Not Kill Bacteria

[Leslie's Weekly.]

One of the many absurd and injurious fallacies connected with the use of alcoholic stimulants has been, it may be hoped, effectually disposed of by the authoritative announcements of the most eminent English medical men. This particular fallacy is that cherished by many as to the efficacy of whiskey or brandy as a germ-killer when added to water supposed to be infected. The whiskey is assumed to sterilize the water and make it germ-free. This, it is declared, is absolutely untrue. Whiskey will do nothing of the kind. Some organisms will live in alcohol of nearly 75 per cent. strength, which is considerably over the strength of most spirits consumed. The common alcoholic strength of whiskey is about 40 per cent. of brandy 42 per cent., and of rum not usually more than 50 per cent. It is quite certain that microbes can live and thrive in the ordinary mixed-drink of whiskey and water, the average amount of alcohol in a tumblerful of whiskey-and-water, in the proportion usually adopted, being not more than 10 or 11 per cent. Bacteriological investigations have shown that most germs are not affected by a liquid containing 22 per cent. of alcohol, while their corresponding spores are unharmed in 33 per cent. alcohol. Alcoholic drinks, therefore, cannot be regarded as effectual destroyers of microbe life, and, further, bacteria, after a time, seem to get accustomed to alcohol and to become proof against any antiseptic action that it originally may have possessed. The use of alcoholic liquor as a germ-killer has no moral basis in scientific reason or in fact than the use of the same liquid as a protection against extreme heat or cold. It is a clearly established fact that for people suffering from extremes of temperature in either direction few things are more harmful than alcoholic stimulants.

F. D. ROE, President

R. ABERNETHY, Vice-President

T. F. PATERSON, Sec.-Treas.

The Canadian Pacific  
Lumber Company Limited



MANAGER

Manufacturers of and Wholesale Dealers in all Classes of British Columbia

**LUMBER, LATH,  
SHINGLES,  
MOULDINGS, Etc.**

PORT MOODY, B.C.

CAPACITY: LUMBER—60,000 feet per Day; LATH—20,000; SHINGLES—120,000.

We have the largest dry kiln capacity of any mill in B.C.; also the largest amount of sheds, and these are well stocked with Manitoba lumber. We have seven planers and are prepared to ship promptly. We understand the requirements of Manitoba dealers. Send to us for your next car. F. V. TOWN, Manitoba Salesman

It is about ten years since the bulk of the Prussian railways passed under government control. During the decade 1889-1899 the increase of business was as follows: Number of passengers, increase 135 per cent.; distance travelled over by passenger trains, 59 per cent.; passenger kilometres, 94 per cent.; receipts from passenger traffic, 70 per cent.—the discrepancy being due to reduction in fare-freight, ton-kilometres, 63 per cent.—reduction in rates representing a saving to shippers of 60,000,000 marks during the period; number of coal cars furnished in the Rheinisch-Westphalian district, 60 per cent.; increase of employees of all classes, 32 per cent.; increase in salaries and wages, 72 per cent. One hundred and forty-three million marks were expended on fourteen of the larger new station buildings, and the annual average for improvements of the roads, for new rolling stock, etc., is 73,500,000 marks. The rate of interest on the invested capital rose from 6.26 per cent. in 1889 to 7.28 per cent. in 1899, and the excess of receipts over expenditures from 1882 to 1900 amounted to 6,093 million marks.