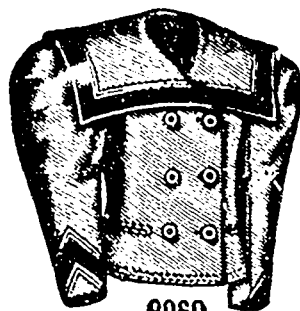


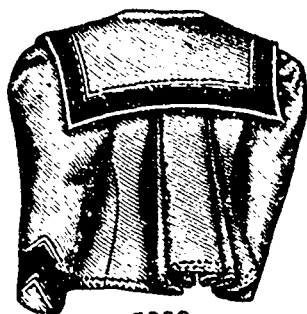
**GIRL'S EMPIRE JACKET OR REEFER, WITH DOUBLE BOX-PLAITED BACK EXTENDING FROM A YOKE.**

No. 9060.—A stylish little Empire jacket or reefer is here illustrated made of navy-blue broadcloth and trimmed with machine-stitching.



9060

Front View.



9060

Back View.

**GIRL'S EMPIRE JACKET OR REEFER, WITH DOUBLE BOX-PLAITED BACK EXTENDING FROM A YOKE.**

black-and-gold braid and gilt buttons. The upper part of the back is a square yoke, to which the lower part is joined after being laid in a wide rolling double box-pleat at the center. The jacket is conformed to the figure at the sides by under-



9083

Front View.



9083



9083

Back View.

**CHILD'S GRETCHEN COAT, WITH FANCY COLLAR.**

arm gores, and the loose reefer fronts are lapped and closed in double-breasted style. Openings to side pockets in the fronts are finished with stitching. The one-seam sleeves are gathered at the top. The neck is shaped slightly low in front and the sailor collar is curved at the lower edge and has wide ends lapped with the fronts.

Pattern No. 9060 is in 9 sizes for girls from 4 to 12 years of age. To make the jacket for a girl of 8 years, requires 2 3/4 yards of goods 27 inches wide. Price of pattern, 20 cents.

**CHILD'S GRETCHEN COAT, WITH FANCY COLLAR.**

No. 9083.—White cashmere was used for making the picturesque little Gretchen coat here illustrated, with white lace and ribbon for the decoration. The short, plain body is fitted by shoulder and under-arm seams and closed at the front. To its lower edge is joined a full skirt that is gathered at the top. An attractive accessory is a deep, fancy collar, that is shaped in odd points at the back and front and edged with a frill of wide lace. The neck is completed with a standing collar from which rises a graduated frill of lace; a folded ribbon is arranged about the standing collar and a ribbon bow is tacked to it at the back and

Pattern No. 9083 is in 6 sizes for children from 1 to 6 years old. For a child of 4 years, the coat requires 4 1/2 yards of goods 22 inches wide. Price of pattern, 20 cents.

**FIGURE No. 209 W.—MISSES' PARTY DRESS.**

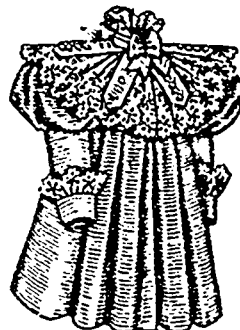
FIGURE No. 209 W.—This illustrates a Misses' dress. The pattern, which is No. 9082 and costs 30 cents, is in 7 sizes for misses from 10 to 16 years of age, and may be seen differently portrayed on page 236.

Plain and figured lawn are combined in this dress and ribbon lace edging and ruffles of the material supply decoration. The quaint Dutch



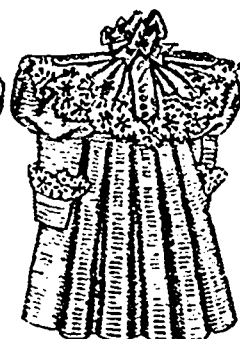
9085

waist has a center front of plain lawn extended across the back at the top to form a shallow yoke, the fulness being arranged in rows of tuck-shirtings about the neck. Over the side edges of the center front lap side-fronts that are separated from the full back by under-arm gores; and the back and side-fronts are turned



9085

Front View.



9085

Back View.

**CHILD'S LONG EMPIRE COAT, WITH FRILL COLLAR.**

under at the top and shirred to form a frill heading. The fulness in the waist is drawn well to the center of the front and to the closing by gathers at the lower edge. The fancy puff sleeves are finished with a frill of lace edging. A ribbon girdle surrounds the waist in upturned folds and is closed at the left side under a bow having long loops and ends.

The four-gored skirt is gathered at the back and the front and side gores are perfectly smooth at the top. The skirt is trimmed at the lower edge with lace-edge ruffles of the lawn.

**CHILD'S LONG EMPIRE COAT, WITH FRILL COLLAR.**

No. 9085.—By referring to figure No. 216 W on page 240 this coat may be again seen.

The pretty little Empire coat is here illustrated made of pink pique, with white embroidery for the frill collar and white ribbon, pearl buttons and white embroidery for decoration. The short body is fitted by shoulder and under-arm seams and is closed at the front with buttons and button-holes. Five box-plaits are arranged in the full skirt at the back and two similar plaits are laid near each front edge, and the skirt is gathered at the sides and joined to the body. Pointed straps ornamented with tiny buttons fall over the handsome frill collar, and a wrinkled ribbon covers the standing collar, from which rises a frill of ribbon that narrows toward the ends. A full ribbon bow is tacked to the standing collar at the back and front. Short puffs are arranged over the coat sleeves and round, upturning cuffs finish the sleeves.

Silk, pique, cashmere and cloth, with lace, embroidery, buttons and ribbon for trimming will give satisfactory results in making a coat like this.

Pattern No. 9085 is in 7 sizes for children from 1 1/2 to 6 years old. For a child of 4 years, the coat requires 3 3/4 yards of goods 22 inches wide, with 2 1/2 yards of edging 8 3/4 inches wide for the frill collar and 3/4 yard of ribbon 2 inches wide for the frill. Price of pattern, 20 cents.

**FIGURE No. 209 W.—This illustrates MISSES' PARTY DRESS.—The pattern is No. 9082, price 30 cents.**

front. A folded ribbon is also arranged down each front edge of the fancy collar and over its lower end is tacked a bow and long end of ribbon. The coat-shaped sleeves have puffs arranged over them at the top.