

Cariboo Gold Fields, at a cost of near half a million equip with ditch and pipe line giving 800 feet head to elevate by hydraulic elevator the gravel and water from bed-rock, a depth of ninety-six feet, and save the enormous deposit of gold that must have been carried to this natural sump hole by such rich creeks as Williams, McArthur and Jack of Clubs.

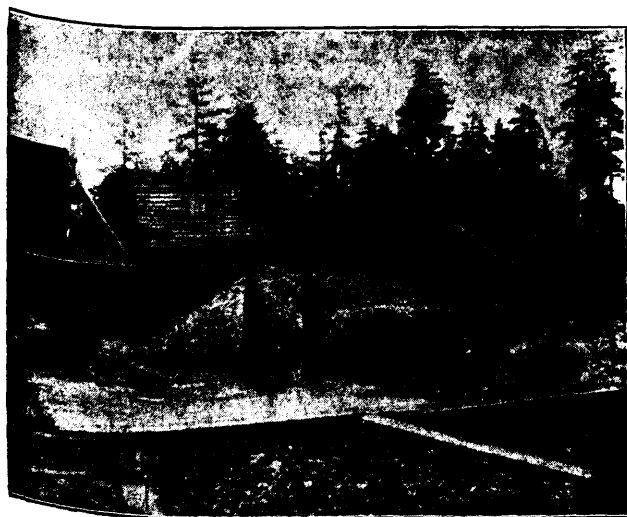
On Slough Creek was operating a Jet gravel drill, prospecting for the old channel and with such good results that the property has been bought at a good figure by an English company at the instance of Mr. Wm. Thompson, M.E., who spent the summer of '96 thereabouts. New mining on Willow River was also in the embryonic stage, and now I see that this property has also gone to English capitalists. Big Valley Creek was being prospected by Mr. Dunlevy, and this too has been sold to the Big Valley Gold Mines, Ltd. In short, everywhere we journeyed in the district, where prospecting was being carried on, a great change is now noticeable; the old slow ways are no longer satisfactory. Capital, machinery and science are pushing everywhere.

Down Lightning Creek we follow the road to Cottonwood, which has been taken up for dredging purposes; across the Cottonwood and on to the Fraser and Quesnelle mouth, when we are in a land of grist mills, pumpkin rollers and cow beasts again. Miles upon miles of the Fraser, Quesnelle and Cottonwood are taken up for dredging companies. People apparently continue to sink money in these dredging schemes although I have never heard of one paying anywhere in America. Down the Cariboo road again, but without many stops, for the season is growing late and we have struck a prospect in our wanderings and must pilot our "yellow-legs" back to look at it before snow flies.

G. O. L.

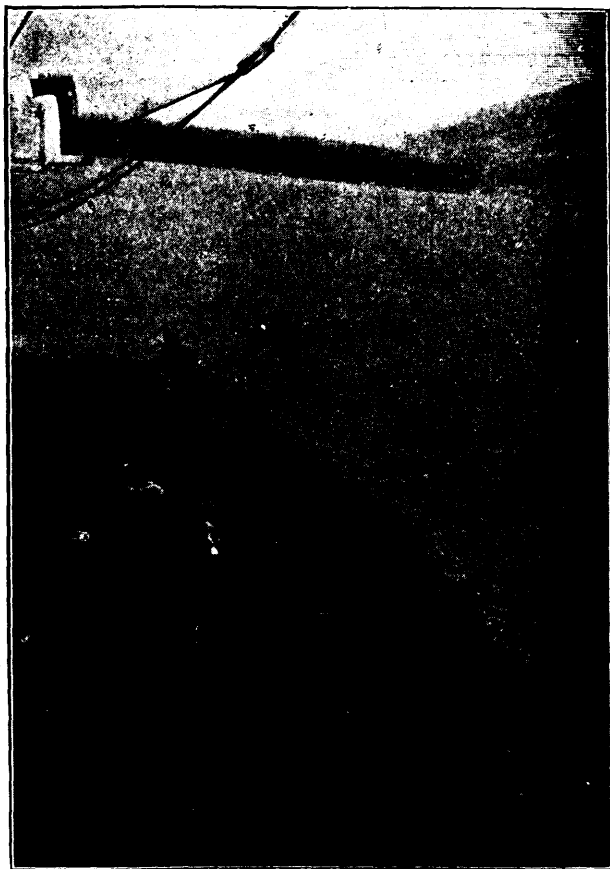
THE TEXADA ISLAND MINES.

THE prospects of mining on Texada Island are becoming very bright indeed, and shipments of ore therefrom are becoming more frequent. Two shipments from the Van Anda mine were made last month; one of thirty tons was sent by the steamer *Takia* consigned to Swansea, Wales, and arrived at Liverpool on Christmas day, and another, this time



THE ORE SHEDS, VAN ANDA MINE, TEXADA ISLAND. Of 250 tons, was shipped by the barge *Gambrina*. Our second illustration shows the ore in the sacks ready to

be taken from the scows at Vancouver and put aboard the sailing vessel as ballast. The Van Anda is now



SHIPPING VAN ANDA ORE TO SWANSEA—THE SCOWS AT VANCOUVER

being thoroughly developed, the double compartment shaft being down at present 130 feet and arrangements have been made to carry this down a further 200 feet.

Just as we go to press the astounding (if true) new is received from Ottawa that Messrs. McKenzie and Mann, the well known railway contractors have been granted by the Federal Government as a bonus for constructing 150 miles of road from the Stickine River to Teslin Lake no less than 3,750,000 acres of land along the projected route, together with other valuable concessions. We shall have more to say on this matter next month. Meanwhile, it will be interesting to notice what attempt is made to reconcile the present action of Sir Wilfred Laurier's Cabinet with those fundamental principles of Liberalism wherewith it is so hopelessly at variance.

VEIN SAMPLING.

[BY GEORGE A. GUESS, M.A., GREENWOOD, B.C.]

TO thoroughly sample a vein is no light task; but in order to arrive at a definite knowledge of the value of any ore body thorough and careful sampling is a necessity.

How many claim owners can tell you how much their ore will average although they may have had many assays made? The owner may say, "I have had assays as high as \$25 per ton in gold." The only information such a statement really conveys is that there is gold in his ore. It is a very uniformly low grade property from which a \$25 assay can not be