

# REID-NEWFOUNDLAND CO.

## Water Street Stores Department!

The well-known Headquarters for Motor Engines, Motor Boats, Motor Supplies, Gasolene and Motor Oils.  
Our Columbia Cells and Multiple Batteries give results unheard of before. **Call or send for quotation.**

**REID-NEWFOUNDLAND COMPANY.**

Programme of Mr. A. H. Allen's Evening Concert  
**METHODIST COLLEGE HALL,**  
THURSDAY NEXT, April 15th, commencing at 8.15

- PART 1.**
1. The National Anthem . . . . . Arranged by Edward Elgar  
THE CATHEDRAL CHOIR.
  2. Anthem . . . . . "Lord, for Thy tender mercies' sake" . . . . . Farrant  
THE CATHEDRAL CHOIR.
  3. Song . . . . . "Sea Pictures" . . . . . Edward Elgar  
MISS ELSIE HERDER.
  4. Recitation . . . . . "The Highwayman" . . . . . Alfred Noyes  
MISS MARGARET DULEY.
  5. Madrigal . . . . . "Here a pretty Baby lies" . . . . . H. Arnold Smith  
THE CATHEDRAL CHOIR.
  6. Songs . . . . . (a) "For Music," (b) "Bird, say, whither thy flight!" . . . . . Franz  
MISS MARGUERITE MITCHELL.
  7. Anthem, "Thou wilt keep him in perfect peace,  
whose mind is stayed on Thee" . . . . . S. S. Wesley  
THE CATHEDRAL CHOIR.
- PART 2.**
1. Ode . . . . . "Newfoundland" . . . . . A. H. Allen  
THE CATHEDRAL CHOIR.
  2. Song . . . . . "Sing, break into Song" . . . . . Albert Mallinson  
MISS ELSIE HERDER.
  3. Recitation . . . . . "The Game of Life" . . . . . Anonymous  
MR. T. O'NEIL.
  4. Solemn Melody for Strings and Organ . . . . . H. Walford Davies  
THE ORCHESTRA & MR. A. H. ALLEN.
  5. Part Song . . . . . "Departure" . . . . . Mendelssohn  
THE CATHEDRAL CHOIR.
  6. Song . . . . . "Now sleeps the crimson petal" . . . . . Roger Quilter  
MISS MARGUERITE MITCHELL.
  7. Part Song . . . . . "The Empire Flag" . . . . . A. C. Mackenzie  
THE CATHEDRAL CHOIR.

The Plan of the Room is now ready at the Atlantic Bookstore. Tickets—75c., 50c. and 30c. Programme and Book of Words will be on sale at the Hall. Price 5c.

### FROM THE HEART

of the style world we have received the newest and smartest designs and fabrics.

### WE ARE TAILORING FOR MEN

clothes that embody every new and approved idea.

At this season we wish to express our appreciation for past patronage, to extend Easter greetings, and to invite you to call and let us take your measure for a new suit.

### J. J. Strang,

Ladies' and Gents' Tailoring.

153 Water Street, - - St. John's.  
apl3.od.t

### Green Cabbage, Red Apples, etc.

Now due ex S.S. Morwenna,  
100 crates New Green Cabbage,  
40 brls Am. Baldwin Apples.  
And Overdue ex S.S. Farness Steamer,  
50 cases Small Onions,  
40 cases Sweet Oranges.

### GEO. NEAL

Advertise in The Evening Telegram

## New Wall Papers



We are now showing  
**New Canadian Wall Papers,**  
latest patterns, with Borderings to match,  
**17c. to 50c. per piece.**  
A CHOICE LOT OF JOB PAPERS,  
Canadian, American and English,  
**10c. to 20c. per piece.**

### Floor Canvas and Linoleums, Art Shades.

Floor Canvas, 2 yards Wide,  
**45c., 50c. and 65c. per yd.**

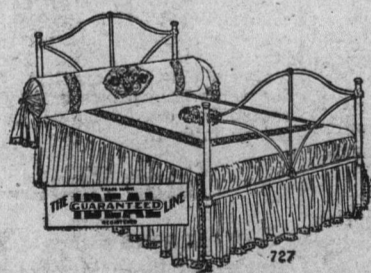


**Linoleums, 2 yds. wide, 85c. \$1.00 and \$1.10 per yard.**

**Inlaid Linoleums, 2 yds. wide, \$1.75 yd.**

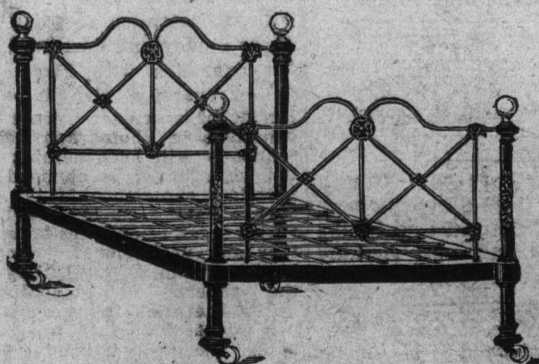
## STEER Brothers.

### Three Big Sellers.



**Bed, Spring, Wool Top Mattress, only \$7.50 outfit.**

The Bed has brass tops, White Enamel; strong and durable.  
Spring is made of woven wire with cable running through to support same.  
Mattress has wool top.  
The three for the small sum of \$7.50.



This Bed can be supplied in Black, Green or White Enamel.

We strongly recommend our Lath and Spring Bed.

The Spring is built right into the bed and does away with sides, etc. Put up in 3, 3½ and 4 ft. sizes.

**Bed and Spring, \$4.95 up.**

### The Ideal Spring is the Acme of Perfection



Our Woven Wire Springs run from . . . . . \$2.00 up  
Mattresses in the different qualities from . . . . . \$2.00 up

### The C. L. MARCH Co., Limited,

COR. WATER AND SPRINGDALE STREETS.

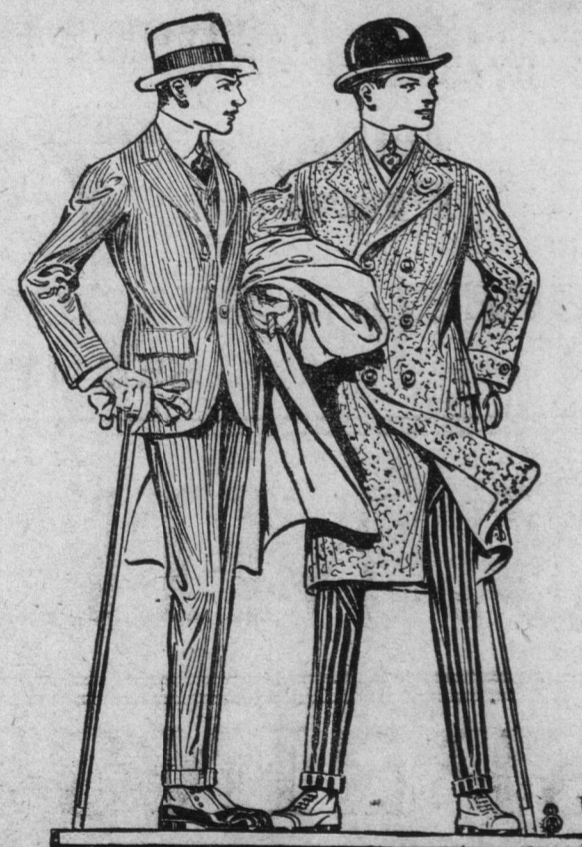
## Evening Gowns at Reduced Prices!

While many of the larger social functions are—on account of the war—conspicuous by their absence this season, there are never-the-less many smaller affairs which take place where a really smart gown is not only admissible, but really necessary.

¶ We are offering a limited number only of Evening and At-home Gowns and Blouses, in combinations of Silk and Net, Satin and Lace, Charmeuse, Ninon, Voile, etc.—in very beautiful designs and in different sizes. These Gowns and Blouses are copies of French and American models, and, owing to the depression in trade, are to be sold at heavy reductions.

¶ This week presents an excellent chance for you to purchase a dainty Evening Gown for the coming Easter festivities at actual cost.

**U. S. Picture & Portrait Co.**



The coming of Spring means the shedding of the old coat and the putting on of the new. We are showing something neat and dressy in Spring Coatings. Have you seen our Greys with silk facings? Topnotchers, aren't they? Also something good in Scotch suitings, Gleniris and Wha-haes; all hand made.

EXCLUSIVELY MAUNDER.

**John Maunder**  
SALE OF CLOTHING  
East Toronto N.Y.

## MAY Patterns

NOW ON SALE.

OUTPORTS—Cash must accompany order. When ordering, substitute, so as to avoid delay. Price of Pattern, 17c., postage included.

**CHARLES HUTTON, Sole Agent.**

Advertise in The Evening Telegram.

EIGHT PA

WEATHER  
TORONTO  
moderate  
and mild  
day.

ROPER  
ther. 55.

VOLUME

OUR

OUR

OUR

OUR

OUR

OUR

OUR

OUR

OUR

OUR

OUR

OUR

OUR

OUR

OUR

OUR

OUR

OUR

OUR

OUR

OUR

OUR

OUR

OUR

OUR

OUR

OUR

OUR

OUR

OUR

OUR

OUR

OUR

OUR

OUR

OUR

OUR

OUR

OUR

OUR

OUR

OUR

OUR

OUR

OUR

OUR

OUR

OUR

OUR

OUR

OUR

OUR

OUR

OUR

OUR

OUR

OUR

OUR

OUR

OUR

OUR

OUR

OUR

OUR

OUR

OUR

OUR

OUR

OUR

OUR

OUR

OUR

OUR

OUR

OUR

OUR

OUR

OUR

OUR

OUR

OUR

OUR

OUR