

PEDLAR

Just one Metal Plastering Lath saves a lot of labor and makes a PERFECT bond and a really fire-proof wall. It is named

PERFECT Expanded Metal LATH

Three gauges always stocked ready to ship.

Actual mesh $\frac{3}{8}$ by $\frac{1}{2}$ inch. Gives a positive key. Any good workman can cover many times more of this lath than he possibly could of wooden lath, and yet use no more mortar. Write for samples and prices. Everything in sheet metal for builders.

THE PEDLAR PEOPLE
Oshawa, Montreal,
Ottawa, Toronto,
London,
Winnipeg.

Est. 1861.

RAILS For Contractors, Switches, Gir-
ders, &c.
New and Second Hand.

LOCOMOTIVES AND CARS

John J. Gartshore
83 Front St. West,
(Opposite Queen's Hotel.) **TORONTO**

SACKETT PLASTER BOARDS
Great time saver. Fire and sound proof
Cheaper than wooden and metal lath construction. In stock at Montreal and
Toronto. Address

PERCIVAL W. ST. GEORGE,
80 St. Francois Xavier St. Montreal
R. B. H. BUCKNER, Ontario Lime Association,
Toronto.
JAS. J. MURPHY, 85 St. Peter Street, Quebec.

ARTIFICIAL STONE PAVEMENTS

SIDEWALKS A SPECIALTY
CORPORATIONS Will do well to consider our work
and prices before letting contract.

The Silica Baritic Stone Company
of Ontario, Limited.

WALTER MILLS Head Office:
General Manager. **INGERSOLL, ONT.**

JOHNS. FIELDING

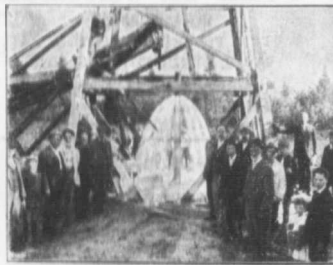
Mem. Soc. C.E. West Penn. '87
Mem. Engineer's Club, Toronto

CONSULTING ENGINEER
Expert on Bridges and Machinery
Room 2, 15 Toronto Street, **TORONTO, ONT.**

WILLIAM FRY SCOTT STRUCTURAL ENGINEER

Consultation or Design: Buildings, Building
Construction, Foundations, Walls, Roofs,
Bridges, Masonry, Fireproof, Reinforced Con-
crete, Reinforced Brick, Steel, Timber, Specifi-
cations, Examinations, Valuations, and Reports
for Investment.

Aberdeen Chambers Cor. Adelaide
and Victoria Streets, TORONTO, ONT.
Main 4724 North 4260



Flowing Water Well at Barrie, Ont.

Drilling Contractors

WATER, SALT, OIL AND GAS WELLS
to any depth from 100 to 3000 feet.
Contracts taken in any part of Canada.
Excellent references. Estimates, Geo-
logical reports. Expert Drillers and
Complete Drilling Rigs Furnished.

Established 1865

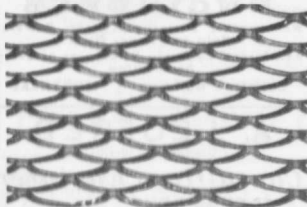
JAMES PEAT & SONS
Petrolia, Ontario

JOSSON CEMENT

Is the Highest Grade Artificial Portland Cement and the Best for High
Class Work. Has been used largely for Government and Municipal Works.

TO BE HAD FROM ALL CANADIAN DEALERS OR FROM
C. I. DE SOLA, 180 St. James Street, MONTREAL

"GALT" EXPANDED STEEL LATH



**STRONG. ECONOMICAL, RIGID,
UNIFORM, FLAT, DURABLE.**

See this Lath before buying elsewhere.
Once used, always used.

Samples and full particulars mailed
free upon request.

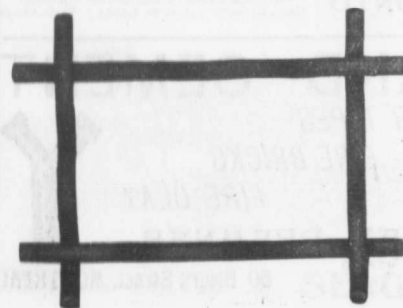
**THE GALT ART METAL CO.,
LIMITED, GALT, ONT.**

OR DUNN BROS., WINNIPEG, MAN., AND REGINA, SASK.

CRUSHED AND BUILDING STONE

For—Concrete, Roadwork and Sidewalks.
Also DOLOMITE LIMESTONE for
fluxing.

Doolittle & Wilcox Limited, - Dundas, Ont.
Selling agents for Aetna Dynamite.



CONCRETE BONDING OF CRIMPED STEEL WIRE

**THE STRONGEST,
BEST AND CHEAPEST**

If interested write for pamphlet
and full particulars

**THE
B. GREENING WIRE CO.,
LIMITED
HAMILTON, ONT.
MONTREAL, QUE.**