

## THE ORE DEPOSITS OF THE SIMILKAMEEN.

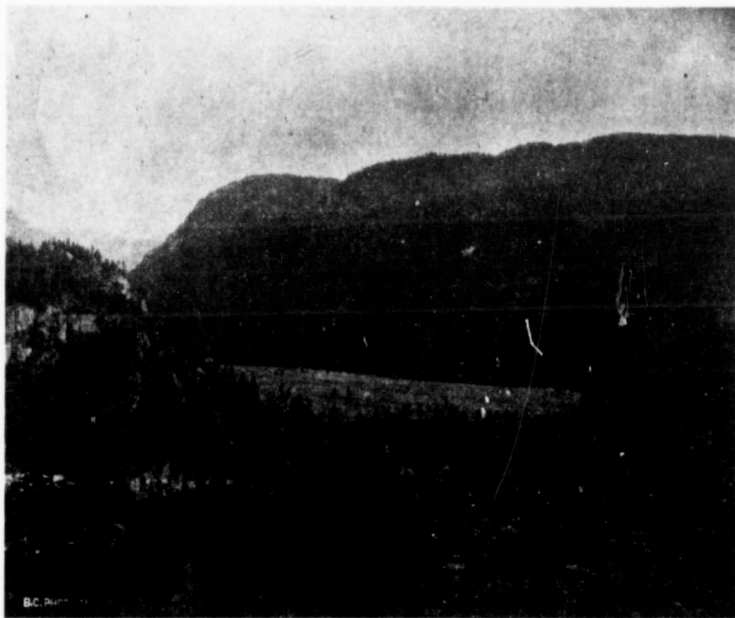
BY CHAS. E. OLIVER,  
(Camborne and South Wales School of Mines).

**T**HE Similkameen country is bounded on the north by the Trout creek and Nicola divides, on the south by the International boundary line, on the east by the ridge forming the divide between the Okanagan and Similkameen rivers, and on the west by the Hope mountains.

*Early History.*—Considerable placer mining was carried on here in the later fifties, principally at Granite creek, and this branch of the industry is still being conducted by several hydraulic companies. It is interesting to note these gravels carried platinum which, relatively speaking, quite recently was discarded as "black sand" being afterwards gathered up by later and wiser fortune

The Maurice Bros. made, in '99, an exceedingly rich strike on the east side of the Similkameen, opposite Shuswap creek. A bond was obtained last summer on these claims by an eastern syndicate whose manager, Mr. Bristol, has been operating all this winter. They have sacked and are now shipping their first batch. The ore is very rich gold, appearing at times in coarse grains in the quartz and carrying quite a heavy percentage of copper pyrites in some samples.

(2). The arsenical-pyrite belt lies between 15-mile creek and Stirling creek. This arsenical ore is usually high-grade specimens, running \$2,000 and upward being not uncommon. The principal property on this belt is the Nickel Plate, which is being worked under the management of M. R. Rogers, and has had a force of 30 or 40 men employed for the last two years. A compressor was installed on this property last winter



HEDLEY CITY SITE.

seekers. The first year that any real interest was taken in the ore deposits of this district was '97. In this year the Nickel Plate mine was staked and bonded and the Sunset, of Copper mountain, came into prominence. In the spring of '98 the country was overrun with prospectors and mining men, and since this period the work of improvement has been steadily progressing.

*Characteristic Ore Bodies and their Localities.*—The mineral deposits of this district may be classified into four: (1) The free-milling properties; (2) Arsenical pyrites having high values in gold; (3) Copper; (4) Coal.

(1). The free-milling properties are chiefly situated on the Lower Similkameen. On the summit, at the head of 15-mile and Olalla creek, some quartz very rich in both silver and gold has been discovered on the Savage group, and on the group adjoining belonging to E. Bullock-Webster & Co. About 1,000 feet of drifting was done on this group last summer and operations will no doubt be resumed in the spring.

and a dozen or more cabins erected for the married employees. Numerous tunnels have been driven on the property. Their main tunnel is in a distance of 400 feet and raising has been in progress for the last few months. The richest ore is carefully guarded and the natural disposition on the part of the management to reticence forbids close observation as regards the nature of the deposit. Let it suffice to say they have a very high-grade body of ore, whether ledge or deposit.

The claims adjoining this property have very promising showing but farther than 100 feet none of them have been explored, though deals are now in course of completion whereby some of them will be opened up shortly.

On 16-mile creek, on the Two Brothers claim, a lead of high-grade arsenical pyrites has been worked for the last three seasons by the Scrapelli Bros. About 2,000 feet of drifting has been done on this claim. The lead is very well defined. On Stirling and Henry creeks