



### How About Your Oil?

Is your automobile, truck or tractor properly lubricated? Your motor smooth-running quiet and powerful? Each valve, bearing and cylinder cushioned against grinding friction with a protective oil film?

It is—if you use Imperial Polarine. This standard, high grade motor oil insures correct lubrication the year round. Doesn't congeal in cold weather and holds its body at any engine heat.

Imperial Polarine burns clean—leaves no grit or heavy carbon to score cylinder walls—seals in all the power.

In three grades—Imperial Polarine, Imperial Polarine Heavy, Imperial Polarine A. For transmission or differential lubrication use Imperial Polarine Oils and Greases.

For automobile, truck and tractor lubrication use Imperial Polarine.

Buy Imperial Polarine by the Chart of Recommendations which is on display wherever Imperial products are sold.

There are also Imperial Lubricants for every other farm lubricating need.

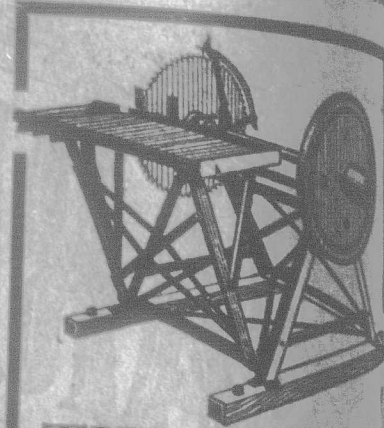
Sold in one gallon and four gallon sealed cans, half-barrels and barrels, also 12½ gallon steel drums.

Let the Imperial Oil man help you with your lubrication problems.

**IMPERIAL OIL LIMITED**

Power - Heat - Light - Lubrication  
Branches in all Cities

IMPERIAL  
POLARINE  
IMPERIAL  
POLARINE HEAVY  
IMPERIAL  
POLARINE A



### THE LUNDY SAW FRAME

is of extra heavy steel, well braced, ensuring rigidity. The 17-inch balance wheel, weighing 80 lbs., gives a smooth, steady running only found in the Lundy.

A feature appreciated by all operators is the guard that is adjustable by all operators to the blade from 20° to 30°. The roller on the tilting table for convenience in handling long poles is something you will find highly useful. There are adjustable, dustproof bearings on the line shaft. These Saw Frames are all Lundy built, and contain the best material that money can buy. Only \$52 L.o.b. Toronto.

Saw Blades may be had from 20" to 30" with any size hole. The following prices are L.o.b. factory, and terms are cash with order.

**SAW BLADES:**

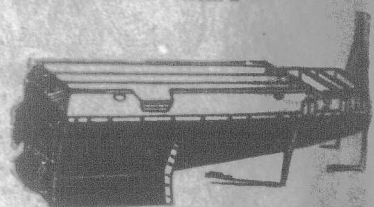
20-in. Saw Blade	\$ 4.00
22-in. "	4.50
24-in. "	5.00
26-in. "	5.50
28-in. "	6.00
30-in. "	6.50

Write if you want further particulars.

A. R. LUNDY  
251 King St. W. TORONTO

### Bill's Sugar and Syrup Wasn't Up To Much

That's what his neighbors said, they were right too, but there were reasons, this was not fresh enough or clean enough, his boiling outfit was out of date and he scoured the whole batch. He did a lot of hard work with poor results. It is all a question of proper outfit. With a



### GRIMM CHAMPION Outfit

In your maple grove you are sure of making the best possible syrup and sugar. Do it cleanly and quickly and get more money out of it. Scrap your old outfit and make something worth while out of your sugar bush. We can help you a lot if you write us.

The Grimm Mfg. Co.  
60 Wellington Street, Montreal, Que.

### Baled Shavings

For insulation and bedding.

JOHN B. SMITH & SONS, TORONTO  
Lumbermen Doors, Sash, etc.  
Established 1851.

"Goes Like Sixty"

**GILSON**

### This Engine Will Cost You Nothing

You need an engine—get a Gilson on our new easy-payment plan, and it will pay for itself. You have the work for it to do this fall and winter, help is scarce and high priced—save yourself a lot of worry, and enjoy that "Feeling of Security" which is such a definite part of the staunch, reliable Gilson Engine.

Gilson Engines have long enjoyed an indisputable reputation for dependability, power, simplicity and economy. This year finds us with an even more attractive proposition for the discriminating buyer. Prices of everything you have been buying have risen a remarkably low price. Write to-day for catalogue, price and easy-payment plan, stating what size you are interested in.

**Gilson Mfg. Co. Ltd., 259 York St., Guelph, Ont.**

25

## THE WONDERFUL GILSON

**\*SIMPLY CAN'T BE CLOGGED.** The simple, scientific, carefully worked-out filler makes it absolutely impossible to clog the throat of the blower. The Gilson is the lightest running blower cutter made. It has broken all records for high elevation and rapid work with light power. A 4 h.p. operates the small size Gilson is rightly called the

### KING OF SILO FILLERS

because of its remarkable elevating powers, absolute safety, durability, strength and simplicity—it stands supreme. It has convenient and quick knife adjustment; solid steel-bound cutting wheel; patented safety reverse—and is guaranteed to cut and elevate MORE ensilage with the SAME power than ANY other ensilage cutter IN THE WORLD. Write to-day for catalogue and proof. Manufactured and guaranteed by—

**GILSON MANUFACTURING CO. LTD., 509 York St., GUELPH, Ont.**

"GOES LIKE SIXTY"

When writing advertisements will you kindly mention The Farmer's Advocate.