



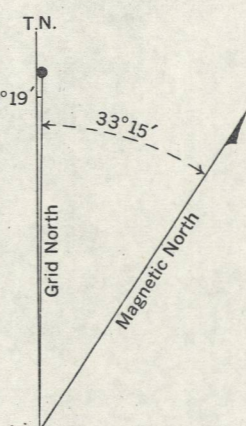
DEPARTMENT OF NATIONAL DEFENCE
ARMY SURVEY ESTABLISHMENT

REFERENCE

Road, hard surface, heavy duty	3 or more lanes	Part completed
.. hard surface, heavy duty	2 lanes	Route No.
.. hard surface, medium duty	3 or more lanes	2 lanes
.. loose surface, graded and drained	3 or more lanes	Not less than 14 ft wide
Other Roads		Poor condition
Private Road		
Trail		
Railway, double track	Station	
.. single track	Stop	
.. abandoned	Sliding	
.. narrow gauge or electric		
Bridge, overpass or underpass		
Boundaries, International		
.. Provincial		
.. County		
Reservation, Indian, Military, Nat. or Prov. Parks, etc.		
Electric Power Line	on Steel Towers	on Wood Poles
Telephone, trunk route		
Triangulation Station		
Camera Station		
Bench Mark	B.M.	357.4
Spot Height, (in feet)		547
House		
Barn		
Mill or Factory, small	S.M.	
School	S	
Church		
.. conspicuous Tower or Spire		
Post Office	P	
Telephone Exchange	T	
Mine or Open-Cut		
Cemetery or Churchyard		
Quarry		
Sand or Gravel Pit		
Cliff		
Cutting		
Embankment, Dump, etc.		
Lighthouse		
Wharf or Pier		
Foreshore Flats		
Swamp or Marsh		
Lake or Slough, non permanent		
Glacier or Snowfield		
Stream, intermittent		
Contours, elevation		
.. depression		
Wooded Areas, heavy		
.. light		

INDEX TO ADJOINING SHEETS

105 A/6	105 A/7	105 A/8	95 D/5	95 D/6
105 A/3	105 A/2	105 A/1	95 D/4	95 D/3
104 P/14	104 P/13	104 P/12	94 M/13	94 M/14
104 P/11	104 P/10	104 P/9	94 M/12	94 M/11
104 P/6	104 P/7	104 P/8	94 M/5	94 M/6



APPROXIMATE MEAN DECLINATION 1949
FOR CENTRE OF SHEET

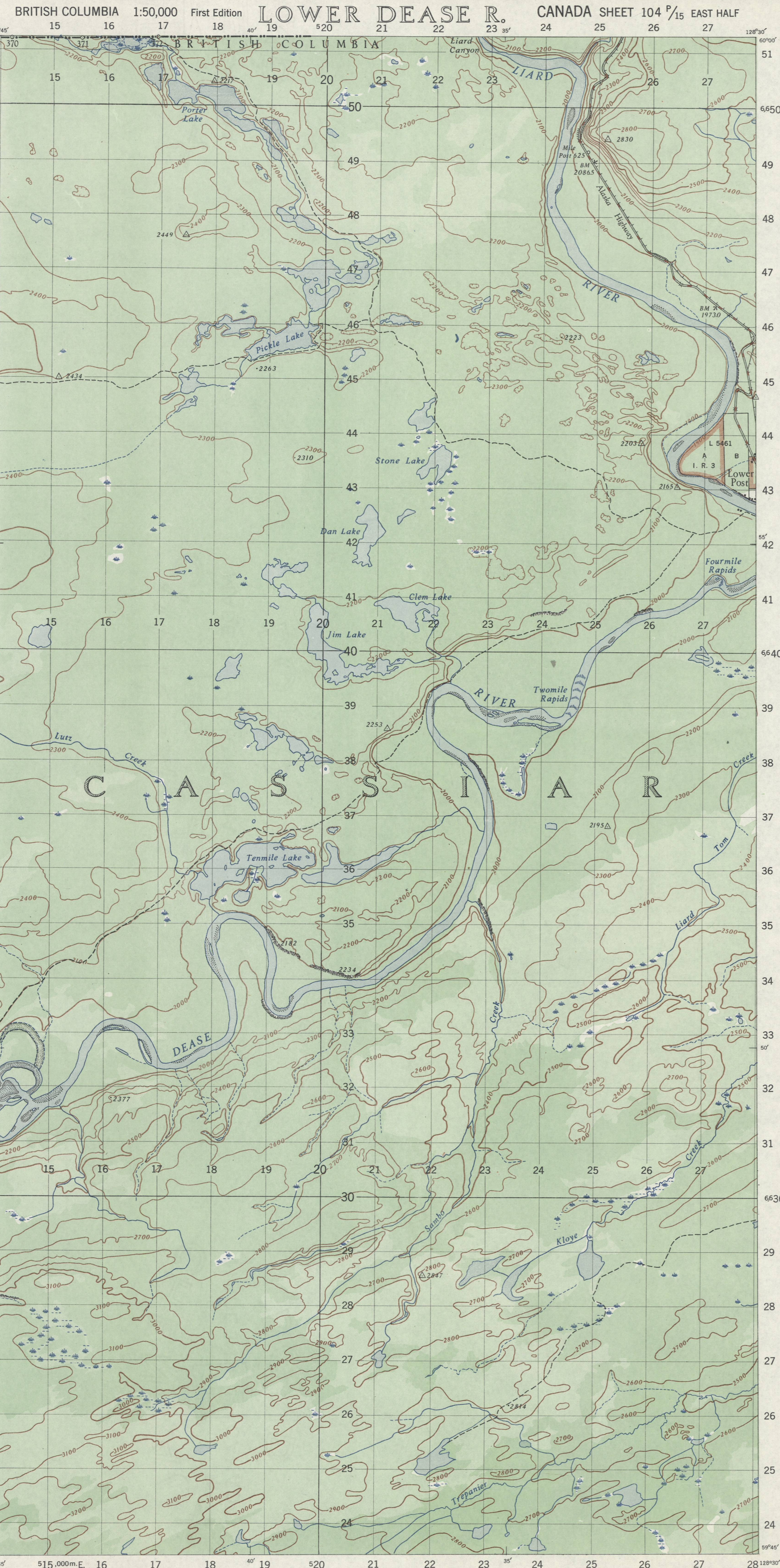
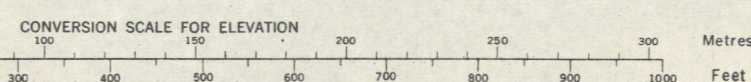
THE VARIATION OF THE COMPASS
NEEDLE IS DECREASING 2 MINUTES
ANNUALLY

TO GIVE GRID REFERENCE ON THIS SHEET FIGURES, IGNORE THE SMALLER FIGURES PRINTED AROUND THE MARGIN OF THE MAP. THESE ARE FOR FINDING THE FULL CO-ORDINATES. USE ONLY THE LARGER FIGURES PRINTED IN THE MARGIN OR ON THE FACE OF THE MAP. Vg. 920	
POINT	Triangulation Station
FOR STANDARD MILITARY GRID REFERENCE	
East	North
Take West edge of square in which point lies, and read the figure printed opposite this line on North or South margin or on the line itself on the face of the map. Estimate tenths Eastward	Take South edge of square in which point lies, and read the figure printed opposite this line on East or West margin or on the line itself on the face of the map. Estimate tenths Northward
21	38
1	5
211	385
STANDARD MILITARY GRID REFERENCE 211385 (To nearest 100 Metres)	
Nearest similar grid reference: 100,000 Metres (Approximately 63 Miles)	

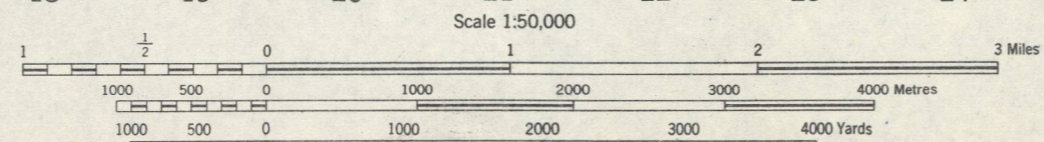
ONE THOUSAND METRE UNIVERSAL
TRANSVERSE MERCATOR GRID, ZONE 9

SHEET 104 P/15 EAST HALF

CONTOUR INTERVAL 100 FEET
All Elevations in Feet above Mean Sea Level



Surveyed and compiled by the Topographical Surveys Branch,
Department of Lands and Forests, British Columbia,
with minor additions by the Army Survey Establishment, R.C.E.
Cartography and reproduction by the
Army Survey Establishment, R.C.E.
Published 1949.



Note: Copies of this map required for official
purposes may, subject to procedure laid down
in C.A.C. 172.1, be obtained from Army
Survey Establishment R.C.E. AHQ Ottawa

McGILL UNIVERSITY
MAP COLLECTION
SUPERSEDED
EDITION
GEOGRAPHY DEPARTMENT
MONTREAL

GEOG. 65