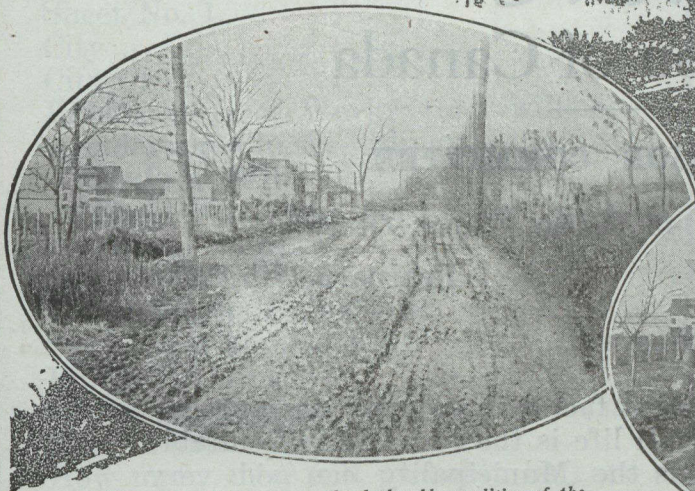
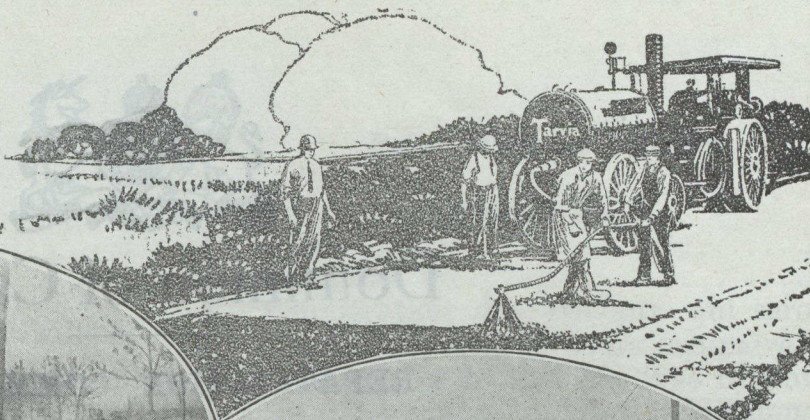
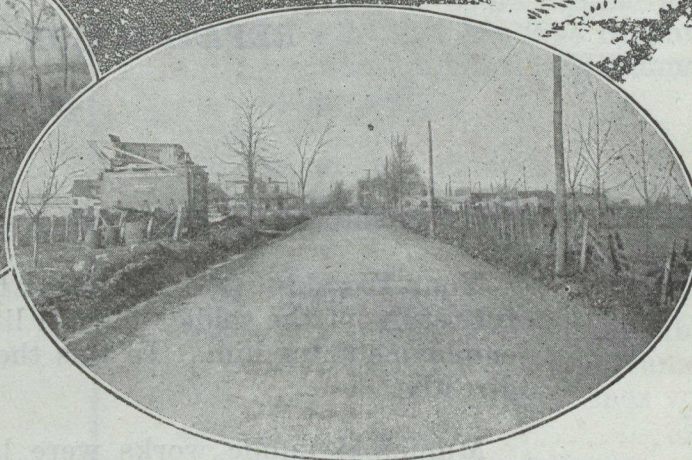


Tarvia

*Preserves Roads
Prevents Dust-*



The above picture shows the deplorable condition of the Beaconsfield Station Road, Beaconsfield, Que., before the use of "Tarvia X." The illustration at the right shows how Tarvia has transformed the surface.



An Inexpensive Transformation

The old-style dirt-gravel-and-water bound macadam roadways were costly ones — costly in their excessive and incessant maintenance expenses.

They rapidly disintegrated under motor traffic and had to be renewed repeatedly. The motor-cars and tracks jouncing over those hummocks had to be renewed, too. The cost did not show in the taxes, but it was a community burden just the same.

The most popular roadways today for county, state and military use are undoubtedly Tarvia roads, because they represent the most economical form of permanent road-construction.

Tarvia roads resist water and frost. A well-built Tarvia road is the same in the spring when the frost is coming out of the ground as at any other season. It is a durable, clean, all-the-year-round road.

On its dustless contour motor-traffic moves swiftly without damage to the roadway. Year after year the new Tarvia-macadam will give perfect satisfaction with little or no expense for maintenance.

There are many miles of Tarvia roadways today all over the Dominion which are giving satisfaction because of their long service and low cost.

If you are in any way interested in the road problem, write for booklets or for any specific information you may desire.

Special Service Department

This company has a corps of trained engineers and chemists who have given years of study to modern road problems. The advice of these men may be had for the asking by any one interested.

If you will write to the nearest office regarding road problems and conditions in your vicinity, the matter will be given prompt attention.

The **Barrett** Company
LIMITED

MONTREAL

TORONTO

WINNIPEG

VANCOUVER

ST. JOHN, N.B.

HALIFAX, N.S.

SYDNEY, N.S.