

LAWSON'S CONCENTRATED FLUID BEEF

Makes most delicious Beef Tea.
It is a great strength giver, as it contains all the nutritious and life-giving properties of meat in a concentrated form. Recommended by the leading physicians.

SOLE CONSIGNEES:

LOWDEN, PATON & CO.,
55 Front St. West Toronto.

ALWAYS ASK FOR

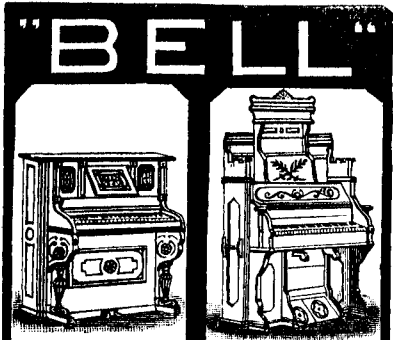
ESTERBROOK STEEL PENS



Superior, Standard, Reliable.
Popular Nos.: C48, 14, 130, 135, 161
For Sale by all Stationers.

DUNN'S BAKING POWDER

THE COOK'S BEST FRIEND



PIANOS ARE THE ORGANS
LEADING INSTRUMENTS
FOR PURITY OF TONE
& DURABILITY.
CATALOGUES FREE.
W. BELL & CO. GUELPH, ONT.



Everybody
READS
THE
**Birth
Marriage
AND
Death**
ANNOUNCEMENTS
IN
The Mail
Toronto, Canada

50 Cents Each Insertion

SALESMEN

We wish a few men to sell our goods by sample to the wholesale and retail trade. Largest manufacturers in our line. Enclose 2-cent stamp. Wages \$3 Per Day. Permanent position. No postal answered. Money advanced for wages, advertising, etc. Centennial Manufacturing Co., Cincinnati, Ohio.

**SALARY
—FOR—
3 YEARS**

We wish to employ a reliable man in your county. No experience required; permanent position for three years. Salary increased each year. Light, easy, genteel business. Money advanced for salary, advertising, etc. We are the largest manufacturers in our line. Enclose 2-cent stamp. No attention to postals. Address CENTENNIAL MFG CO., CINCINNATI, O.

R.R.R. RADWAY'S READY RELIEF.

The Most Certain and Safe

PAIN REMEDY

In the world, that instantly stops the most excruciating pains. It never fails to give ease to the sufferer of pain arising from whatever cause. It is truly the great

CONQUEROR OF PAIN,

And has done more good than any known remedy. For SPRAINS, BRUISES, BACKACHE, PAIN IN THE CHEST OR SIDES, HEADACHE, TOOTHACHE, or any other external PAIN, a few applications rubbed on by hand act like magic, causing the pain to instantly stop. For CONGESTIONS, INFLAMMATIONS, RHEUMATISM, NEURALGIA, LUMBAGO, SCIATICA PAINS IN THE SMALL OF THE BACK, more extended, longer continued and repeated applications are necessary. All INTERNAL PAINS, DIARRHOEA, DYSENTERY, COLIC, SPASMS, NAUSEA, FAINING SPELLS, NERVOUSNESS, SLEEPLESSNESS are relieved instantly and quickly cured by taking inwardly 20 to 60 drops in half a tumbler of water.

Price 25 Cents a Bottle. Sold by all Druggists.

WITH RADWAY'S PILLS THERE IS NO BETTER CURE OR PREVENTIVE OF FEVER AND AGUE.

Awarded the
Highest Prizes
at the International
Exhibition,
Philadelphia.

Honourable mention, Paris, 1878.
Medal and Diploma, Antwerp, 1885.

COSCRAVE & CO.

For Purity of
Flavour and
General Excellence
of Quality

MALTSTERS, BREWERS AND BOTTLERS,
TORONTO,

ARE SUPPLYING THE TRADE WITH THEIR SUPERIOR

ALES AND BROWN STOUTS,

Brewed from the finest Malt and best Bavarian Brands of Hops. They are highly recommended by the Medical Faculty for their purity and strengthening qualities.

Brewing Office, - 240 Niagara Street.

TELEPHONE No. 264.



ILLUMINATED

ADDRESSES

A SPECIALTY

J. S. HAMILTON & CO.,
Brantford,
SOLE AGENTS FOR CANADA

— FOR THE —

Vin Villa Vineyards, Pelee Island.
Pelee Island Wine and Vineyards
Co., Ltd., Pelee Island and Brantford.

West View Vineyards, Pelee Island.
Fairfield Plain Vineyards, Fairfield Plain.

St. Malo Vineyards, Tilsonburg.

Our brands are the best in the market. Ask your Wine Merchants for them. Catalogues forwarded on application.

J. S. Hamilton & Co.
91, 93 & 95 DALHOUSIE STREET,
BRANTFORD.

Canadian Wine Manufacturers and Vine Growers' Agents.

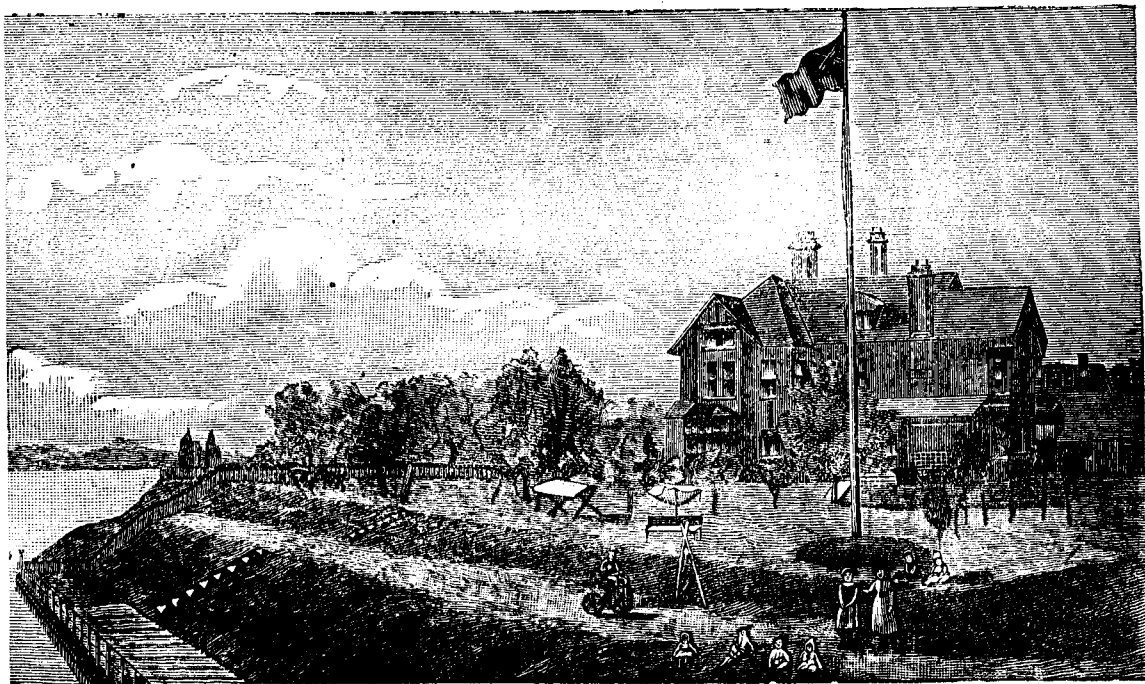
DUNN'S PENETRATING MUSTARD OIL!

Relieves Rheumatism, Neuralgia,
Bronchitis and Colds.

Will not blister or cause pain. Sold by whole sale and retail trade. Price 25c. per bottle.

W. G. DUNN & CO.,
MUSTARD MANUFACTURERS,
HAMILTON, - ONTARIO.

FOR SALE BY TENDER.



— LAKESIDE HALL —

TENDERS WILL BE RECEIVED UP TO 28th NOVEMBER

For the purchase of that desirable property known as LAKESIDE HALL. This splendid property is situated on the banks of Lake Ontario, in the town of Parkdale, which has lately been annexed to the City of Toronto, being some 300 yards from the Suburban Station on G. T. R., of which there are some twelve trains to city daily. It is also about five minutes walk from the City Passenger Railway; cars run every five minutes from 6 a.m. to 12.15 p.m. Frontage on Jameson Avenue 400 feet by a depth of 300 feet. The lawn slopes down to the lake, along which there is a substantial wharf with handsome iron fenders, making a delightful promenade. The facilities for Boating and Bathing are unsurpassed. The grounds are handsomely laid out with a large quantity of Choice Fruit and Ornamental Trees and Shrubs. The house is Solid Red Brick (Queen Anne Style), and was built under the direct supervision of a first-class Architect, and contains Sixteen Large Rooms, and heated throughout with Hot Water Coils; has Electric Bells and Speaking Tubes throughout. Cellar is finished in Portland Cement and is full size of house, partitioned off into compartments. The Verandah on the south side presents a magnificent view of the lake, and adjoining same is a large Green House. The halls are large and well lighted and some twelve feet wide. In all it is one of the finest properties in Ontario. No tender necessarily accepted.

For further information apply on the premises, No. 240 Jameson Avenue, Parkdale, or to

CLARRY & Co., Agents, 63 Front Street West, TORONTO.