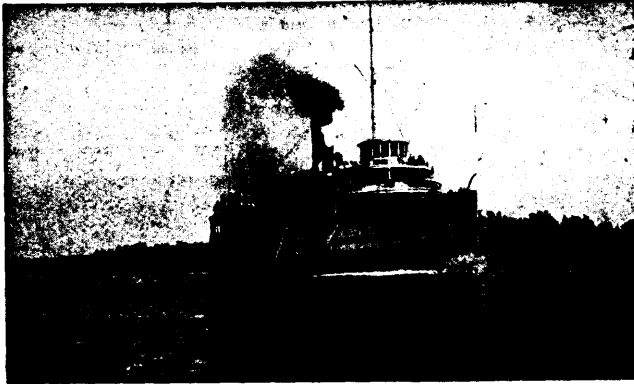


# RICHELIEU AND ONTARIO

# Navigation Company

AMERICA'S SCENIC  
LINE



"Niagara  
to  
the  
Sea."

The  
Magnifi-  
cent New  
Steamer  
"TORONTO"

Leaves  
Toronto  
TUESDAYS, THURSDAYS  
and  
SATURDAYS.

Other Steamers  
ON ALTERNATE DAYS FOR

MONTREAL via ROCHESTER, KINGSTON, GANANOQUE, CLAYTON,  
ALEXANDRIA BAY,  
THOUSAND ISLANDS and RAPIDS OF THE ST. LAWRENCE.

Connecting with Steamers for Quebec, Murray Bay and the Famed Saguenay River

The  
"Manoir  
Richelieu"

ONE OF THE MOST  
BEAUTIFUL  
HOTELS  
ON THE  
CONTINENT.

THIS MAGNIFICENT HOTEL, THE BEST  
ON THE LOWER ST. LAWRENCE, HAS  
JUST BEEN BUILT BY THIS COMPANY  
IN ONE OF THE MOST BEAUTIFUL  
LOCALITIES IN AMERICA.



Send for particulars to

JOS. F. DOLAN,  
2 King St. East, TORONTO, ONT.

H. F. CHAFFEE,  
128 St. James St., MONTREAL, P.Q.

L. H. MYRAND,  
Dalhousie Street, QUEBEC, P.Q.

OR

C. F. GILDERSLEEVE,  
GENERAL MANAGER, MONTREAL.

T. HENRY,  
TRAFFIC MANAGER, MONTREAL.