



"FENERTY" SHOVELS
—FOR—
Miners, Contractors and
Heavy Work.

"GILMOUR" SHOVELS
—FOR—
General Purposes,
MANUFACTURED BY
The HALIFAX SHOVEL CO.
HALIFAX, N. S.

ALL GOODS GUARANTEED.
SPECIAL SIZES AND SHAPES MADE TO ORDER.

Genuine Garlock Parkings
FOR ALL PURPOSES.
Pipe and Boiler Coverings,
ENGINEERS SUPPLIES.

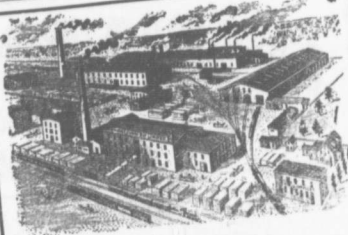
also
"Tauril" High Pressure Jointing
the Best Sheet Packing yet
Produced.

THE GARKOCK PACKING CO.
HAMILTON, ONTARIO

Used by Collieries in Lancashire, Staffordshire & Yorkshire

'XTERRA' COLLIERY LAMP OIL
For Marsaut, Muesole, Deflector or Closed Lamp.

PURE WHITE FLAME. LOW PRICE.
E. WOLASTON, Dutton St. MANGHESTER
Sole Representatives for Canada, AUSTEN BROS.,
Halifax, N. S.



—MANUFACTURERS OF—
RAILWAY STREET and MINING
CARS,
CAR WHEELS Church Pews.
FORGINGS & Fittings for Stores, Schools &c.
CASTINGS A SPECIALTY.
Large Stocks of Foreign and Domestic Lumber on Sale.
BUILDING MATERIALS
GENERAL.
Rhodes, Curry & Co., Ltd.
Branch ROBBIE STREET
HALIFAX, N. S. **AMHERST N. S.**

INTERCOLONIAL RAILWAY

On and after SUNDAY, JAN. 10th., 1909, trains
run daily, (Sunday excepted,) as follows:—

—TRAINS LEAVE STELLARTON.—

No. 144 Mixed for Hopewell.....	8.55
79 Mixed for Trenton	8.55
12 Mix. 4 for Hopewell	7.00
18 Express for Halifax and St. John	7.40
21 Express for Pictou Landing	7.45
21 Mixed for Pictou	8.30
22 Mixed for Mulgrave	11.15
22 Express for Sydney	11.15
22 Mixed for Pictou	11.15
22 Mixed for Trenton	11.15
120 M. and for New Glasgow	11.15
21 Express for Halifax and Montreal	11.15
140 Mixed for Pictou	11.15
101 Mixed for Pictou Landing	9.50
22 Mixed for Hopewell	21.50
63 Mixed for New Glasgow	21.50
17 Express for New Glasgow	21.50
66 Express for Pictou	21.50

—TRAINS ARRIVE AT STELLARTON.—

No. 79 Mixed from Hopewell.....	6.50
12 Mixed from Trenton	7.00
18 Express from New Glasgow	7.35
21 Express from Hopewell	7.35
21 Mixed from Trenton	10.35
22 Mixed from New Glasgow	10.35
22 Mixed from Pictou	10.35
22 Mixed from Mulgrave	11.00
19 Express from Halifax and St. John	11.00
120 Mixed from Sydney	11.00
22 Express from Pictou	11.00
22 Mixed from Pictou Landing	11.00
77 Mixed from Hopewell	10.35
63 Mixed from Pictou	21.45
66 Express from New Glasgow	21.45
17 Express from St. John and Halifax	21.45

All trains are run by Atlantic standard time Twenty-four
hour notation. Twenty-four O'clock is midnight. (Moncton,
N. B., Dec. 31st. 1908.)

Sleeping and Dining Cars between Halifax
and Sydney, on Nos. 19 and 20 trains.