

St. Andrew's College

A Residential and Day School for Boys.

TORONTO



New Buildings

Handsome new buildings, thoroughly modern in equipment. Large, airy and convenient. Situated in north Rosedale, Toronto's choicest residential district. The college property consists of 24 acres, providing ample play fields. **Separate Junior Residence. Upper and Lower School. Strong Staff, thorough instruction.** Boys prepared for the Universities and the Royal Military College.

Winter Term commences Nov. 20th, 1905.

REV. D. BRUCE MACDONALD, M.A., Principal

Write for Calendar

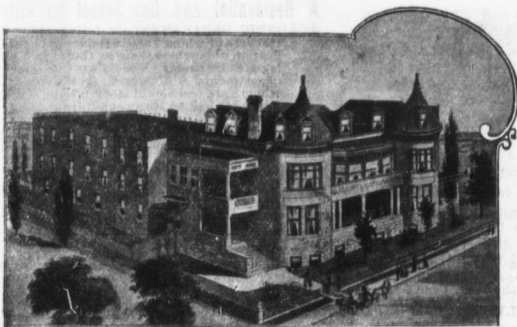
Westminster College

(Formerly Toronto Presbyterian Ladies College)

**OPPOSITE
QUEEN'S PARK**

**BLOOR ST. WEST
TORONTO**

**A RESIDENTIAL
SCHOOL
FOR GIRLS**



A thorough training in all work for the Universities and for examinations in Music and Art. Affiliated with the Toronto Conservatory of Music. A Primary Department for junior pupils. Teachers of character and experience in every department.

SECOND TERM BEGINS TUESDAY, NOVEMBER 21ST, 1905

FOR CALENDAR AND OTHER INFORMATION, WRITE

**REV. A. R. GREGORY, B.A.,
PRINCIPAL**

**MRS. A. R. GREGORY,
LADY PRINCIPAL**

Please mention THE TEACHERS MONTHLY when writing to Advertisers