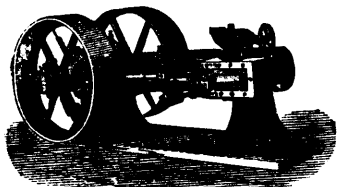


E. LEONARD & SONS, London, Ontario.**LEONARD**

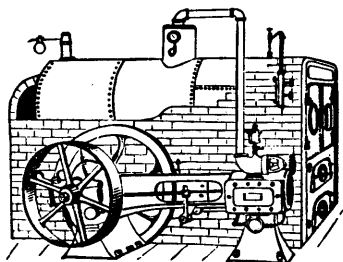
Ball Automatic and Compound Engines

for Electrical Plants and Street Railway Service.



AGENCIES AND STOCKS KEPT
MONTREAL AND ST. JOHN, N.B.

SEND FOR PRINTED MATTER.



4 to 150 HORSE POWER

HOISTING ENGINES.

STANDARD HEATERS,

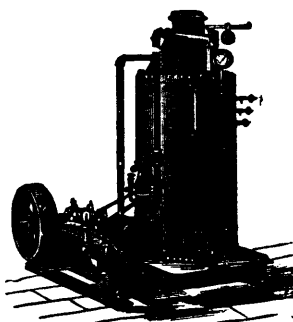
STEAM PUMPS,

INJECTORS, ETC.

LEONARD

TANGYE and LEONARD
Engines.

Standard Stationary
Steel Boilers with one
Sheet on Bottom.

**OTTAWA BOILER WORKS.****W. J. CAMPBELL,**

482-484 MARIA, ST., OTTAWA, ONT.,

MANUFACTURER OF EVERY DESCRIPTION OF

MINING, MARINE AND STATIONARY BOILERS.

The Fitzgibbons Patent Marine Boiler a Specialty; also Water Heaters, Air Receivers, Waste Burners, Tanks Hoisting Pails, Flues, Smokestacks, and every description of Sheet and Plate Steel or Ironwork made to order.

SECOND - HAND BOILERS

and a complete line of Steam Gauges, Water Gauges, Inspirators, Injectors, and other Fittings constantly on hand.

Inquiries and Orders promptly attended to.

Our FRICTION GRIP PULLEYS

ARE THE ONLY SPLIT GRIP PULLEYS & CUT OFF
COUPLINGS MADE. GIVE EVERY SATISFACTION AS
DRIVERS OR DRIVEN PULLEYS. FULLY GUARANTEED.

WATEROUS ENGINE WORKS CO.
BRANTFORD, CANADA.

ENGINES, SAW MILL AND BRICK MACHINERY OUR SPECIALTY.

SUBSCRIBED CAPITAL - \$100,000.

FULL GOVERNMENT DEPOSIT.

**THE BOILER INSPECTION
and Insurance Company of Canada.**



CONSULTING ENGINEERS.

G.C. ROBB, Chief Engineer. A. FRASER, Secy. Treas.

HEAD OFFICE, 2 TORONTO ST.

TORONTO.

THE PREVENTION OF ACCIDENT AND ATTAINMENT OF ECONOMY IN THE USE OF STEAM OUR CHIEF AIMS.

Agents at Montreal, J. W. GRIER & MUDGE, 1725 Notre Dame Street.
Agent at Ottawa, J. K. STEWART, Sparks St. Agent for Nova Scotia, G. W. JONES, Halifax.
Agent for New Brunswick, R. W. W. FRANK, St. John.
O. E. GRANBERG, Inspector, Montreal. W. J. COLLESTON, Inspector, St. John, N.B.

**Money Orders.**

MONEY ORDERS may be obtained at any Money Order Office in Canada, payable in the Dominion and Newfoundland; also in the United States, the United Kingdom, France, Germany, Austria, Hungary, Italy, Belgium, Switzerland, Portugal, Sweden, Norway, Denmark, the Netherlands, India, Japan, the Australian Colonies, and other Countries and British Colonies generally.

On Money Orders payable within Canada, the commission is as follows:

If not exceeding \$4	2c.
Over \$4, not exceeding \$10	5c.
" 10, " "	20c.
" 20, " "	40c.
" 40, " "	60c.
" 60, " "	80c.
" 80, " "	100c.

On Money Orders payable abroad the commission is:

If not exceeding \$10	10c.
Over \$10 not exceeding \$20	20c.
" 20 " "	30c.
" 30 " "	40c.
" 40 " "	50c.

For further information see OFFICIAL POSTAL GUIDE.
Post Office Department, Ottawa.
1st November 1889.

NORTH-WEST MOUNTED POLICE**RECRUITS.**

APPLICANTS must be between the ages of Twenty-two and Forty, active, able-bodied men of thoroughly sound constitution, and must produce certificates of exemplary character and sobriety.

They must understand the care and management of horses, and be able to ride well.

The minimum height is five feet eight inches, the minimum chest measurement 35 inches, and the maximum weight 175 pounds.

The term of engagement is five years.

The rates of pay are as follows:—

Staff-Sergeants \$1.00 to \$1.50 per day.
Other Non-Com. Officers . . 85c. to 1.00 do

	Service pay.	Good conduct pay.	Total.	
1st year's service..	50c.	—	50c.	per day.
2nd do ..	50c.	5c.	55c.	do
3rd do ..	50c.	10c.	60c.	do
4th do ..	50c.	15c.	65c.	do
5th do ..	50c.	20c.	70c.	do

Extra pay is allowed to a limited number of Blacksmiths, carpenters and other artisans.

Members of the force are supplied with free rations, a free kit on joining, and periodical issues during the term of service.

Applicants may be engaged at the Immigration office, Winnipeg, Manitoba; or at the Headquarters of the Force, Regina N. W. T.

**CANADA ATLANTIC
RAILWAY.**

The shortest passenger route between
OTTAWA and MONTREAL
and all points east and south.

The only road in Canada running trains lighted with electricity and heated by steam from the engine. Luxurious Buffet Pullman Palace Cars on all trains between Ottawa and Montreal. Only line running through Sleeping Cars between

Ottawa, Boston and New York
And all New England and New York points.

Baggage checked to all points and passed by Customs in transit.

For Tickets, Time Tables and information apply to nearest agent or to S. EBBS, City Passenger Agent, 24 Sparks St., OTTAWA.

GEO. H. PHILLIPS Gen. Agent,
VALLEYFIELD.

J. W. DAWSEY,
136 St. James St., MONTREAL

Or at 260 Washington St., Boston, and
317 Broadway, New York.

E. J. CHAMBERLIN, C. J. SMITH,
General Manager, General Passenger Agent.
General Offices, Ottawa.