

## DOMINION ATLANTIC RAILWAY & STEAMERS

Kentville Time Table effective Nov. 2nd 1916. (Service daily except Sundays)

### LEAVE

Express for Halifax..... 6:00 a.m.  
Express for Yarmouth..... 10:24 a.m.  
Express for Halifax..... 4:05 p.m.  
Accom for Middleton..... 3:05 p.m.  
Accom for Kingsport..... 11:00 a.m.  
Accom for Kingsport..... 4:10 p.m.  
Accom for Kingsport (Sat. only) 6:20 p.m.

### ARRIVE

Express from Halifax..... 10:14 a.m.  
Express from Yarmouth..... 3:50 p.m.  
Express from Halifax..... 6:15 p.m.  
Accom from Windsor..... 2:45 p.m.  
Accom from Kingsport..... 8:45 a.m.  
Accom. fr. Kingsport, Sat. only 6:00 p.m.

### Midland Division

Trains of the Midland Division leave Windsor daily (except Sunday) for Truro at 7:05 a.m. 5:15 p.m. and from Truro for Windsor at 6:40 a.m. 2:30 p.m. and connect at Truro with trains of the Intercolonial Railway and at Windsor with express trains to and from Halifax and Yarmouth.

Buffet parlor cars run daily (except Sunday) on express trains between Halifax and Yarmouth.

### Canadian Pacific Railway

St. John and MONTREAL (via Digby) (Sundays excepted)  
S. S. EMPRESS leaves St. John 7:00 a.m., arr. Digby 12:00 a.m., Leave Digby 2:00 p.m., arr. St. John 5:00 p.m. Making connections with the Canadian Pacific trains at St. John for Montreal and the West.

Trains run on Atlantic Standard time

### BOSTON SERVICE

Steamers of the Boston and Yarmouth S. S. Co. sail from Yarmouth for Boston after arrival Express train from Halifax and Truro, Wednesday and Saturday.

R. U. PARKER, Genl. Passenger Agent  
GEORGE E. GRAHAM, General Manager

### Yarmouth Line

Steamship Prince Arthur leaves Yarmouth Wednesdays and Saturdays at 5 p.m. (Atlantic time)

Return: leaves Boston Tuesdays and Fridays at 1:00 p.m.

Connection made with trains of the Dominion Atlantic Railway and Halifax and South Western Railway to and from Yarmouth.

### Tickets and Staterooms at Wharf Office.

### Boston & Yarmouth S. S. Co., Ltd.

A. E. WILLIAMS, Agent, Yarmouth, N. S.

For Sale—1 double seated Pung Sleigh. Apply to James Rooney.

### CAN FIRE 1,500 SHOTS A MINUTE

New York—The New York Sun says: Satisfactory test was made yesterday afternoon on a machine gun capable of firing 1,500 shots a minute and so easily handled that a little girl can manipulate it. The test was made for the benefit of representatives of the British and French governments, for whom the new deathdealer is intended. The gun is of a new pattern, manufactured by the Marlin Arms Company, of New Haven, Conn., Edgar Park, vice president of the concern explained to inquiries that his plant is capable of turning out such weapons at the rate of 200 a day. The gun is fed from a long tape to which cartridges are attached passing through the weapon from side to side while the gun is in action. The cartridge used is of .762 millimetres diameter. The weapon has a range of 3,000 yards, and is said to be particularly well adapted for use on aeroplanes, for its weight is only about that of the average rifle.

The Province of Quebec will abolish the bar after May 1st next. On that date the Gothenburg, or cafe system will be in vogue.

### THE NECESSITY FOR GREATER ECONOMY

The Bank of Commerce, in its commercial letter for November, has the following timely and most opportune cautions:

If the people as a whole understood clearly why it was necessary to economize, there would be a much greater response to the appeals of the leaders of the nation. The enormous purchases made by the Allies from our manufacturers have entailed the payment of high wages to industrial workers and thus, from the very necessities of the Empire, the latter find themselves possessed of a greater purchasing power than at any previous time. This power can be used either for selfish gratification or for to win the war. If the former—the selfish—course is followed it is practically frittering away the resources of the Empire. On the other hand, the thoughtful patriot will save every cent to lend to his country. Those with the habit of spending freely are apt to look with aversion upon those with a disposition to save, but for the time being those who save are the ones who forget the "silver bullets" that are the "silver bullets" that now more than ever necessary.

### HYMENEAL

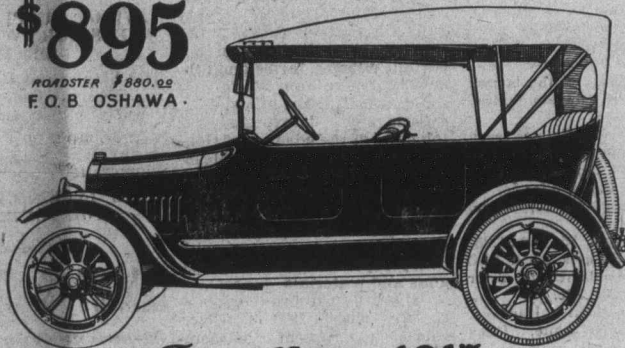
The home of Mr. and Mrs. Robert H. Hardwicke, "Albion Vale," was the scene of a pretty wedding on Thursday morning, Nov. 30th, when their only daughter, Helen Macarthur, was united in marriage to Mr. John Lawson Newcombe Rand, of Woodville, Kings Co., N. S. To the strains of Mendelssohn's Wedding March rendered by David I. Wade, the bride entered the room with her father and stood under a beautiful arch of evergreen and white chrysanthemums, the Rev. W. H. Langille, of St. George's Methodist Church officiating. The bride looked charming in a dress of white silk, georgette crepe and lace trimmings, veil and orange blossoms, carrying a bouquet of white roses and carnations. After the ceremony and congratulations, a dainty wedding breakfast was served, and amid showers of confetti the happy couple left on the eastbound train for Halifax and other towns. The bride's going away suit was of navy gabardine with beaver trimmings. She also wore beaver furs, the gift of the groom. Many beautiful gifts were received including gold, silver, cut glass, china and linen, also cheques from parents of the both.

"Digby has fortunately escaped another hanging affair," says a despatch. How many, then, does this make that Digby has escaped?

# The Challenge in 1917 Motor Car Values

\$895

ROADSTER \$880.00 F. O. B. OSHAWA



## THE NEW 1917 McLAUGHLIN-BUICK Four

Compare these outstanding features with other cars at the price.

- |                           |  |
|---------------------------|--|
| 35 HORSE POWER            | McLAUGHLIN-BUICK VALVE-IN-HEAD ENGINES |
| 106 INCH WHEEL BASE       | GENUINE LEATHER UPHOLSTERING           |
| 4 INCH TIRES              | FULL "U" DOORS—EXTRA WIDE              |
| DELCO STARTING & LIGHTING | TONNEAU SEAT 48 INCHES WIDE            |

Send for detailed Specifications to **THE McLAUGHLIN MOTOR CAR CO.** OSHAWA, Ontario

On Show at PARKERS, Kentville

AGENTS FOR KINGS COUNTY

A. T. McConnell, Wolfville G. W. Parker, Kentville.

### BORN

At Aylesford, on Saturday, Dec. 9th, to Mr. and Mrs. Frank W. Graves, a son.

At Aylesford, on Saturday, Dec. 9th, to Mr. and Mrs. Lamert Patterson, a daughter.

At Berwick, on Friday, Dec. 8th, to Mr. and Mrs. Henry G. Wentzell, a daughter.

Wanted—Two or three rooms for light housekeeping. Address P. O. Box 240. sw 31 x

### FOR SALE

About 125 acres land at the foot of the South Mountain, in Waterville, 7 acres in orchard cuts 12 tons hay, great chance for improvement. NATHAN BEST, of

### To Further Restrict Use of Liquor in France

Paris, Dec. 13—Premier Briand announced to the chamber of deputies today he had decided to ask parliament to enact legislation providing for a further restriction in the consumption of alcoholic beverages throughout France.

Minard's Liniment Cures Colds, Ac



From the Official Moving Pictures of the Battle of the Somme, to be shown at Nickel Theatre Dec. 21 and 22

A BIG BRITISH GUN ON THE SOMME FRONT

OFFICIAL PHOTOGRAPH. CROWN COPYRIGHT RESERVED.