

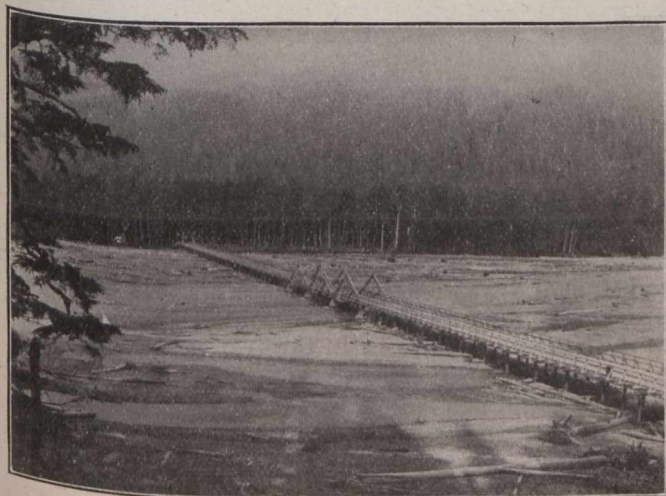
neous rocks occur but their relation to the ore bodies has not been determined. As the proximity of the Coast Range intrusives would suggest, the metamorphism of the sedimentaries is universal. No fossils have been found.

Discoveries made thus far indicate that the predominate products of the district will be silver and lead, but deposits of gold and copper are also found. The



Miner's Cabin.

most notable exception to the ordinary type of deposit is the "Red-Cliff" on American Creek, a large irregular deposit of iron and copper-iron sulphides with primary gold values. The Red Creek Mining Company after proving the existence of a large ore body is at present engaged in driving a long crosscut at a low level to work as a working adit. A compressor and machine drills are being installed. A very promising cop-



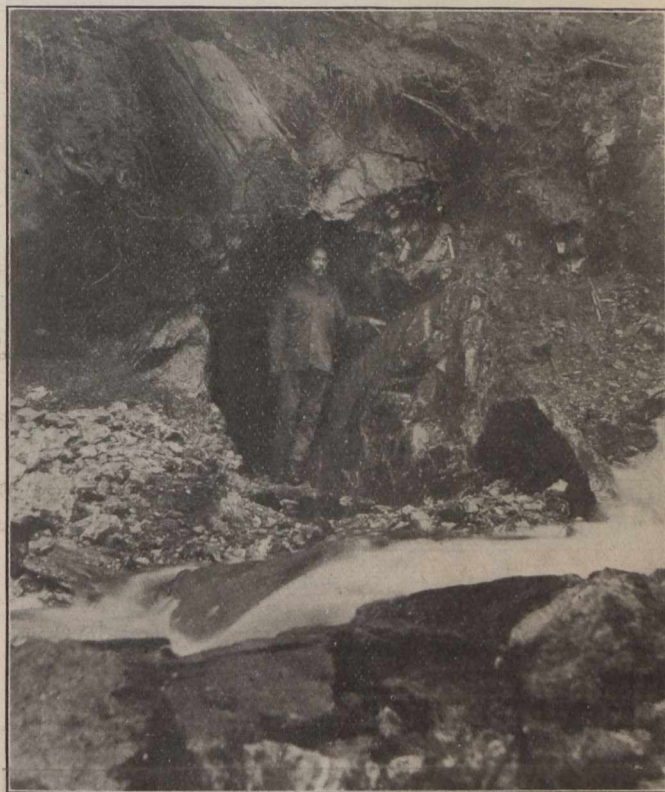
Bridge on Bear River.

per prospect is found on M. K. Rodgers' Northern Belle claims situated on the Middle Fork of Glacier Creek. Other copper locations have been made near the head of Bear River but little development work has been done.

Five miles above the "Red Cliff" on American Creek lies the Stewart property to which previous reference has been made. The mineral deposits on these claims have been described as a succession of sheer zones. At the tunnel the stains of copper carbonate and the absence of pyrite and limonite are conspicuous

features. The mineralization consists of galena and other argentiferous sulphides in a quartz gangue. High silver values are reported. This property has attracted much attention among mining men for a number of years. A company financed by D. D. Mann and associates, of Toronto, will begin its exploitation next summer.

But by far the greatest amount of prospecting and development work has been done on Glacier Creek. In this section the Portland Canal Mining Co. has opened up a strong vein following the formation along the contact between a sill of porphyry and the slate. The dip is southwest from 20° to 40°. Development has been progressing for several years on this property and there is a large quantity of ore blocked out and



Tunnel on Sunbeam Claim—Stewart Mining and Development Co.

ready for stoping. A mill and aerial tramway are in course of construction. The same vein or vein zone has been traced from the "Jumbo" and "Eurus" on the southeast to the works of the Stewart Mining and Development Co. on the northwest, a distance of 3 miles. On the latter property three parallel veins outcrop at an altitude of about 1100 feet. A tunnel is being driven on the "George E" to crosscut these veins at a depth of 180 feet. Two of the veins have been encountered thus far. The mineralization along this vein zone consists of galena, pyrite, zinc blende, argentite and native silver in a gangue of quartz and brecciated slate. Parallel blanket veins in similar geologic conditions and with similar minerals and gangue occur over a considerable area.

On the Middle Fork of Glacier Creek a series of veins occur that cut the formation at varying angles and dip vertically or nearly so. The usual vein minerals are galena, blende, pyrite, arsenopyrite, stibnite, and grey copper in a gangue of barite, quartz and sericitized rock. The Columbia-Evening Sun vein is a conspicuous example of this class. The Excelsior-Eagle