



"CONCRETE!"

What do you know about it?

The more you know about the uses of concrete, the more money you can make out of farming.

Here's a free book that tells all about it—in plain, non-technical language, illustrated with many photographs and working plans.

With it, you can quickly become expert in the use of concrete. You can build anything from a sidewalk to a silo—and everything you build of concrete adds permanent value to your farm property.

Check the coupon opposite the uses in which you are most interested, and send with your name and address to

Canada Cement Co. Limited
52 Herald Building, Montreal

SEND ME INFORMATION
ON SUBJECTS MARKED X

FLOORS
CONCRETE BLOCKS
SILOS
CARAGES
TROUGHS AND TANKS
DAIRY HOUSES
BARN
FENCE POSTS
ROOT CELLARS
ROADS
SIDEWALKS
FOUNDATIONS
WHAT THE FRENCH CAN DO WITH CONCRETE



OF INTEREST TO

Farmers and Investors

The undersigned have for sale some excellent farm lands, which have come into their hands for realization either by Trust Deed, Will, Administration or Foreclosure, and which are really excellent bargains, situated in all three Prairie Provinces, obtainable on terms that are within anyone's reach. With wheat at nearly \$2.00 per bushel and all other farm products correspondingly high and likely to remain so for an indefinitely long period, the time to buy is NOW. Send for list when you will be at once interested. You may buy from a quarter section to a thirty thousand acre block through which a new railway is now being built from Winnipeg all convenient to railway, market, church and school.

The Standard Trusts Company
346 Main Street
Winnipeg

Buy The Best Plow Shares

All Shares guaranteed. They are made of the best crucible steel. Prices subject to change without notice. If money is sent in good faith goods will be shipped.



Prices of Shares			
12 inch Shares, each	\$2.45	15-16 inch Shares, each	\$2.90
13-14 inch Shares, each	\$2.70	18 inch Shares, each	\$3.10

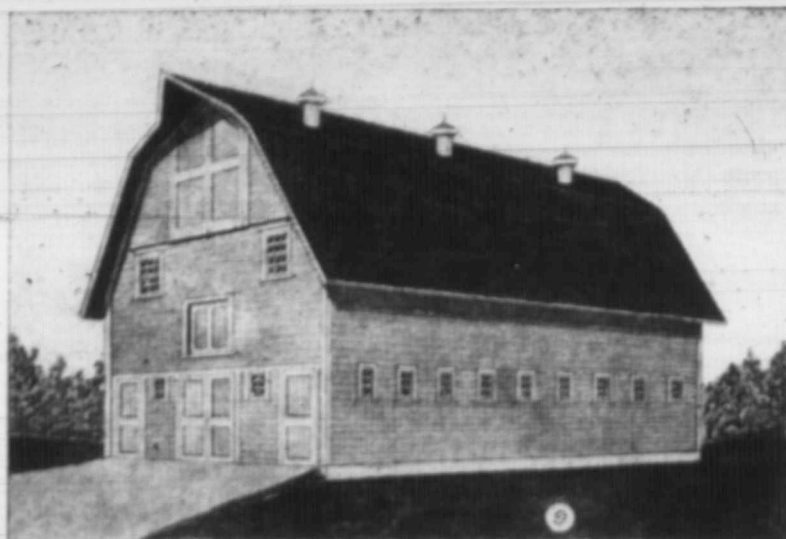
Give number and letters stamped on share, and name of plow. We do the rest.

GUARANTEED ECLIPSE PLOW

Sulky		Gang	
1915 Prize Winner at Plowing Matches	12 inch	12 inch	\$81.00
Price	\$45.00	14 inch	\$83.00

Write for Our Bargain Sheet

THE CANADIAN STOVER GASOLINE ENGINE CO. Ltd.
BRANDON, MANITOBA



A Barn for the Diversified Farm

Guide Barn Plan No. 9 is suited to the needs of the farmer who keeps considerable stock for which he desires comfortable, well lighted quarters. It has also the advantage of being neat and commodious in appearance adding dignity to any farm. It provides stall room for 11 horses and 16 head of tied cattle, besides two box stalls for horses and two boxes which may be used for calves or for grown cattle.

The length is 80 feet and the width 38 feet. This width provides for 15 feet between partition and wall for the horses and 12 feet for the cattle row, leaving 10 feet for a drive and feed alley between. The stock all head toward this driveway, which is one of the most desirable features of the barn. It is just the place to run the team into on a wet or windy day in summer or a cold or stormy day in winter. They can be unhitched in comfort and can go direct to their places without having to go outside. All the stock is fed from this alley and in a crowded time

upper part is used for hay and oat bins. A door is provided in the gable for taking in hay by means of a hay fork. There are just enough windows to light the upper part but abundance of sunshine is admitted to the stables. Large sliding doors are placed at each end of the driveway and swing doors at the ends of the stables.

The standard building material is lumber, and naturally the foregoing specifications as well as the estimate of cost have been based on this standard. Many excellent building materials are at present on the market, any reliable make of which may well be used. For instance, outside, metal siding, concrete, brick, etc., may be used instead of lumber, and for the roof, metal shingles or prepared roofing materials, the basis of which is felt and asphalt.

Estimate of Cost

Prices on lumber and building materials are changing all the time, so that the following estimate is only good



some of them can be turned into it so that it is far from being waste space. Another important consideration is that it provides for a clear division between the cows and horses. Horses are better if their stable is kept free from the odors of cattle. The driveway, with doors on each end make it practically impossible for the air the horses breathe being tainted from the cattle stalls.

Another valuable feature of this barn is the large amount of box stall room. Box stalls are always coming in handy in the barn. For a sick horse or cow they are indispensable. For mares about to foal or cows about to freshen they are also a necessity. When not needed for these purposes they can be used for young stuff. The cattle boxes may be arranged for calf pens and used mainly for calves, only being utilized for grown stock in case of emergency.

On the horse side are four double and three single stalls, three one of which is the passage from the drive alley. There is a manure carrier shown. This saves much labor and tends to keep the manure pile away from the wall. In the cattle section are seven double stalls, 6 ft. 6 in. wide and two single stalls 3 ft. 3 in. wide as well as a passage to the feed alley.

The stable is 8 feet from floor to ceiling. The walls of the barn are 18 feet high. The roof is hipped and the ridge is 38 feet from the foundation. The

for prices at this date. Lumber is figured basis 40 cent freight rate and remaining materials f.o.b. Winnipeg.

Lumber, f.o.b. 40 cent rate, board feet	38,000, 36,000
shingles, f.o.b. 40 cent rate	\$1,132.00
Cement for foundations, f.o.b. Winnipeg	130.00
Paint, f.o.b. Winnipeg	75.00
Millwork, f.o.b. Winnipeg	32.00
Hardware, paper, nails, etc.	85.00
Hay Carrier, f.o.b. Winnipeg	63.00

Total \$1,517.00
Complete working drawings for Guide Barn No. 7 can be obtained for \$1.50 from Farm Buildings Department, Grain Growers' Guide, Winnipeg.

The attendant should see that the newly born foal is freed from the membranes and that breathing is established.

The navel cord of the newly born foal offering easy access to the body for disease germs should be protected and treated with an antiseptic solution.

When conditions are favorable and normal, the act of foaling usually occupies less than half an hour.

In case of wrong presentation, it is necessary to ascertain the exact position of the foal, and adjust it before attempting to secure delivery.