

**CHURCH DAY SCHOOL**  
Major Street, Toronto  
**SISTERS S. JOHN THE DIVINE**  
KINDERGARTEN and  
ELEMENTARY DEPARTMENT

**Bishop Bethune**  
College, Oshawa, Ontario

UNDER THE CHARGE OF  
The Sisters of St. John the Divine  
Visitor, the Lord Bishop of Toronto.  
Preparation for the University.

For terms and particulars apply to the  
SISTER IN CHARGE, or to  
The Sisters of St. John the Divine  
MAJOR STREET, TORONTO

**Trinity College School,**  
PORT HOPE, Ont. Founded 1865.  
Next term begins April 12th.

This is the best term for entering younger boys.  
There are Twenty Bursaries (value \$180 per  
annum) for the sons of Canadian Clergy.

For Calendar and all particulars apply to  
Rev. OSWALD RIGBY, M.A., LLD., Head Master.

**A Telegraph Operator**  
has pleasant work, gets good wages and  
rises to the highest positions. We teach  
it thoroughly and quickly, also railroad  
rules, signals, etc., and start our Graduates  
in telegraph service. Our school is recom-  
mended by telegraph operators and railroad  
officials. Write for terms and prospectus.

**CANADIAN SCHOOL OF TELEGRAPHY**  
Cor. Queen and Yonge Streets, Toronto.

**SPRING TERM FROM APRIL 5th.**  
A large number of new students will commence  
work on the above date, but if you cannot arrange  
to enter then you may come in at any time. We  
have no summer vacation. The

**BRITISH AMERICAN**  
*Business College*

Y.M.C.A. BLDG., TORONTO.  
has a reputation for giving the most thorough and  
practical courses in all branches of BUSINESS  
and SHORTHAND work. If interested in an  
education THAT WILL PAY, write for free  
information. W. BROOKS, Principal.

**ST. ALBAN'S CATHEDRAL SCHOOL**  
Toronto—Incorporated  
For BOARDERS and DAY BOYS.  
Chairman—His Lordship the Bishop.  
A thoroughly qualified staff. For prospectus address  
M. E. MATTHEWS, Principal.

**CHURCH BRASS WORK**  
Eagle and Rail Lecterns, Altar Vases, Ewers, Candi-  
sticks, Altar Desks, Crosses, Vesper Lights, Altar  
Rails, Etc. Chandeliers and Gas Fixtures.  
**CHADWICK BROTHERS**  
(Successors to J. A. Chadwick).  
MANUFACTURERS  
182 to 190 King William St. HAMILTON, ONT.

**COWAN'S** Healthful  
and Nutritious  
**Hygienic**  
**Cocoa...**  
Sold in 1/2 lb., 1 lb., and 1 lb. Tins only  
Absolutely Pure.

FAVORABLY KNOWN SINCE 1826. **BELLS**  
HAVE FURNISHED 35,000  
CHURCH SCHOOLS & OTHER PUREST BEST  
**MENEELY & CO.** GENUINE  
WEST-TROY, N.Y. BELL-METAL  
CHIMES, ETC. CATALOGUE & PRICES FREE.

**Church**  
**Brass Work**  
MEMORIAL  
BRASSES  
RAILS, VASES  
**PRITCHARD ANDREWS**  
CO. OF OTTAWA, LIMITED  
135 SPADINA ST. OTTAWA



**"Glen Mahur"**  
RESIDENTIAL AND DAY SCHOOL  
FOR GIRLS  
651 SPADINA AVENUE, TORONTO  
Thorough English Course. Individual Atten-  
tion. Pupils prepared for the Universities  
and for Examinations in Music and Art.  
Large staff of Resident and Visiting Teachers.  
MISS VEALS, Lady Principal.

**WESTBOURNE School**  
for Girls  
340 Bloor Street W., - TORONTO, Can.  
Re-opens September 10th, 1903.

A Residential and Day School, well appointed, well  
managed and convenient. Specialists in each de-  
partment. Affiliated with the Toronto Conservatory  
of Music. Dr. Edward Fisher, Musical Director;  
F. McGillivray Knowles, R.C.A., Art Director. For  
announcement and information, address the principals.  
MISS M. CURLETTE, B.A.  
MISS F. E. DALLAS, Mus. Bach

**ST. MONICA'S**  
Residential and Day  
School for Girls.  
170 Bloor St. W., - - Toronto  
Re-opens Thursday, Sept. 10th.

Thorough course in English, Languages, Music,  
Art, Elocution and Domestic Science, and Physical  
Culture. Prepares for University and Departmental  
Examinations.  
Kindergarten and Primary Departments.  
Teachers, Specialists in each Department.  
A Home School. Extensive Grounds.  
For Prospectus apply to  
**MISS PHILLPOTTS,**  
LADY PRINCIPAL.

**Edgehill, Church School**  
for Girls  
WINDSOR, NOVA SCOTIA  
INCORPORATED 1891.

The Bishop of Nova Scotia, Chairman Board of  
Trustees. The Bishop of Fredericton, member  
of Board of Trustees, ex-officio.  
Miss Lefroy, of Cheltenham Ladies' College, England,  
Principal, assisted by Eleven Resident Experienced  
Governesses from England, (five of whom are special-  
ists in the Music and Art Departments), and one non-  
resident Instructor, Housekeeper, Matron and Nurse.  
Extensive buildings, with capacity for 100 Resi-  
dents; Heated by Hot Water, Lighted by Electricity.  
Grounds covering eight acres, with Lawns for Tennis,  
Croquet, Basket Ball, Hockey, &c. School Dairy and  
Laundry. Preparation for the Universities.  
LENT TERM begins on Wednesday,  
January 13th, 1904.  
For Calendar apply to DR. HIND.

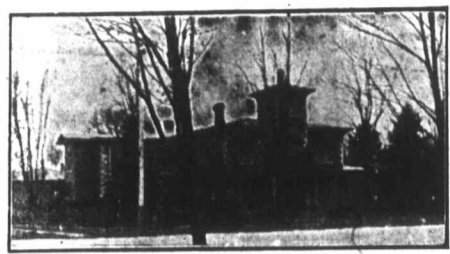
**School of the Sisters of the**  
**Church,** 106 Beverley Street,  
TORONTO, Ont  
Boarding and Day School for Girls.  
Terms Moderate. Vacancies for Boarders.  
ADDRESS. — SISTER IN CHARGE.

**LUXFER ELECTRO-GLAZED**  
**Church Window**  
**Decorative Glass.**  
WRITE FOR PRICES.

**Luxfer Prism Company, Limited.**  
100 King Street West, Toronto.

**HARRINGTON'S**  
**TUBULAR**  
**Chime Bells**  
Lighter in Weight,  
Sweeter in Tone,  
Cheaper in Price.  
Than the ordinary bell  
COVENTRY, ENG.  
**CASTLE & SON**  
20 University St.,  
Montreal Agents

**J. C. SPENCE & SONS**  
ARTISTS IN STAINED GLASS  
37 1/2 Bleury St., - Montreal.  
ESTABLISHED 1856.  
Church work of all kinds. Memorial  
windows and leaded glass a specialty.  
Churches decorated. Texts and scrolls  
supplied.



**ST. AGNES' SCHOOL.**  
A Church School for Girls,  
ELMPOOL, BELLEVILLE.  
Patron—The Lord Bishop of Ontario.  
Prepares for Matriculation. Conservatory  
of Music Examinations held at the School.  
Courses in Art, Physical Culture, Domestic  
Science. Beautiful building with all modern  
improvements—extensive grounds. TERMS  
MODERATE. For prospectus apply to  
MISS F. E. CARROLL.

**HIGHER EDUCATION FOR GIRLS**  
**The Bishop Strachan School**  
(Thirty-seventh Year)  
For Calendar apply to Miss ACRES, Lady  
Principal, Wykeham Hall, Toronto.  
**The Parkdale Church School**  
**FOR GIRLS—151 Dunn Ave.**  
**KINDERGARTEN—FOR BOYS**  
**and GIRLS**  
For Calendar apply to  
MISS MIDDLETON, Lady Principal.

**MEMORIAL WINDOWS.**

Our productions are  
extensively adopted.  
**Robert McCausland,**  
Limited  
86 Wellington St. West, TORONTO



**CHURCH BRASS WORK** of every description  
made to order on shortest notice. Designs furnished  
and satisfaction guaranteed.  
**KEITH & FITZSIMONS, LIMITED**  
111 King Street West, Toronto.

**STAINED GLASS**  
**MEMORIAL ::::**  
**WINDOWS**  
**BRASSES AND**  
**DECORATIONS**  
**Castle & Son**  
20 UNIVERSITY ST., MONTREAL

**MEMORIALS**  
**AND**  
**DOMESTIC**  
**GLASS**  
**DOMINION STAINED GLASS**  
Est. 1881  
34 RICHMOND ST. E. TORONTO.  
+ Macky & Booth Props.

**JONES AND WILLIS**

Church Furniture Manufacturers  
Metal, Wood, Stone  
and Textile Fabrics.  
STAINED GLASS ARTISTS  
43 Great Russell Street, LONDON, ENG  
Opposite British Museum.  
Also at Birmingham and Liverpool



THE CANADIAN NORTH-WEST  
**HOMESTEAD**  
REGULATIONS.

Any even numbered section of Dominion Lands in  
Manitoba or the North-West Territories, excepting  
8 and 26, which has not been homesteaded, or re-  
served to provide wood lots for settlers, or for other  
purposes, may be homesteaded upon by any person  
who is the sole head of a family, or any male over 21  
years of age, to the extent of one quarter section, of  
160 acres, more or less.

ENTRY.  
Entry may be made personally at the local land  
office for the district in which the land to be taken is  
situated, or if the homesteader desires, he may, on  
application to the Minister of the Interior, Ottawa,  
the Commissioner of Immigration, Winnipeg, or the  
local agent for the district in which the land is situated,  
receive authority for some one to make entry for him.  
A fee of \$10.00 is charged for a homestead entry.

**HOMESTEAD DUTIES.**  
A settler who has been granted an entry for a  
homestead is required by the provisions of the Do-  
minion Lands Act and the amendments thereto to  
perform the conditions connected therewith, under  
one of the following plans—

(1) At least six months' residence upon and cul-  
tivation of the land in each year during the term of  
three years.

(2) If the father (or mother, if the father is de-  
ceased) of any person who is eligible to make a home-  
stead entry under the provisions of this Act, resides  
upon a farm in the vicinity of the land entered for  
by such person as a homestead, the requirements of  
this Act as to residence prior to obtaining patent may  
be satisfied by such person residing with the father  
or mother.

(3) If a settler has obtained a patent for his home-  
stead, or a certificate for the issue of such patent,  
countersigned in the manner prescribed by this Act  
and has obtained entry for a second homestead, the  
requirements of this Act as to residence prior to ob-  
taining patent may be satisfied by residence upon the  
first homestead, if the second homestead is in the  
vicinity of the first homestead.

(4) If the settler has his permanent residence upon  
farming land owned by him in the vicinity of his  
homestead, the requirements of this Act as to resi-  
dence may be satisfied by residence upon the said  
land.

The term "vicinity" used above is meant to indi-  
cate the same township or an adjoining or cornering  
township.

A settler who avails himself of the provisions of  
Clauses (2), (3) or (4) must cultivate 30 acres of his  
homestead, or substitute 20 head of stock, with build-  
ings for their accommodation, and have besides to  
acres substantially fenced.

Every homesteader who fails to comply with the  
requirements of the homestead law is liable to have  
his entry cancelled, and the land may be again  
thrown open for entry.

**APPLICATION FOR PATENT.**  
Should be made at the end of the three years, before  
the Local Agent, Sub-Agent, or the Homestead  
Inspector. Before making application for patent,  
the settler must give six months' notice in writing to  
the Commissioner of Dominion Lands, at Ottawa,  
of his intention to do so.

**INFORMATION.**  
Newly arrived immigrants will receive at the Immi-  
gration Office in Winnipeg or at any Dominion Lands  
Office in Manitoba or the North-West Territories,  
information as to the lands that are open for entry,  
and from the officers in charge, free of expense, ad-  
vice and assistance in securing land to suit them.  
Full information respecting the land, timber, coal  
and mineral laws, as well as respecting Dominion  
Lands in the Railway Belt in British Columbia, may  
be obtained upon application to the Secretary of the  
Department of the Interior, Ottawa, the Commis-  
sioner of Immigration, Winnipeg, Manitoba, or to  
any of the Dominion Land Agents in Manitoba or  
the North-West Territories.

**JAMES A. SMART,**  
Deputy Minister of the Interior.

N.B.—In addition to Free Grant Lands to which  
the regulations above stated refer, thousands of acres  
of most desirable lands are available for lease or  
purchase from railroad and other corporations and  
private firms in Western Canada.

**J. YOUNG**  
THE LEADING Undertaker and  
**359 YONGE ST. Embalmer**  
Telephone 679

Vol  
WE  
for o  
BEI  
348  
WANI  
at once  
man," C  
WANI  
County,  
etc., ap  
Louisbo  
WANI  
Priest's  
August  
horse.  
Box 102  
Free I  
Bible  
C  
THE  
Objec  
by supp  
Sunday  
Literatu  
Grants.  
Forms  
REV. A.  
\$4.5  
We r  
leader  
of suit  
green,  
red and  
is wool  
suit. W  
offer it  
factory  
hundred  
skirt is  
of the g  
seams  
stitches  
canvas.  
The e  
back, w  
full slee  
in good  
cerized  
prefer t  
skirt or  
ed to t  
length  
have th  
with sk  
attache  
suits are  
spring a  
girl to a  
returner  
refunde  
from ne  
seam; a  
around  
Mention  
Sout  
SI  
Made of  
or dark  
skirt. ]  
and two  
with ins  
seams w  
makers,  
our fac  
entirely  
for suit  
Luster,  
\$4.50.