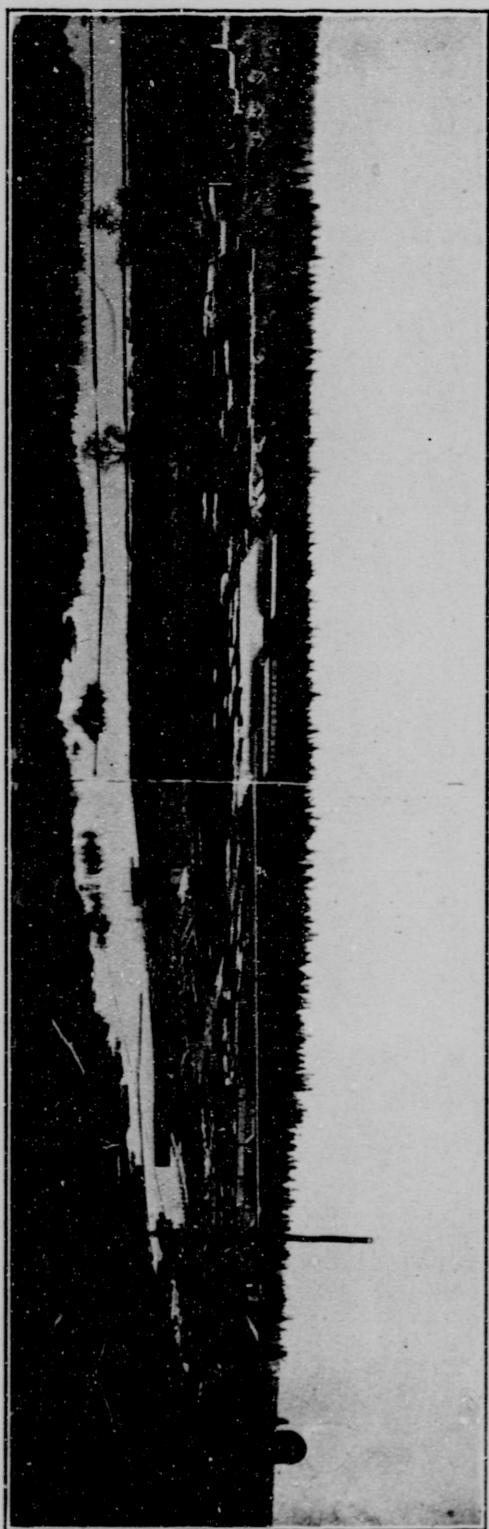


The Giscome Lumber Mill, 25 Miles East of Prince George.



THE a
tigu
Pri
twenty-fi
las fir, sp
tonwood.

There :
Prince G
miles. T
15,000 fee
Grain Gr
largest an
has a cap
lumber p

The lu
1917 was
for 1918
95 per ce
spruce, t
cottonwo

The Fo
fines mor



in the N
the finest
mills to h
in conver
the Gran
sites wit
on the Fr
co River
George.
River, w
ber in th