

back, which is semi tight-fitting, is shaped by a center seam and is joined to the loose fronts which are gathered at the shoulder edges. The fronts are shaped at the top to accommodate an odd rolling collar that is faced with the plain flannel, the facing reversing the fronts and extending to the lower edge. A stay-lining, that reaches only a short distance below the arm-hole, supports the wrapper and holds it in snugly to the figure. The lining is shown in chemisette effect between the collar, but if a low neck be liked the lining may be cut away in front. The large, comfortable sleeves are seamed at the inside and outside of the arm and show gathered fulness at the top. A doubled bias band lengthens the sleeve.

Japanese flannels can be obtained in many beautiful colorings, and a combination will usually be chosen.

We have pattern No. 3756 in five sizes for ladies from thirty to forty-six inches, bust measure. To make the wrapper for a lady of medium size, calls for seven yards and three-fourths of material twenty-seven inches wide, with two yards of goods in the same width for the facing and sleeve bands. Price of pattern, 1s. or 25 cents.

**LADIES' CAPE, WITH REVERS.** (TO BE MADE IN EITHER OF TWO OUTLINES AT THE LOWER EDGE.)

(For Illustrations see Page 303.)

No. 3747.—This cape is again shown at figure No. 133 R in this number of THE DELINEATOR.

Tan kersey was the material used in the present development of the cape, with sable for covering the revers and inside of collar and pink taffeta for lining. The cape is of circular shaping and is seamed at the center of the back, where it is deepest. It is fitted smoothly at the top by two shoulder darts at each side, and below the shoulders it ripples prettily. At the front the cape is turned back in large, round-cornered revers, and the lower corners are gracefully rounded. The cape may be shortened at the front and sides, if desired. A high flare sectional collar completes the neck.

A handsome cape for evening wear may be made of panne *imprimé*, with lace appliqué or chiffon ruchings for decoration.

We have pattern No. 3747 in eight sizes for ladies from thirty to forty-four inches, bust measure. To make the cape for a lady of medium size, calls for three yards and a half of material fifty-four inches wide. Price of pattern, 10d. or 20 cents.

**LADIES' LONG COAT-WRAP, WITH SWEEP.** (TO BE IN EITHER OF TWO LENGTHS AT THE FRONT AND SIDES.)

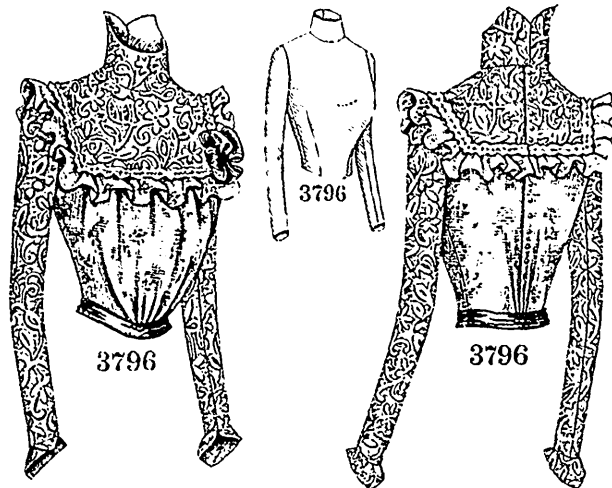
(For Illustrations see Page 304.)

No. 3840.—A handsome wrap for evening or opera wear is

here illustrated developed in light cloth in combination with blue panne overlaid with chamois-colored lace. The wrap hangs loose from the neck and consists of two circular portions that are seamed at the center and fall in flute-like folds below the shoulders. The folds are entirely the result of the shaping, and a yoke-stay, that reaches under the arms holds the back well in place. The fronts are also loosely fitted, and both the back and fronts are extended to form the big flaring collar which reverses the fronts in large, round-cornered lapels. The wrap may be worn open or closed below the lapels with button-holes and two large buttons. The sleeves are quite large and are shaped with an inside seam; they are slightly gathered at the top, and at the wrists they flare perceptibly, deep turn-back cuffs completing them. The wrap is shortest at the front and sides, lengthening gradually toward the back, where it forms a sweep. If preferred, however, the wrap may extend to the lower edge at the front and sides, as shown in the small view.

White, pale-blue and bisquit-colored cloths are the most favored materials for reproducing evening wraps. Light gray and tan are also among the leading colors.

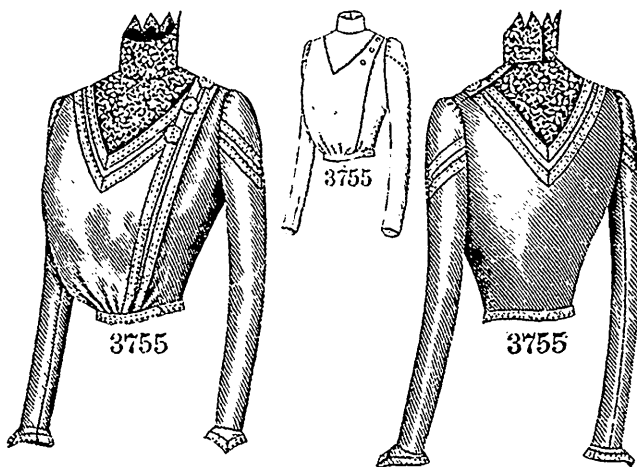
We have pattern No. 3840 in five sizes for ladies from thirty to forty-six inches, bust measure. To make the wrap, long at the front and sides, for a lady of medium size, calls for six yards and three-fourths of material fifty-four inches wide; the wrap shorter at the front and sides needs five yards and a fourth of material fifty-four inches wide, with a yard and a half of velvet twenty inches wide for the cuffs, revers and inside of collar. Price, 1s. or 25 cents.



Front View.

Back View.

**LADIES' BASQUE-WAIST, WITH SEPARATE GUIMPE.** (CLOSED AT THE BACK.)  
(For Description see Page 318.)



Front View.

Back View.

**LADIES' BASQUE-WAIST, CLOSED AT THE LEFT SIDE.**

(For Description see Page 318.)

**LADIES' SINGLE-BREASTED LONG SACK COAT.** (TO BE MADE WITH AN APPLIED BACK-YOKE WITH ONE OR TWO CAPE-COLLARS. AND WITH OR WITHOUT SIDE VENTS.) EQUALLY DESIRABLE FOR CLOTHS AND LIGHT TRAVELING FABRICS.

(For Illustrations see Page 305.)

No. 3793.—By referring to figure No. 134 R in this number of THE

DELINEATOR this coat may be again observed.

The smart long coat is here pictured developed in tan cloth with stitching for a finish. The coat is loosely adjusted in sack style by a center-back seam and side seams that may terminate above deep vents or be continued to the bottom of the garment. The fronts are closed in single-breasted fashion with a fly, and on them are applied fanciful facings that are slashed, and in the openings thus formed side pockets are inserted. Above the closing the fronts are reversed in lapels by the rolling collar, and on the coat are arranged two round-cornered cape-collars made in two sections, which are wide apart at the front. The coat may be made with an oddly pointed yoke applied on the back. A fanciful trimming-band of cloth