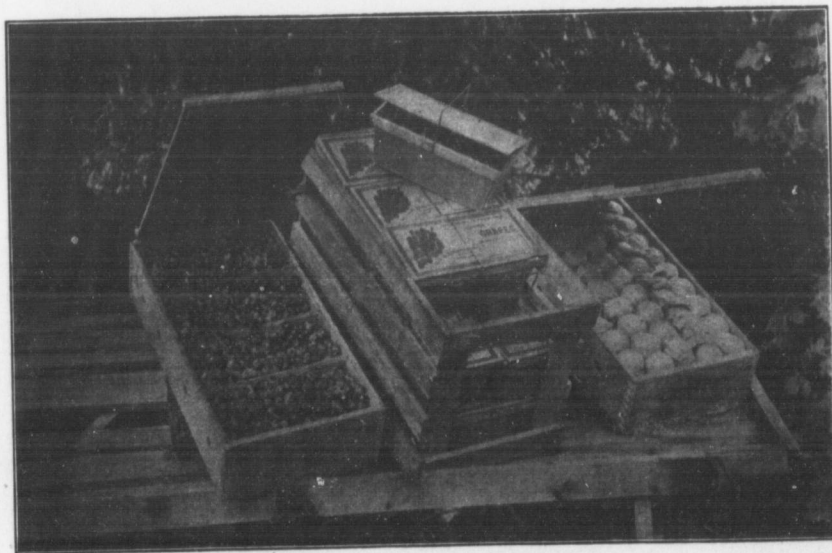


BUSHEL BOXES OF APPLES, HALF BUSHEL BOXES OF PEARS AND PACKAGES OF GRAPES,
PACKED FOR EXPORT FOR ONTARIO DEPARTMENT OF AGRICULTURE.



WILDER GRAPES AND KIEFFER PEARS PACKED FOR EXPORT FOR THE ONTARIO
DEPARTMENT OF AGRICULTURE.

FR

The s
Brantford

W. M.
the time h
and direct
interested
you. We
annual me
Institute o
reckoning
end of the
history wi
has done t
have recei
subjects th
in having
United St
to come b
attention.
We hope
pleasant a

The s
meeting :
J. H. Mo
Secretary
Horticult
Horticult
C. L. Ste
kerton, S

The
Pomologic
the direct
members
meeting a
All t

The
Resol
Fru
New
Mr.
from that
The
mittee on
Mr. Mur