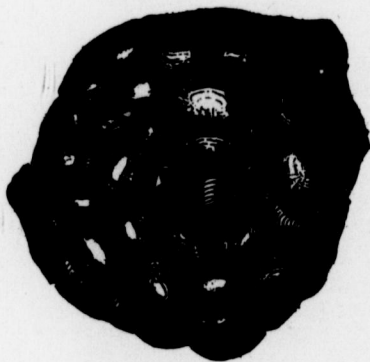
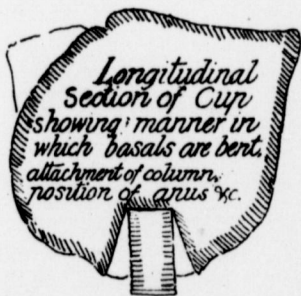
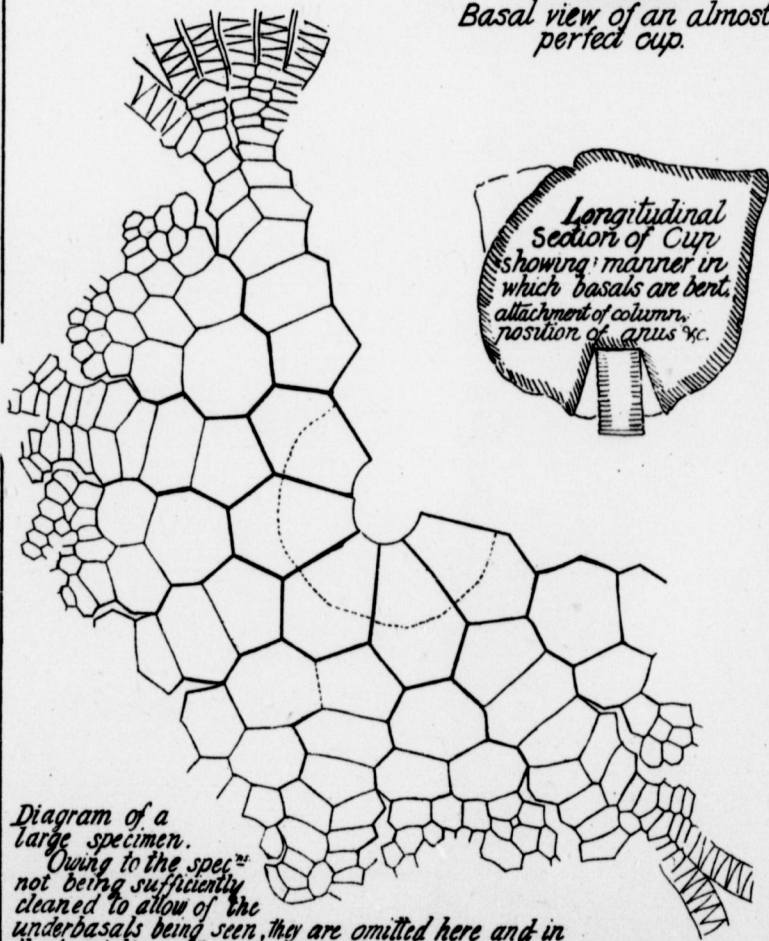


Archæocrinus  
desideratus  
*n. sp.*



*Basal view of an almost perfect cup.*



*Longitudinal section of Cup showing manner in which basals are bent, attachment of column, position of anus &c.*

*Diagram of a large specimen. Owing to the spec<sup>ies</sup> not being sufficiently cleaned to allow of the underbasals being seen, they are omitted here and in the description, although probably present.*