

THE EVENING TIMES, ST. JOHN, N. B., SATURDAY, JANUARY 23, 1909

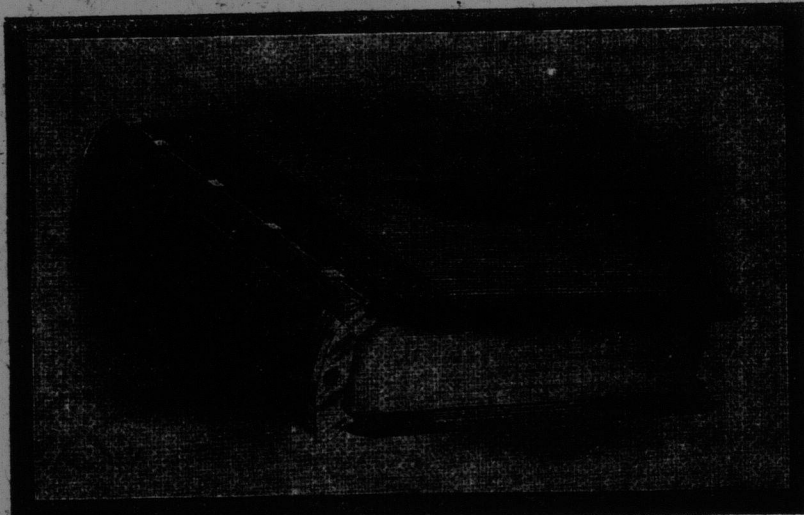
9

LOOSE LEAF LEDGER AND TRANSFERS

MANUFACTURED BY THE TELEGRAPH BINDERY

Every system saves something. The Loose Leaf System saves everything—money, time, labor, worry, confusion, needless expense, night work, and keeps everything running smoothly and the bookkeepers' work always up-to-date.

The Queen Ledger



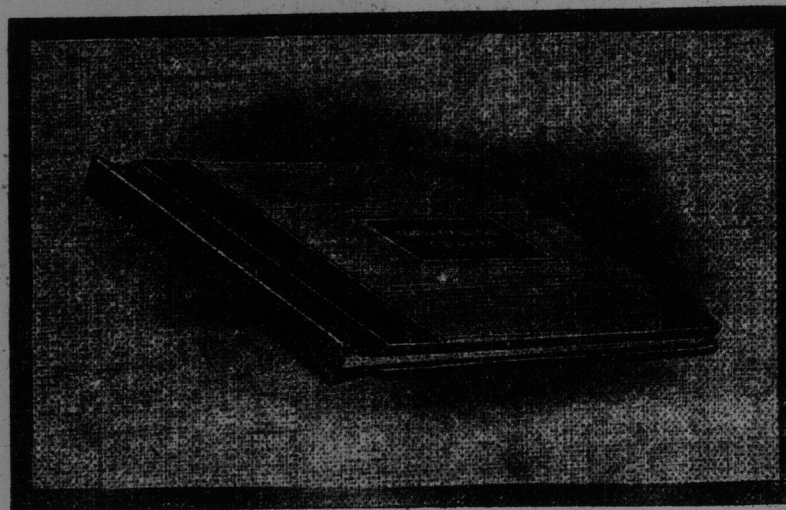
CLOSED.

BEAUTY OF DESIGN—The symmetrical beauty of design and general appearance of the Queen Ledger surpasses that of any other ledger on the market. The outside of cover is on a perfect line with the curve of the side casting. Likewise the inside of cover lines up with binding flanges thus preventing the usual vacant space between the sheets and cover at the hinge.

MATERIAL—The best and highest grade of material is used in the construction of the Queen Ledger. Special aluminum castings having a percentage of silver and other metal alloys producing strength and toughness are especially prepared for our use only by the aluminum foundry. Likewise especially tempered steel for the working parts insures against bending or breaking and only the finest grades of binders' board, leather, corduroy, etc., are used. Covers are thoroughly seasoned and will not warp.

WORKMANSHIP—The Queen Ledger was designed and built by high priced experts of long experience in this particular line. The most careful study is given to even the slightest detail. Each and every part is thoroughly inspected and tested before being used.

The "Perfect" Clip Holder



NOTE THE COVERED SPRING

The Perfect Clip Holder for holding sheets temporarily is in increased demand every year. It is operated by simply bending covers back. Sheets are held in place by a strong steel spring and need not be punched.

They are built for service and will prevent sheets from getting wet or being torn or lost while in use. Made of heavy boards and bound in full canvas. The spring, formed of best tempered steel, holds either one, a dozen or any number of sheets, up to maximum capacity, firmly in position.

Made in two thicknesses, 12 and 14 inch backs. The 12 inch size has capacity of about 25 leaves. The 14 inch size has capacity of about 100 leaves. Hinged on both covers.

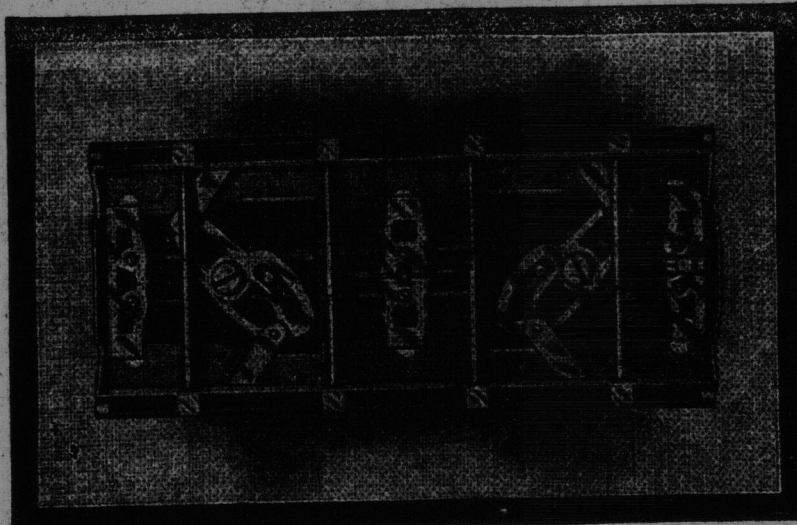
The Perfect Clip Holder, bound in half Russia, covered springs, is an excellent holder for magazines for libraries, etc.

Temporary Holder for Queen and Commercial Ledgers.

Special sizes made to order. Any style binding. Prices furnished upon application.

Stock sizes: 5 1/2x8 1/2, 6x9 1/2, 8 1/2x11, 8 1/2x11 1/2, 9 1/2x12, 8 1/2x14, 8 3/4x11 3/8, 9 1/4x11 7/8, 8 1/4x13 7/8, 10 1/4x10 1/2, 11 1/4x11 7/8, 10 1/2x16, 14x17.

Metal Construction of the Queen Ledger Back



A three piece aluminum round back for Queen Ledger possessing the following points of superiority over all others:

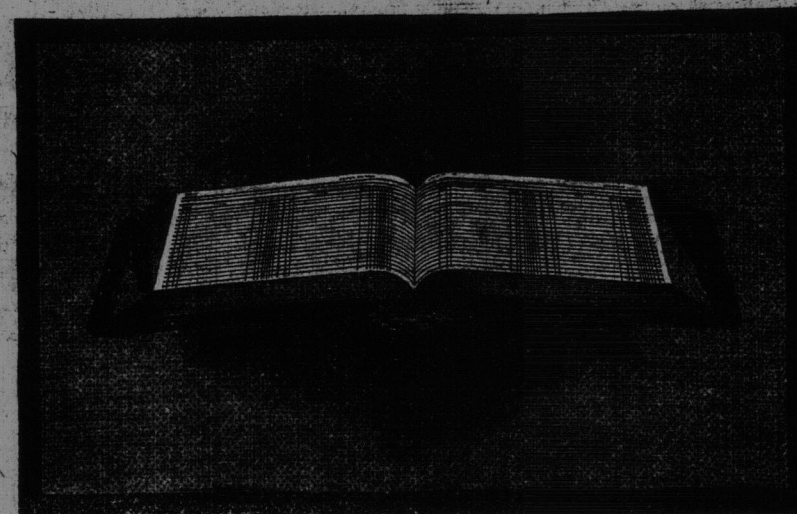
1st—Thickness and shape of aluminum castings designed to secure the greatest possible strength with least possible weight, combined with symmetrical beauty of appearance.

2nd—Mechanical construction of the metal working parts, which are made of oil tempered and case hardened steel, designed to secure the greatest possible durability with least liability of getting out of order.

3rd—The greatest possible expansion (over 100 per cent) with fewer turns of the key, adjusted to sacrifice rapidly for strength as the back closes and vice versa as the back expands.

4th—Braced at both ends and centre. Posts are firmly imbedded in side castings and secured by a steel rod passing through them the entire length of back. The posts telescope each other 11-16 inches when fully expanded, affording extreme rigidity.

The Queen Ledger



OPENED

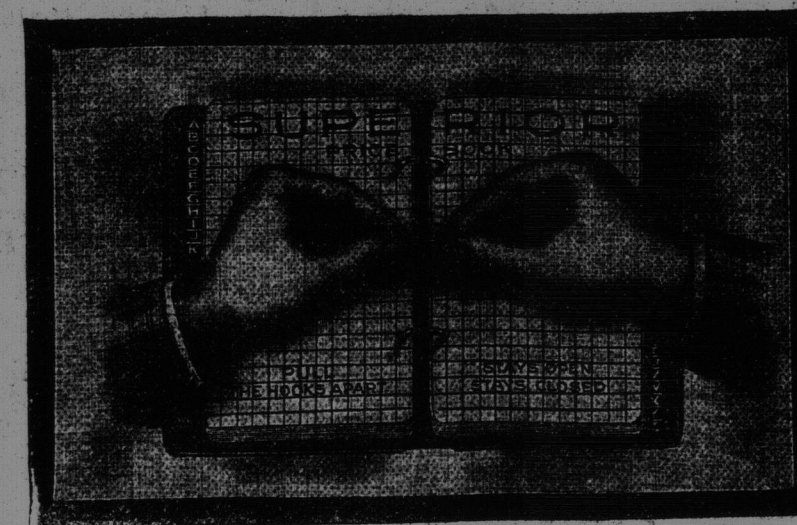
FLAT OPENING—The distance from the sheets to the desk is less on the Queen Ledger than any other and the back, rotating from side to side as the sheets are turned, affords a perfect flat writing surface. The back is padded to prevent the rounded and polished metal ends from touching the desk.

EXPANSION—The Queen Ledger expands 100 per cent with five turns of the key. The posts remain rigid and there is very little or no play even when fully expanded. Ample room for easy insertion of sheets, is afforded. The quadruple threaded screw exerts great power, binding the sheets as in a vise.

STOCK SIZES—The Queen Ledger is carried in stock in three different sizes of back, viz.: 1 1/2, 2 and 3 in.; for the following size sheets: 8 3/4x11 3/8; 8 1/4x13 7/8, 9 1/4x11 7/8, 10 1/4x10 1/2, 10 1/2x16, 11 1/4x11 7/8, 14x17.

Special sizes are made to order for any size sheet having binding edge of any of the following sizes: 8 1/4, 8 3/4, 9 1/4, 10 1/2, 11 1/4, 12, 14 and 16 inches.

The Superior Price Book



This is the lightest and simplest Price Book on the market. Perfectly flat opening—lies on the desk flat as a sheet of paper. Is opened by pulling the hooks apart. No slides or catches to wear out, break or get weak jointed. Has the simplest mechanism ever put into a Price Book. All three hooks are operated at one time. Simply take hold of middle hook with both hands as shown in cut and pull them apart. Hooks open with a snap and are held wide open for arrangement of sheets. To close book push hooks together and they close with a snap, and stay positively closed.

The Superior Patent Fly Leaf Flap throws over sheets positively, but without strain or punching, and makes it impossible for them to catch on hooks.

Made only in 12 and 14 inch backs.

Special sizes made to order in any size for sheets up to and including 12 inches.

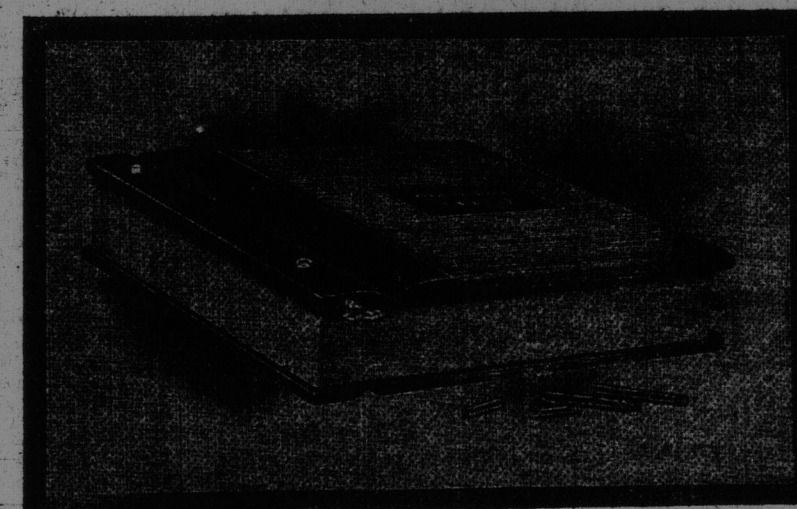
Stock sizes—3x5 1/2, 7x4, 8x5, 9x6, 11x8 1/2.

If you are thinking of putting in a Ledger, Bill and Charge System or any Loose Leaf Device call up

PHONE MAIN 15

and a representative will call on you and quote you prices.

Sectional Post End Locking Transfer Ledger



METAL ENDS PROTECTED WITH RUBBER PLUGS

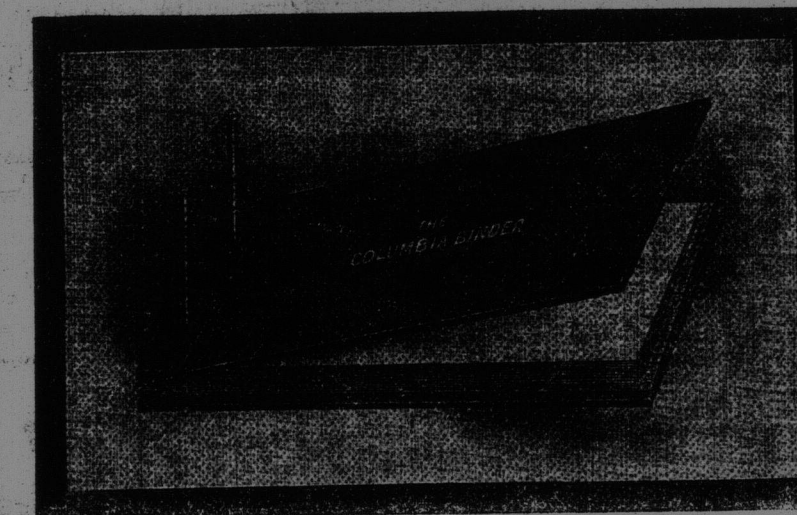
This Transfer Binder is the latest production and highest type of mechanical art. In the locking mechanism is embodied the greatest perfection—the "incline plane," commonly known as the "screw" that has as yet been attained by mechanical experts. One turn of the key locks or unlocks. Impossible to get out of order. Binds rigidly and does not mar the posts as the pressure is equally exerted from both ends. The locking parts are encased in a solid metal tube which is well padded, and ends are rubber tipped. The hinge is strongly reinforced with heavy canvas.

It is built on the only practical principle—sectional posts. There are five one-inch and two half-inch sections to each post. As the posts are always built up a half inch at a time they never project above the top cover. A small neatly finished knob tops off each post. Nothing whatever can catch or tear the sheets.

Furnished with 5/16 inch diameter posts for the Queen Ledger with gauges to correspond and with 3/8 inch diameter posts for the Commercial Ledger with gauges to correspond.

Carried in stock in Russia and Corduroy binding. Any other style of binding furnished upon request. 7 1/2x10 3/8—8 3/4x11 3/8—9 1/4x11 7/8—10 1/4x10 1/2—8 1/4x13 7/8 11 1/4x11 7/8—10 1/2x16—14x17. Special sizes made to order.

The "Columbia" Binder



This is a very substantial light weight Sectional Post Binder with a first class lock capable of indefinite expansion. Can be built up 1/2 inch at a time from 1 to 6 inches. Has capacity of from 1 to 1,200 sheets. Locks securely at any point. Standard posts 3/8 inch diameter, 6 inches long, composed of five one inch and two half inch sections and knob. Metal ends protected with rubber tips. Carried in stock bound in canvas with leather corners.

Stock sizes—7 1/2x10 3/8, 8 1/4x13 7/8, 10 1/4x10 1/2, 10 1/2x16, 8 3/4x11 3/8, 9 1/4x11 7/8, 11 1/4x11 7/8, 14x17.

Any other size made to order. To prevent warping heavy beveled boards should be used on all binders for sheets over 14 in. from binding edge.

POST CENTRES.

Sheet up to 6 1/4 in. on binding side, 2 7/8 in. C. to C.

Sheet 6 1/4 in. and under 10 1/2 in., 4 1/2 in., C. to C.

Sheet 10 1/2 in. and under 11 3/8 in., 7 in. C. to C.

Sheet 11 3/8 in. and over 8 1/2 in. C. to C.

Same Goods at Better Prices

Try Our Prices

THE ST. JOHN TELEGRAPH PUBLISHING CO.,

ST. JOHN, N. B.