

This dry distillation of the tailings from the Classen plant is a distinct process, requiring a distinct equipment. Tests as to the manufacture of charcoal by the retort process referred to above show that the results are better than with wood ordinarily used.

#### SAW MILLS ADAPTED TO PROCESS.

It is apropos to explain to what class of mills the Classen wood distillation process is adapted. In the first place there should be a daily product, either of one mill or of several closely associated, mills—preferably one—of at least 20 tons of waste a day, although a plant could be adapted to a smaller product.

Second, it should be a mill cutting exclusively one kind of wood. This is because hard and soft woods require a different degree of heat in the digester or boiler, and where the wood waste is composed of hard and soft woods the returns are not as great as they are where they are worked separately.

The company advise us that the illustrations shown

but not in time to pull him out, and the raft closed on him, crushing his chest between the boat and the timber. Death was almost instantaneous.

Deceased was a lieutenant of the Forty-Third Duke of Cornwall's Own Rifles of Ottawa, and was very popular. He was nineteen years of age and a young man of much promise. He had decided to take up the lumber business and spent last winter in the shanties for the Sheppard & Morse Company, his object being to learn every branch of the business.

He was buried on July 27th with full military honors, his regiment being present in good strength and all of the corps of the Ottawa brigade being represented.

#### DOMINION EXHIBITION.

Although the dates set for the Dominion Exhibition at Toronto are Aug. 27 to Sept. 12, the formal opening will not take place until Saturday, Aug. 29, when, under the rules, everything will have to be in place

#### SHAVINGS.

A redwood tree recently cut in California made 150,000 feet of lumber. Operators in the older sections of the country can hardly comprehend that one tree would furnish a day's work for a good sized sawmill.

The summer meeting of the American Forestry Association will be held August 25 and 26 in Minneapolis, upon the invitation of the governor of Minnesota and the city of Minneapolis.

After a hearing extending over a number of days and comparison of Minnesota coal and lumber rates with those charged by the railroads in adjacent states, the Minnesota State Railroad & Warehouse Commission has ordered a reduction of ten per cent. in coal rates and fifteen per cent in lumber rates on the roads within the boundaries within the state.

Owners of mills are interested in experiments that have been made with graphite as a preventative of scale in boilers. It is said that a small quantity of

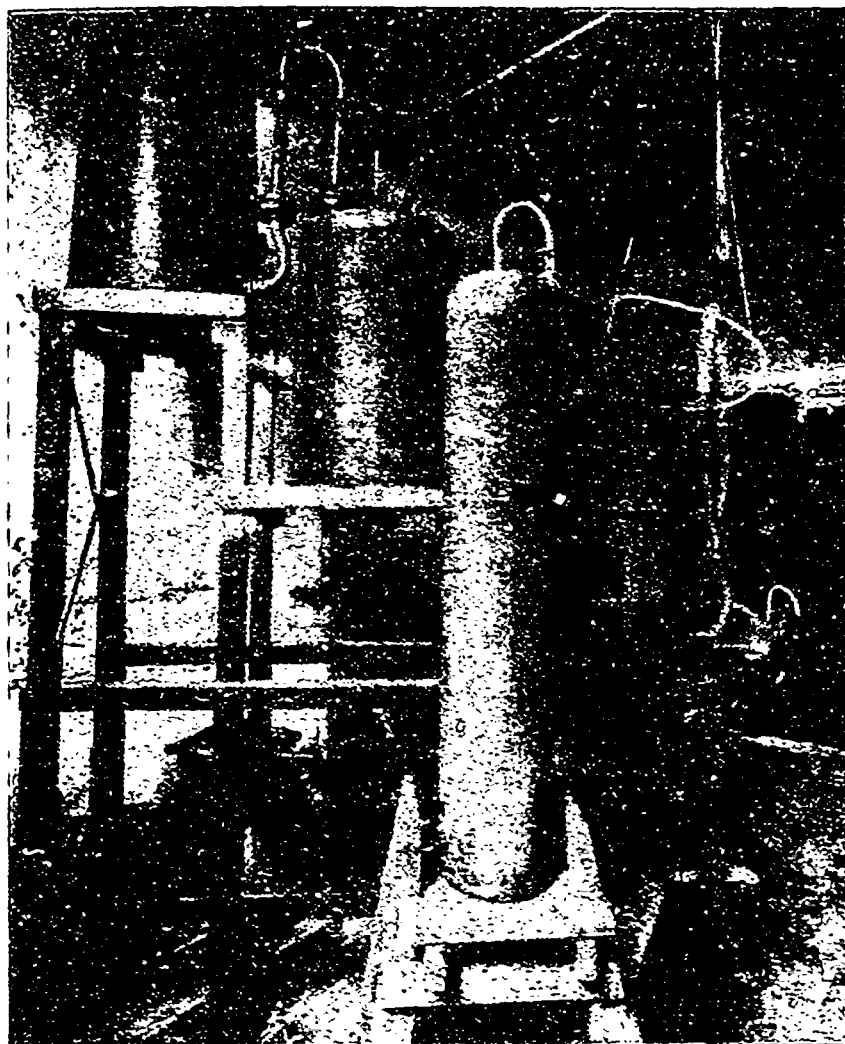


FIG. 3.—ACID ROOM AND APPARATUS.



FIG. 4.—STILL ROOM AND APPARATUS.

herewith were prepared by the American Lumberman.

#### DEATH OF LIEUTENANT WHELEN.

News of the tragic death of Lieutenant George Hume Whelen, son of Mr. Peter Whelen, of the Sheppard & Morse Lumber Company, Ottawa, which occurred on July 25th, brought the deepest sorrow to a wide circle of friends and acquaintances. Deceased had reached Quebec with a raft of timber for the Sheppard & Morse Company. The raft had just been snubbed to the dock as the tide changed. The current swung the raft around towards the wharf and as it closed in Mr. Whelen saw that the raft was closing in on the ferry boat, which was lying alongside the wharf. He took up a pike pole and placing it against the side of the steel hull of the boat stood on the edge of the raft and endeavored to keep the weight from crushing in the boat. His pike pole slipped and he fell head-first into the water. He immediately came up, when one of the raftsmen caught his outstretched hand,

and ready for inspection by the public from 9 a. m. to 10 p. m. All the special features, including Kiralfy's great spectacle "A Carnival in Venice," will be given that day. The Exhibition will be considered officially closed at 10 p. m. on Saturday, the 12th of September, after which exhibitors must remove all their property from the grounds and buildings. No removals will under any circumstances be allowed before Monday morning, September 14th, except in the case of live stock, which may be removed after the parade of prize winners at 2 p. m. on Saturday, 12th September, and agricultural and horticultural products, which may be removed after 10 p. m. and 4 p. m. respectively on Saturday, 12th September, and poultry at 4 p. m. Friday, September 11th.

—The Howe Wood-Working Company, Limited have been incorporated at Fredericton, N. B.

—Mr. William K. Grafferty, of the Montreal Lumber Company, has been proposed for membership in the Montreal Board of Trade.

graphite mixed with water used in boilers to prevent scale formation, and that if scale is already in the boiler, the graphite will penetrate the old scale and decompose it, causing it to drop to the bottom.

#### TRADE NOTES.

A. J. Young, of Cache Bay, Ont., has purchased the wholesale stock of lumbermen's supplies, etc., of George Gordon & Company at Haileybury, Ont.

The J. S. Henderson Company, of Parrsboro, N. S., have just patented a new style of larrigan which is calculated to revolutionize this kind of foot wear. The company have this season manufactured upwards of 12,000 complete larrigans.

The Syracuse Smelting Works, Montreal, have lately received an order for 20 tons of high grade habbitt metal from the largest manufacturer in Canada. They are also turning out for exportation very large orders of habbitt metal, linotype and stereotype metal. We understand they employ about 60 men, who are kept busy day and night turning out rush orders.