

timbers, the full range of Imperial grown timbers and especially those timbers which up to the present are only very slightly, if at all, known in this country, and at the same time to demonstrate the chief uses for which such timbers are suitable.

A catalogue will be issued giving full particulars of all exhibits displayed, and will include among other features:

(a) A short concise statement regarding each kind of timber exhibited, showing the size in which it is usually obtainable, and the purposes for which it is specially suited; also giving the following particulars, viz.:

1. Weight in lbs. per cubic foot.
2. The result of tests carried out with regard to:

Tension,  
Compression, both with and across  
the grain,  
Detrusion,  
Modulus of rupture,  
Modulus of elasticity,  
Fire resistance.

(b) A list of the shippers of the various kinds of timber in each of the Dominions.

(c) A list of importers and large timber merchants in the United Kingdom who would be prepared to supply the various timbers to users in this country.

The British Trade Commissioners in Canada are as follows: G. T. Milne, O.B.E., 367 Beaver Hall Square, Montreal; F. W. Field, 260 Confederation Life Building, Toronto, and I. B. Beale, 610 Electric Railway Chambers, Winnipeg.

## CONTRACTORS and SUB-CONTRACTORS

As Supplied by the Architects of Buildings  
Featured in This Issue.

### ALLEN DANFORTH THEATRE, TORONTO.

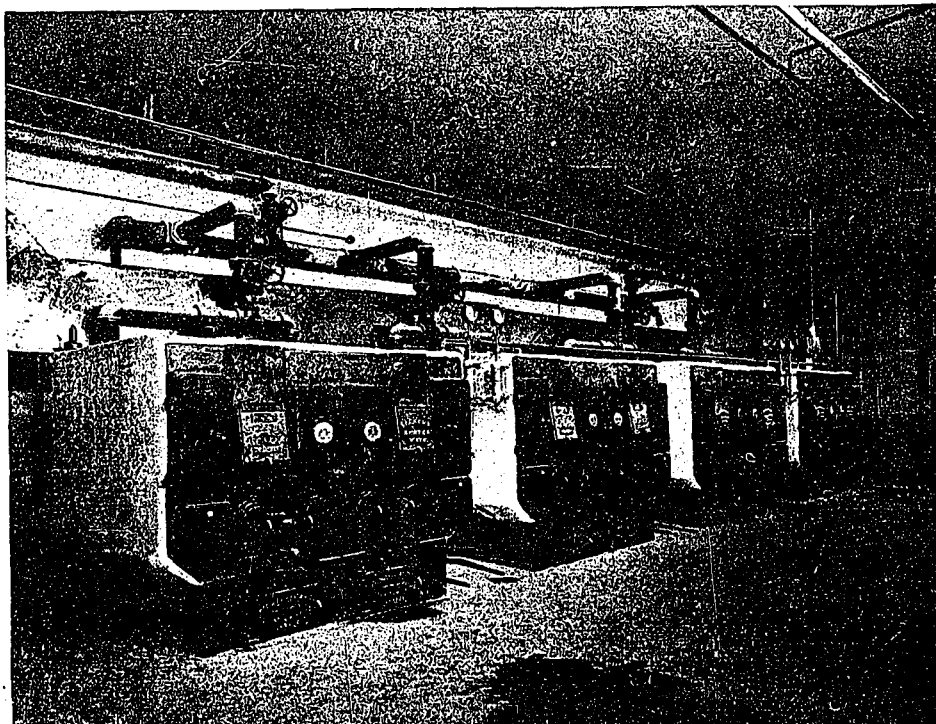
Boiler, Spencer Heater Co.  
Brick, Milton Pressed Brick Co.  
Carpentry, Geo. Robinson.  
Conduits, Conduits Limited.  
Doors and Trim, R. Laidlaw Lumber Co.  
Electric Fixtures, Wordell Electric Fixture Co.  
Electric Sign, E. L. Ruddy Co.  
Fire Doors, W. E. Dillon Co.  
Furnishing, Robt. Simpson Co.  
General Contractors, Yolles & Rotenburg.  
Glass, Pilkington Bros.  
Lighting Contractors, Canada Electric Co.  
Marquee, Can. Ornamental Iron Co.  
Plastering, W. J. Hynes.  
Plumbing, A. Welch & Son.  
Seating, American Seating Co.  
Steel Trusses, Allis-Chalmers Co.  
Tenzzo and Marble Work, Italian Marble & Mosaic Co.  
Tiles, Robt. Simpson Co.  
Ventilation, Sheldon's Limited.

### HAMILTON (ONT.), TECHNICAL SCHOOL.

Boilers, Spencer Heater Co.  
Brick, Milton Pressed Brick Co.; Stark Glazed Brick.  
Clocks, International Time Recording Co.  
Electrical Contractors, Culley & Bray.  
Electrical Fixtures, Benjamin Electric Co.  
General Contractors, W. H. Yates, Jr.  
Hardware, Belleville Hardware & Lock Mfg. Co.  
Kalamine Doors, McFarlane, Douglas Co.  
Lockers, Canada Wire & Iron Co.  
Painting, Stamp & Son.  
Plumbing Contractors, Adam Clark & Son.  
Plumbing Fixtures, Porcelain Products Co.  
Radiators, Steel & Radiation Limited.  
Reinforced Concrete, Trussed Concrete Steel Co.  
Roofing, Dennis & Jocelyn.  
Seating, Canada Foundries & Forgings Co. (James Smart Division).  
Stair Treads, Mason Tread Co.  
Steel Sash, Trussed Concrete Steel Co.  
Stone, Ritchie Cut Stone Co.  
Telephones, Northern Electric Co.  
Temperature Regulator, Canadian Powers Regulator Co.  
Terrazzo, Kent, Garvin & Co.  
Ventilating, Sheldons Limited.

### MEMORIAL SCHOOL, HAMILTON, ONT.

Brick, Milton Pressed Brick Co.; Hamilton Stock Brick Co.  
Electric Wiring, Culley & Bray.  
General Contractors, Frid Construction Co.  
Hardware, Belleville.  
Painting, James Church.  
Reinforced Concrete, Trussed Concrete Steel Co.  
Roofing, Thomas Irwin.  
Seating, Globe Furniture Co.  
Stone, Ritchie Cut Stone Co.  
Terrazzo, Kent Garvin Co.



SPENCER BOILERS, INSTALLED IN NEW MEMORIAL SCHOOL, HAMILTON, ONTARIO.