

ATLAS ASSURANCE CO'Y, OF LONDON, ENGLAND.

FOUNDED 1808.

CAPITAL, £1,200,000 Stg.

JOINT MANAGERS:

OWEN MURPHY, M.P.P. LOUIS H. BOULT.
Montreal.

WOOD & MACDONALD,
Agents for Toronto, - 92 King Street East
Agents required in unrepresented towns

NATIONAL ASSURANCE CO'Y OF IRELAND.

Incorporated 1832.

CAPITAL, £1,000,000 Stg.

CHIEF AGENTS:

OWEN MURPHY, M.P.P. LOUIS H. BOULT.
Montreal.

WOOD & MACDONALD,
Agents for Toronto, - 92 King Street East.
Agents required in unrepresented towns.

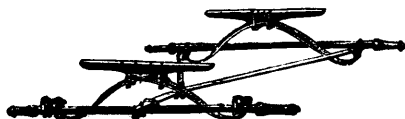
THE EQUITABLE LIFE
ASSURANCE SOCIETY.

CONDENSED STATEMENT.

January 1, 1889.

ASSETS, - - -	\$95,042,922.96
LIABILITIES, 4% - - -	\$74,248,207.81
SURPLUS, - - -	\$20,794,715.15
NEW ASSURANCE, {	\$153,933,535.00
OUTSTANDING ASSURANCE, {	\$549,216,126.00
INCOME, - - -	\$26,958,977.59
SURPLUS EARNED IN 1888, {	\$5,067,123.68
PERCENTAGE OF ASSETS TO LIABILITIES, {	128
INCREASE IN SURPLUS, {	\$2,690,460.30
INCREASE IN INCOME, {	\$3,718,128.30
INCREASE IN ASSETS, {	\$10,664,018.11

Armstrong's Handy Favorite Gear.



Merchants, Manufacturers, or others wanting a Handy, Light, Low down, Run-about Wagon, should secure one on the above gear. Weight carried close to shoulders of axles, strongest point. Springs—our perfect plate—the only Spring in the world that will ride easy when light or full loaded. Get descriptive circular of carrying capacities. Three sizes made. Prices right. The leading carriage builders handle them.

J. B. ARMSTRONG MAN'G CO., Ltd.,
GUELPH, - CANADA.

DOMINION PAPER BOX COMPANY,
MANUFACTURERS OF
HARDWARE FOLDING BOXES,
CONFECTIONERS' FOLDING BOXES.
Packages specially adapted for all classes of goods.
74 and 76 King St. West, Toronto.

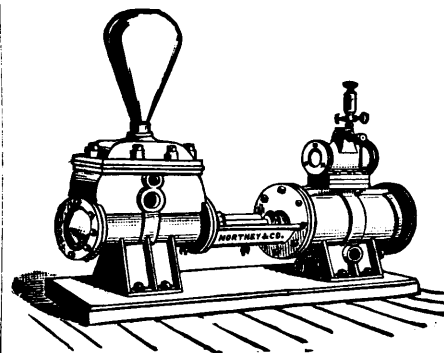


MANITOBA WIRE CO.,
BELLEVILLE, ONT.,
MANUFACTURER OF

Barbed & Plain Twisted Fence Wire

And the only make of wire in Canada on which is found the Genuine Lock Barb. A personal inspection will convince you of this fact. Quality of wire—the Best English Bessemer Steel. Every pound guaranteed. If price is an object—write for particulars before buying.

SINGLE & DUPLEX
Steam & Power Pumps



For Boiler Feeding, Fire Protection, Water Supply, Mining Use, etc.

All our Pumps are of the latest and best design, the result of long and valuable experience in the Canadian pump trade.

Independent Air Pump Condensers | For prices and particulars - write for Catalogue -

NORTHEY & CO., TORONTO, ONT.
Office & Works:
COR. FRONT & PARLIAMENT STS.

ÆTNA LIFE INSURANCE COMPANY, OF HARTFORD, CONN.

THIRTY-NINTH ANNUAL REPORT,

JANUARY 1, 1889.

ASSETS, January 1st, 1888 at Cost \$31,234,520 73

Premiums in 1888	\$3,304,964 16	
Interest, and from other sources in 1888	1,730,120 97	5,135,085 13

RECEIPTS.

DISBURSEMENTS.

Death Claims	\$1,509,984 71	
Matured Endowments	778,161 59	
Dividends to Policy-holders and for Surrendered Policies	888,110 99	
Commissions	401,884 69	
Agency Expenses, Medical Examinations, and other expenses	245,068 38	
Dividends on Stock, earned in Stock Department	12,000 00	
Taxes, \$90,981.15; Re-insurance, \$1,207.80	92,187 95	4,015,408 26

Assets, December 31st, 1888, at cost

\$32,324,197 59

ASSETS.

Real Estate	\$ 832,404 70
Office Building	250,000 00
Cash on hand and in banks	3,737,601 86
United States Bonds	975,875 00
Railroad and other Stocks and Bonds	798,058 13
Bank Stocks	1,000,074 04
State, County, City, and Town Bonds	7,212,403 74
Mortgages secured by Real Estate valued at over \$58,500,000 00	15,723,590 77
Loans on Collaterals (market value \$759,165.00)	540,768 81
Loans on Personal Security	2,401 21
Loans on existing Policies, valued at over \$5,000,000.00	1,747,974 09
Balances due from Agents	2,445 92

Assets, December 31st, at cost price

\$32,324, 97 58

Interest due and accrued, December 31, 1888	\$ 531,606 94
Premiums in course of collection	93,891 37
Quarterly and semi-annual Premiums	189,917 85
Market value of securities over cost	67,301 21

1,494,837 38

Gross Assets, January 1, 1889

\$33,819,034 97

LIABILITIES.

Losses and Claims awaiting further proof and not yet due	\$ 252, 20 00
Dividends to Policy-holders, not due	150,762 84
Premiums paid in advance	6,221 95
Reserve for Re-insurance on existing Premiums	27,773 25 90
All other Liabilities	70,674 00

\$28,232,979 73

SU PLUS AS REGARDS POLICY-HOLDERS.

By Conn., Mass., and New York Standard	\$5,566,035 21
By Standard of many other States and Canada	7,325,000 00

Policies in force January 1, 1889, 67,749, insuring	\$10,964,303 44
Policies issued in 1888, 8,083, insuring	16,094, 87 00

MORGAN G. BULKELEY, President. J. C. WEBSTER, Vice-President. J. L. ENGLISH, Secretary.
H. W. ST. JOHN, Actuary.

W. H. ORR & SONS, Managers, Toronto.

ST. CATHARINES SAW WORKS

R. H. SMITH & CO.,
ST. CATHARINES, ONTARIO,

Sole Manufacturers in Canada of

THE "SIMONDS" SAWS AT GREATLY REDUCED PRICES.

All our Goods are manufactured by the "Simonds process."
Our CIRCULAR SAWS are unequalled. We manufacture the genuine HANLAN, LANCE TOOTH, DIAMOND, NEW IMPROVED CHAMPION, and all other kinds of CROSS-CUT SAWS. Our Hand Saws are the best in the market, and as cheap as the cheapest. Ask your Hardware Dealer for the St. Catharines make of Saws.
The Largest Saw Works in the Dominion.

