

DON'T JUMP INTO AN IRON MINE MUCH LESS A GOLD OR SILVER ONE

Without at least knowing SOMETHING about minerals. It may require months and perhaps years to obtain by costly experience the rudimentary knowledge so essential to success. Living in a country rich in minerals of all kinds, you should know whether you intend to mine or not. **How to Prospect. How to test Ore-bearing Rock. How to Assay.**

A Pleasant Course of Study.

Classes in English and in French are being formed weekly, in which pupils will be taught to distinguish the various minerals, how to find them, how to make quick camp assay tests, how to pan and how to outfit for the field. For a personally attended course of six lessons \$5.00.

For those unable to attend personally, a correspondence course has been arranged, which can be made as useful and profitable as a personally conducted course. Term, \$10 for the course, including a testing outfit and a set of mineral specimens.

Its aim is, as far as possible, to give a demonstration of the mineral wealth of Canada, from the Atlantic to the Pacific, from Nova Scotia to the Yukon.

Canadian Mining Exhibit Company, (Limited).

650 Craig Street,
MONTREAL.

A College Course not Necessary.

The Company requests prospectors and claim-owners to send samples of their minerals, with full details and price of location.

It makes assays by its own assayer, and provides confirmatory assays by any of the best-known assayers.

It supplies Camping Outfits, Tools and the latest appliances in Mining Machinery.

It conducts training classes for intending prospectors and a Correspondence Course for those unable to personally attend in the city.

Write for further particulars and start at once.

Turbine AND Cascade WATER WHEEL

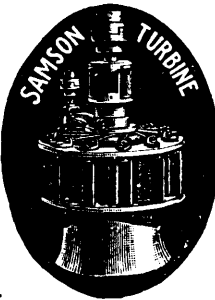
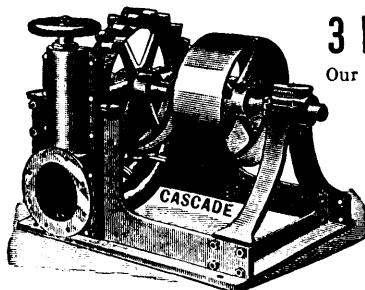
Adapted to all Heads from

3 Feet to 2000 Feet

Our experience of 33 YEARS building Water Wheels enables us to suit every requirement of Water Power Plants. We guarantee satisfaction.

Send for a Pamphlet of either Wheel and write full particulars.

James Leffel & Co.
SPRINGFIELD, OHIO, U.S.A.



Wm. J. Trethewey, E. M. Maurice A. Bucke, M. E.

TRETHEWEY & BUCKE, MINING ENGINEERS

Fifteen years' experience
Silver Lead Mining. . . .

Codes: Moring & Neal's; "Bedford-McNeill." Cable address, "WARRUS."

Specialties—Reports, Mine Management, Underground Plans and Models.

Departments in—Provincial Land Surveying, J. M. R. Fairbairn, P.L.S.

Assaying—James Cook, G.A.C., late of Tharsis Sulphur & Copper Co.

OFFICES:

VANCOUVER, B.C. KASLO, B.C.

ENGRAVINGS! Portraits! Buildings! Scenery!

Fac-similes of Signatures, Letters and Engravings of all kinds for Book and newspaper Printing. Map Engravings from Tracings. Also Reproductions from Photographs, Brush Drawings and Prints. Fine Book and Catalogue Illustrations. Good Work at Low Prices.

SPIKE BROS.' COMPANY, TACOMA, WASH.

Edwards Bros.,

534 Cordova St.,

VANCOUVER, B. C.

DEALERS IN

Photographic Stock

Agents for the Rochester Optical Co., and the Eastman Kodak Co.

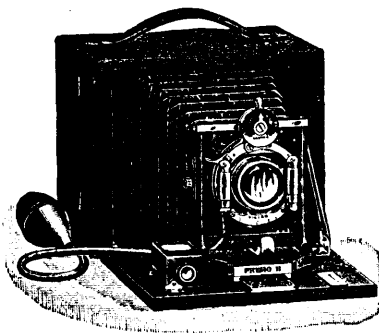
LARGE STOCK OF—

Film and Plate Cameras

—ON HAND.

PRICES SENT ON APPLICATION.

PREMO B. \$15.



HARRIS, KENNEDY & CO.,

Box 157 ROSSLAND, B.C.
and KASLO.

Codes {A B C, Moring & Neal's, Clough's.

Cable address: "Graham," Rossland.

MINING BROKERS.

WE have some valuable properties suitable for the English market. Confidential reports made on B.C. Mining Properties. References: Roberts, Lubbock & Co., Bankers, 15 Lombard Street, E.C.; George Freeman, 23 Throgmorton Street, E.C., and others if required. Correspondence Solicited.

Jones' Hand Rock Drill.

(Manufactured By E. P. Allis & Co. Milwaukee.)

The Simplest, Strongest and Most Easily Adjustable
of any Rock Drill Made.

Nothing but the best Tool Steel and Bronze is used in the construction of the Wearing and Working Parts; the WORKMANSHIP cannot be surpassed; they will give the BEST RESULTS in actual work; and no miner can afford to be without them.

Machine on view at office, No. 14 Board of Trade Building. Terms on application to

J. N. S. WILLIAMS,

Sole Agent, Victoria, B.C.

Electric Lighting & Power.

Write or call on T. Watson for estimates
on House Lighting or Power Plants.
TEL. 409.

General Electric Construction, Etc.

P.O. BOX 397.

28 Broad Street, Victoria, B.C.

When writing to Advertisers kindly refer to the B.C. MINING RECORD.