

LIPTON'S Table Jellies



for
**Quality, Purity
and
Value.**
NONE BETTER

dec13, eod, 1f

From one tiny corner of Sunny Spain, come the
World's most Delicious

Green Olives!

QUEEN OLIVES
(in Glass)
STUFFED OLIVES
(in Glass)

Use **GREEN OLIVES**
in Salads and Sand-
wiches, and as garnish-
es.

**BONED
CHICKEN**

Just meat of chicken, tender
and delicious. For tasty
Salads, or Sandwiches. 35c.
per tin.

SLICES OF REAL FLAVOR!

You can always be certain of the finest BACON
by buying it at BEARNS'.

The uniform slicing of our BACON makes it possible
for you to fry each strip evenly to just the degree
of crispness you prefer.

RIPE BANANAS.

RIPE TOMATOES.

FRESH LETTUCE.

W. E. BEARNS

TWO STORES:

DUCKWORTH ST. RAWLINS' CROSS.

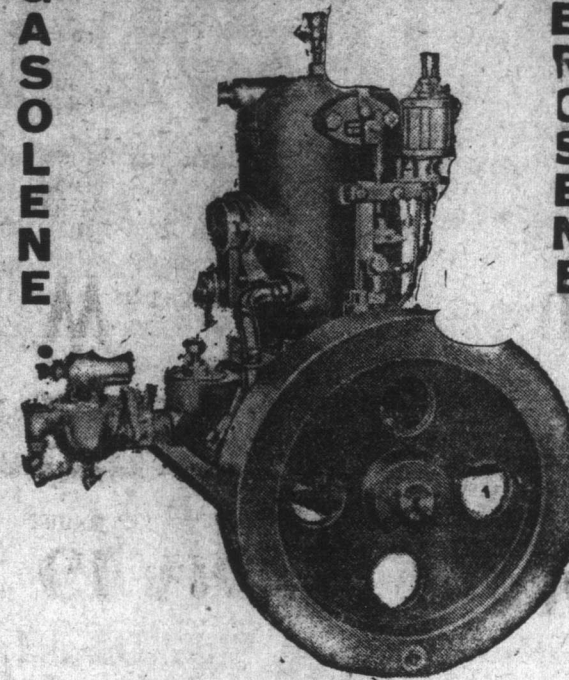
279. 'PHONE 971.

apr3, eod, 1y

ACADIA ENGINES!

GASOLINE

KEROSENE



ALWAYS DEPENDABLE.

We carry a large assortment of Engine Accessor-
ies, also Schooners' Heaving and Hoisting equipment,
Circular Saws, Rubber Belting, Batteries, Grease,
Acadia Lubricating Oil, Hand and Power Pumps.

Acadia Gas Engines, Limited.
ST. JOHN'S.

feb2, fm, eod

SLATTERY'S Wholesale Dry Goods Co., LIMITED.

— IN STOCK —

PERCALES
SKIRTINGS
NAINSOOKS
COTTON DES
LINGETTE
TOWELS
HOSIERY

GINGHAMS
LAWNS
DENIMS
SCRIMS
CRIPES
TOWELING
UNDERWEAR, etc.

SLATTERY'S Wholesale Dry Goods Co., LIMITED.

apr10, fm, eod

GET IT AT GEAR'S Empire Cord Tires & Tubes

As Good as the Best With Prices That Beat Them All.

CORD TIRES.		
30 x 3 1/2 CLINCHER	\$16.00
30 x 3 1/2 STRAIGHT SIDE	\$17.00
31 x 4 STRAIGHT SIDE	\$25.10
32 x 4 1/2 STRAIGHT SIDE	\$35.90
33 x 4 1/2 STRAIGHT SIDE	\$36.50
34 x 4 1/2 STRAIGHT SIDE	\$38.50
TUBES RED (Heavy Duty)		
30 x 3 1/2	\$ 4.15
31 x 4	\$ 4.50
32 x 4 1/2	\$ 5.20
33 x 4 1/2	\$ 5.90
34 x 4 1/2	\$ 6.20
TUBES (Grey)		
30 x 3 1/2	\$ 2.60

GEAR & CO., Ltd.

'PHONE 404 ST. JOHN'S. 340, WATER STREET

Nothing Like These R suits A Year Ago or Now

It is no trick to build a car that will go 65 or 70 miles an hour
if it has a power plant big enough to haul a freight train.

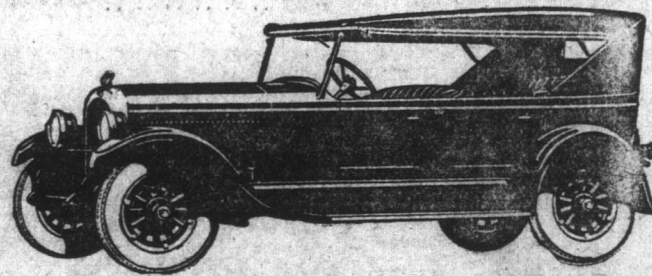
It's a great achievement to get over 70 miles an hour out of a
motor of 3-inch bore and 4 1/2-inch stroke, with gasoline mileage
safely above 30 miles per gallon.

And that's the wonder of the Chrysler Six—a wonder so differ-
ent and so superior that Chrysler was forced to build over
32,000 cars to meet the first-year demand.

Of course you don't want to drive your Chrysler over 70 miles
an hour. In fact you may never so that fast. But there is some-
thing you do want that only a speed-ability of 70 miles can give.

That something is sure, steady power for steep hill or deepest
sand, a pick-up to flash you out of a traffic tangle, sturdy, dotted
pull so you can throttle to five, even two miles an hour, on high
without "bucking."

That's Chrysler performance in a nutshell. You surely must
drive the car. It's the only way you can fully appreciate that it
is the best built car you ever rode in. We are always eager to
demonstrate the Chrysler.



THE TOURING—\$2,295.00

Marshall's Garage

WATER STREET WEST

Showroom: Prescott and Duckworth Streets.

apr24, f, tu, 1f

Morey's Coal is Good Coal.

dec30, eod, 1f

He is satisfied—so will you be if you use

MUSTAD'S

Key Brand

HIGHEST QUALITY

FISH HOOKS.



mar13, tu, 1f

Nfld. Government Railway.

EXCURSION FARE ARRANGEMENTS—EMPIRE
DAY—MAY 25th.

Excursion return tickets will be sold between All
Stations, at—One Way First Class Fare.
Valid for going passage from May 21st to 25th,
inclusive, and returning up to and including May 27th
(except Heart's Content Branch, when tickets will be
valid to return on May 28th.

FREIGHT NOTICE.

**SOUTH COAST AND FORTUNE BAY STEAMSHIP
SERVICE.**

Freight for undermentioned ports, on above route,
per S.S. GLENCOE, accepted at Freight Shed, Mon-
day, May 18th, from 9 a.m. to 5 p.m.

Marystown, Burin, St. Lawrence, Fortune, Grand
Bank, Garnish, Bay L'Argent, Little Bay East, Harbor
Mille, Terrenceville, English Hr. East, Anderson's Cove,
Stone's Cove, Rencontre (Fortune Bay), Lally Cove, Harbor
Pool's Cove, Belleoram, St. Jacques, English Hr., Point
Rosie, Coomb's Cove, Miller's Passage, Little Bay
West, Hr. Breton, Great Harbor, Seal Cove, Pass Is-
land, Grole, Hermitage, Gaultois, Conne River, St.
Alban's, Pushthrough, St. Bernard's, Bay du Nord,
McCallum, Rencontre West (Hermitage Bay), Fran-
co's, Ramea, Burgeo, Grand Bruit, LaPoile, Rose
Blanche, Burnt Island, Port aux Basques.

PASSENGER NOTICE:—Passengers leaving St.
John's on 8.45 a.m. train, Wednesday, May 20th, will
connect with S.S. GLENCOE, at Argentia for above
ports.

**NOTRE DAME BAY AND GREEN BAY STEAMSHIP
SERVICES.**

S.S. CLYDE has now resumed regular service, and
therefore, freight for undermentioned routes, will be
accepted on regular days, as below:—

Notre Dame Bay (South Side) Tuesdays.
Green Bay (North Side) Thursdays.

Nfld. Government Railway.

Red Cross Line

NEW YORK. HALIFAX. ST. JOHN'S

PROBABLE SAILINGS FOR MAY.

From New York:	From St. John's:
.....	ROSALIND May 13th
May 23rd	SILVIA May 26th
May 30th ROSALIND June 6th

THROUGH RATES QUOTED TO ALL PORTS.

WINTER PASSAGES NOW EFFECTIVE.

Round trip tickets issued at special rates with six months'
stop-over privileges.

For further information, apply to

ROWING & COMPANY, 17 Battery Place, New York.
G. S. CAMPBELL & CO., HALIFAX, N.S.
HARVEY & CO., LTD., ST. JOHN'S, Nfld.
Agents.

Farquhar Steamship Companies

BOSTON, MASS.—HALIFAX, N. S.—ST. JOHN'S, Nfld. SERVICE,
S.S. SABLE I. (Passengers and Freight).

Leaves Halifax	May 16th	May 20th for	St. John's
Leaves St. John's	May 20th	June 3rd for	Halifax
Leaves Halifax	May 23rd	June 6th for	Boston
Leaves Boston	May 27th	June 10th for	Halifax

(Subject to change without notice).

Fare \$30.00 between Halifax and St. John's; \$51.50 between Boston and
St. John's, including meals and accommodations.
Apply: **HARVEY & CO., LTD.** St. John's, Newfoundland.
FARQUHAR STEAMSHIP COMPANIES—Head Office, Halifax, N.S.

FREIGHT!

Regular Steamer Sailings from Montreal
via Summerside, P.E.I., to St. John's.
MURRAY TRANSPORT CO., LTD.

Montreal Agents: **THOS. HARRING & SON, LTD.**
Board of Trade, Montreal
Summerside Agents: **MORGERS & ARNETT**

St. John's Agents: **A. H. MURRAY & CO., LTD.**
apr30, eod, 1y

Just Landed, ex S.S. "Marie Neilson"

2,500 TONS

AMERICAN SCREENED LUMP COAL

"BETTER THAN THE BEST!"
\$12.25 PER TON, SENT HOME.

CASHIN & CO. Ltd.

'Phone 1046. BISHOP'S COVE.

ed, 1f

Local Securities for Sale.

54 Shares Standard Manufacturing Company.
70 Harbor Grace Boot & Shoe Company.
35 British Clothing Company.
50 Archibald Bros. Boot & Shoe Company.
Particulars on Application.

BERNARD D. PARSONS,
INVESTMENT BROKER.

'Phone 1731. 12 Muir Bldg.

nov15, tu, 1f

Advertise in The Evening Telegram.

Don't Say Paper, Say the Evening Telegram.

EIGHTH
WEATHER

TORONTO, Nov 15,
moderate gales fr
ROPER & THO
Bar, 29.82; ther, 4

VOLUME 1



Auction



Attention! S

Tuesday, 1

at 11 au

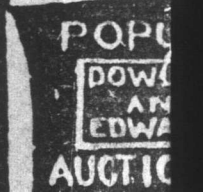
Morris Bldg

We will sell by P
out reserve a large
ettes, in lots to suit
pies may be had a

Don't miss thi

FEARN &

may15, 31, (news), 31



AUCT

At 11

TUESDAY

AT THE EMP

A quantity of Ho

Mc.

Dowden &

may14, 41

AUCT

TWO STORE

At 12 o'clo

Wednesday,

on the premises, th

me 8 and 10 Frank

late possession.

Dowden &

may14, 51

FOR S

Arrived ex

5 New Milc

30 Young Pi

3 General P

Horses.

And to arrive ex

Summer

10 Hd. Choic

Cattle.

WILLIAM B

may12, 51

FOR S

reshold property of

known

"WOODS"

consisting of over

and including orn

and lawn, well bui

welling house. Th

we been renovated

1 recent years an

located in first class

quaters apply to

WILLIAM B

may12, 51, eod