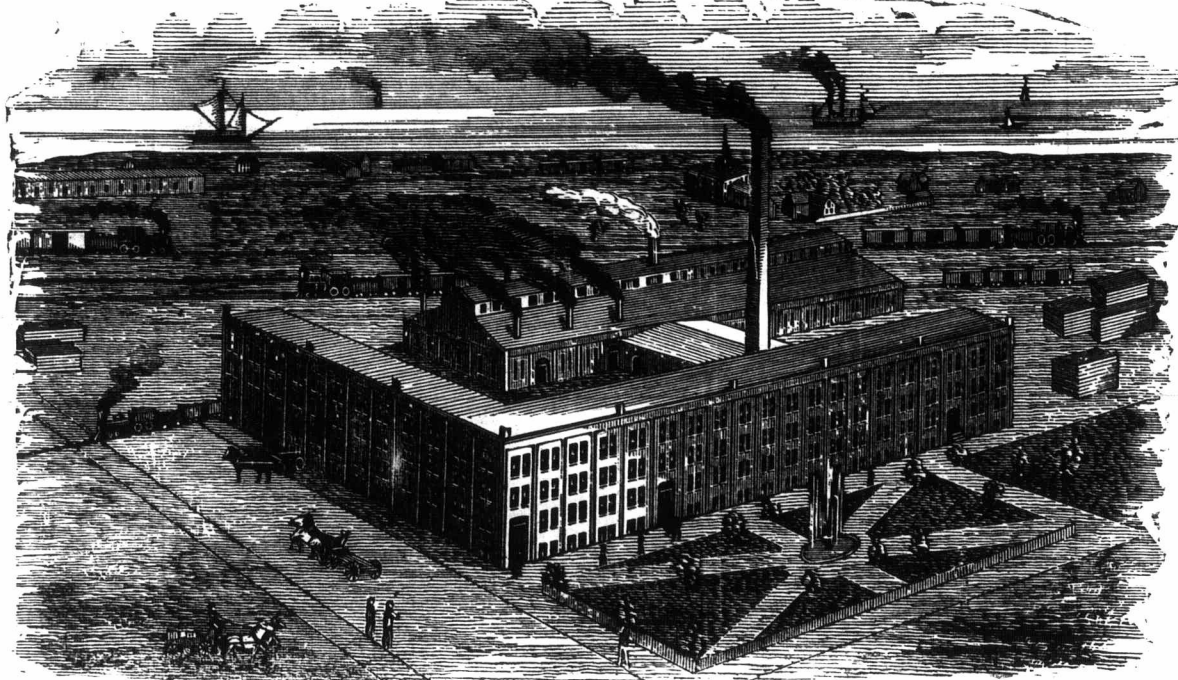


# THE MASSEY MANUFACTURING CO.

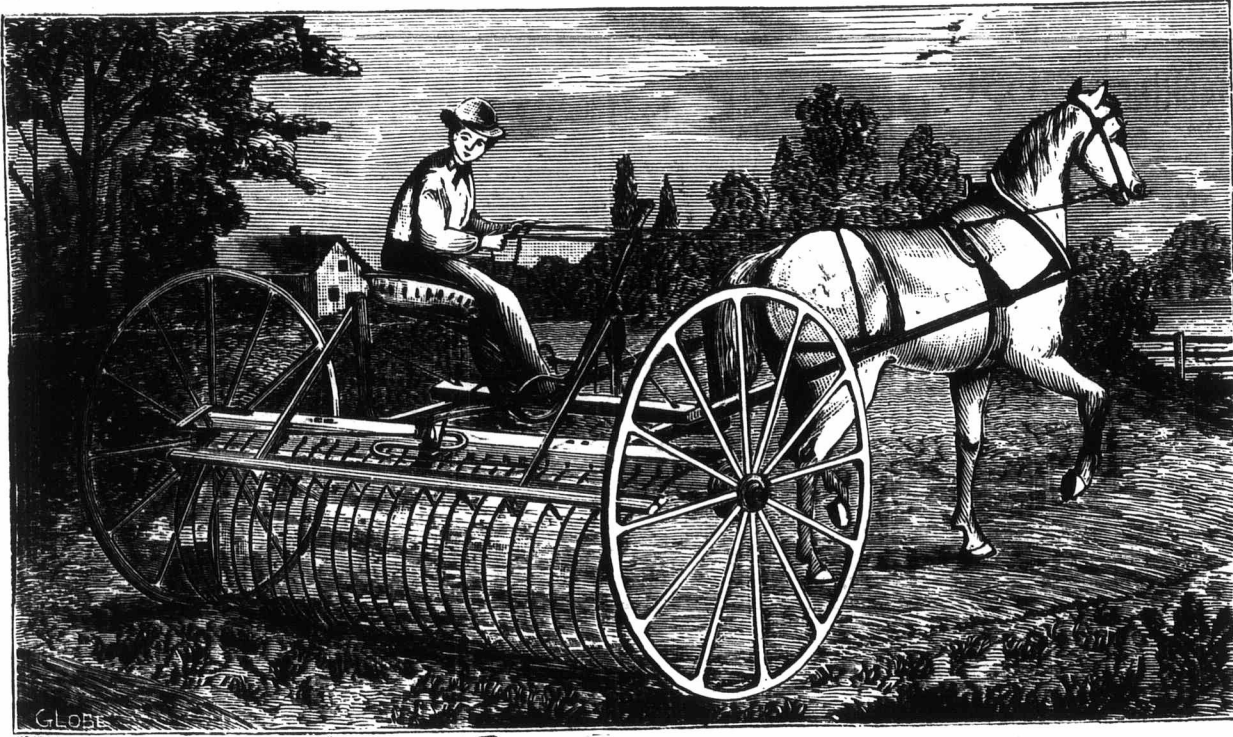
## TORONTO, ONT.

Our new Factory is located on six acres of the old Exhibition Grounds, in the western part of the city, situate between King street and four of the leading Railways entering into the city. From these roads side tracks are laid to admit of the cars being shunted in alongside any of the buildings, loaded with iron, coal, lumber, or other raw materials, and ready to be re-loaded with finished Machines and Horse Rakes.



WORKS OF THE MASSEY MANUFACTURING CO., TORONTO, ONT.

Our removal from Newcastle to Toronto has now taken place. The new factory is in full blast, and we are manufacturing daily 15 Reapers and Mowers and 40 Horse Rakes. Our total production this year will reach nearly 5,000 (Five Thousand) Mowers, Reapers, and Horse Rakes.



SHARP'S SELF-DUMPING RAKE.

7,500 Sharp's Rakes <sup>are</sup> in Use. 3,200 being made for this Season, 1880.

All Sold on the Terms: "NO EQUAL OR NO SALE."

SEND FOR CATALOGUE AND PRICES.

In the construction of our new Factory one million feet of lumber, six hundred loads of stone, and nine thousand panes of 10 x 14 glass were used. The main building is 350 feet long, 50 feet wide, and four stories in height, including basement. The Foundry and Blacksmith Shops are 200 feet long and 60 feet wide. Engine and Boiler House, 35x50; the power is supplied by two 60 H. P. Boilers and a 100 H. P. Brown Corliss Engine, made at Fitchburg, Mass. (the Engine is a beautiful piece of workmanship, said to be the finest in Canada). All the buildings are heated by steam. Three powerful Steam Elevators convey the various materials or finished work from one flat to another in the different departments. No expense whatever has been spared in furnishing the whole factory with New Tools and Machinery of the latest and best description, from the very best makers of both the United States and Canada. Everything has been done to secure the most perfect workmanship, and our customers may hereafter rely more than ever on the high character of the work turned out by us.