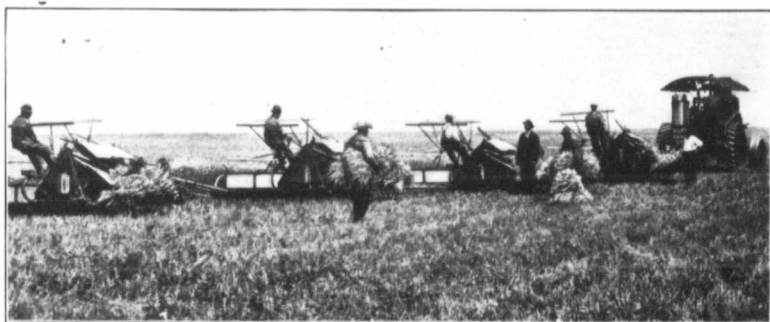


DEPENDABLE FARM POWER

Harvesting and Threshing

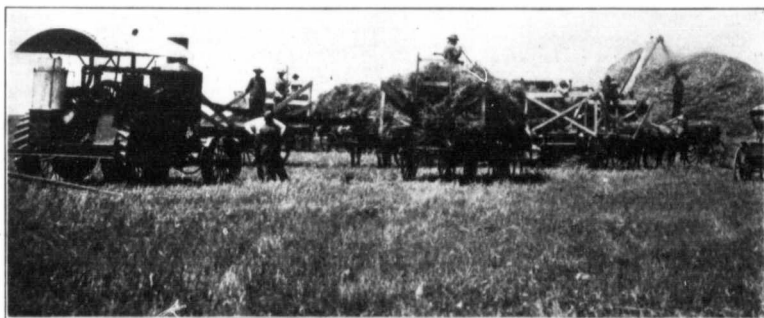
RUSH WORK this: harvesting before the dry, hot days come. Don't let dollars rattle from grain-heads when a **Modern Farm Horse** will work without rest night and day on the cheapest kind of kerosene-feed. A 45 h.p. will pull five big binders, and with its steady, all-day stride will make



Here a 45 H.P. is doing the work of 25 Horses and Cutting 90 to 100 acres a day. This binder hitch can be used with any make or size of binder.

acre after acre disappear like snow before a summer sun. It astonishes men who drive horses to see with what little fuss or trouble—how quickly, how quietly every species of farm machinery can be handled with a **Modern Farm Horse**.

SAFE AND QUICK.—No danger with a Hart-Parr.



Threshermen like a Modern Farm Horse because it delivers such steady power to separators. No danger from fire—no coal—no water.

No fire anywhere to start standing grain. No firemen. No excessive heat as with a steam outfit. With a 45 h.p. tractor 100 acres a day can easily be cut. What a profit-

The Modern Farm Horse

(HART PARR GAS TRACTOR).

able and humane contrast to the old method? Urging, whipping, shouting at a struggling mass of straining horses—flies, heat, dust—some animal, at his limit under a blazing sun—goes down. The months profit with him.

Thousands of farmers have figured it all out in actual practice on their soil, and found that a **Modern Farm Horse** is the cheapest to handle, to feed, to groom. It's a worry-preventer. Always on the job. Ready at a drop of the hat! Eats nothing when resting and takes up little room.

THRESHING.—Steady power delivery is a feature of the **Modern Farm Horse**. A separator must vibrate regularly in order to deliver a certain number of bushels of clean grain per hour. No man can be certain of making a profit if he has a jerky irresponsible engine to tease and fret him. Hundreds of Canadian Threshermen are mighty glad they invested in Hart-Parrs.

Summer Fallow

Great success follows summer fallow in Western Canada. It clears out weeds, gives land a needed rest, allows accumulation of humus, pulverizes soil, facilitates drainage, prevents evaporation and prepares seed-bed of high fertility for next season. Plow deep with a **Modern Farm Horse**. Then cultivate with the apparatus shown on opposite page at a shallow depth of two inches, about four times during the summer. For this work our 30 h.p. tractor is the ideal power.

atus shown on opposite page at a shallow depth of two inches, about four times during the summer. For this work our 30 h.p. tractor is the ideal power.

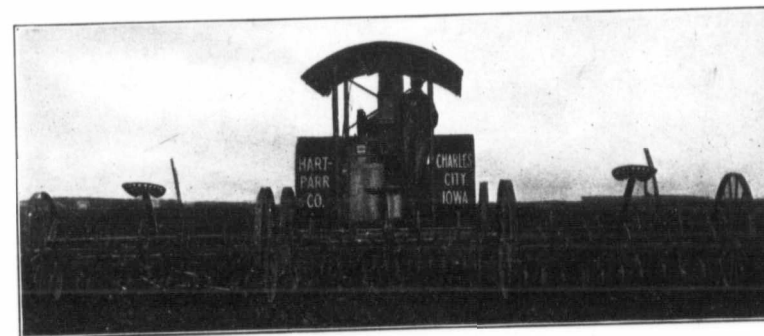
The 30 H.P. Modern Farm Horse

Is adaptable for every sort of farm traction. Summer Fallow, Harvesting, Threshing, Discing, Seeding, Hauling, Roadgrading, Feed Grinding, etc. The "30" is constructed almost entirely of steel—with all steel gears. The high-speed gears and rides easily—no matter what the road. Anyone who farms 320 acres can profitably purchase a "30".

have machine-cut teeth. It has two speeds—one for plowing—one for hauling, and road work. It is spring mounted and rides easily—no matter what the road. Anyone who farms 320 acres can profitably purchase a "30".

Fall Plowing

Autumn Plowing puts your land in ideal shape for the action of frost and sun. It assists the development of plant food. Kills whole tribes of destructive worms and grubs. In the Fall you can plow deeply with either a 45 or a 30. See what this man did last year.



30 H.P. pulling Three Shallow Cultivators—Summer Fallowing.

Mr. F. C. Woods, Manager of the John C. Burchard Co., Stephen, Minn., wrote in Nov. 1910:

STEAM PLOW MAN QUITS BEATEN.

"We broke 540 acres of very tough raw prairie in fine shape that a steam plowman had given up at \$3.00 per acre, because he could not make expenses.

"Through the summer and fall we plowed about 2,000 acres of this

heavy clay soil deeper and better than it had ever been plowed before; and believe that the additional crop next year, on account of the better, deeper, plowing will pay for the engine.

"We consider that this, and other Hart-Parr engines in the community, have raised the value of lands here at least \$5.00 to \$10.00 per acre."

What higher praise could we want when a man "on the ground" testifies that a **Modern Farm Horse** because of its superior ability for eating up farm work, raises the price of land so noticeably.

Be Sure to see Our Tractors at the WINNIPEG and REGINA FAIRS

Our Tractors will not be entered in the Winnipeg Motor Competition for two reasons:

1st.—Such contests cannot bring out questions of durability and reliability, and these are of first importance in selecting a tractor.

2nd.—The rules are so constructed that the results mean nothing to farmers. Four different companies will win Gold Medals for Gas Tractors—so what are they worth? You don't have to read the results of the Motor Contest to learn what a **Modern Farm Horse** can do. In nearly every locality in Western Canada one or more Hart - Parr tractors have been at work for one to three years. ASK YOUR NEIGHBORS WHAT THEY HAVE DONE.



Hart-Parr Co.
Saskatoon, Sask.

HART-PARR COMPANY
30 Main Street, Portage La Prairie, Manitoba

The Chapin Co.
Agents for Alberta. Calgary.