

No. 392

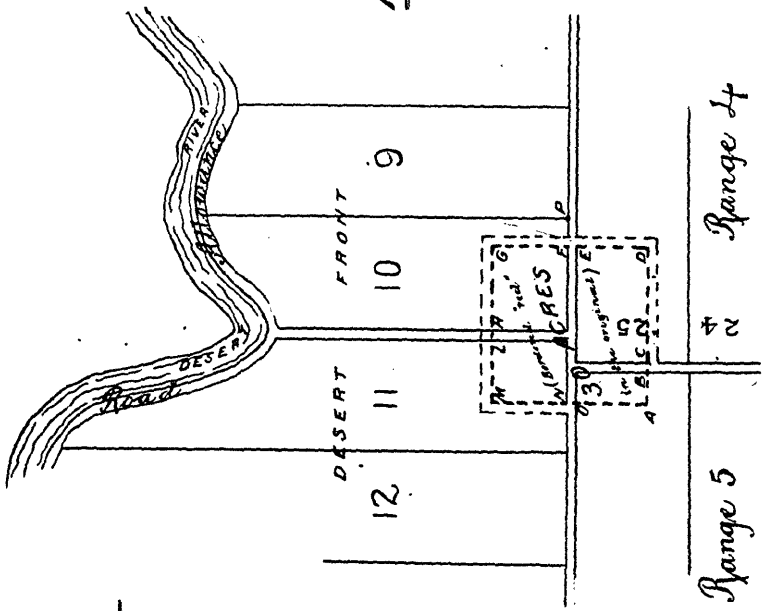
MANIWAKI

Sketch Showing

LAND SURRENDERED

and Proposed to be sold to the

MANIWAKI DRIVING CLUB



- PF = 3.00
- FG = 8.00
- GH = 9.00
- HL = 7.00
- LM = 8.75
- MN = 8.00
- NO = 1.00
- OA = 7.00
- AB = 5.25
- BC = 1.00
- CD = 12.50
- DE = 7.00
- EF = 1.00

SCALE 10 5 10 20 chains

Copied & Enlarged
5-11-97
D.D.S.

ALTERNATIVE COPY (reduced)
100' Base
Chief Surveyor
Dept of Indian Affairs
27 Jan'y 1904

Range 5
Range 4