

LADIES' TWO-PIECE COSTUME, CONSISTING OF A JACKET WITH CAP-TOP SLEEVES AND A FIVE-GORED SKIRT.

(For Illustrations see this Page.)

No. 2221.—By referring to figure No. 175 II in this magazine this costume may be seen differently developed.

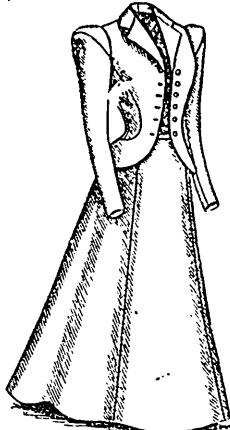
A remarkably attractive costume made of tan broadcloth and nearly finished with straps of the material is here illustrated. An entirely new idea is developed in the adjustment of the jacket, which has its fronts extended to form side-skirts, the whole cut of the jacket imparting an added grace and beauty to the figure. Instead of the usual bust darts, the fronts are snugly fitted by side-front gores cut so as to give the rounded effect that is so desirable. Unusually fine lines are afforded the sides and back by under-arm

the jacket by stitching a strap of the material over the seams joining the cap-tops and extending it down the front over the side-front seams and the hip seams.

The skirt is shaped with a front-gore, a gore at each side and two back-gores and is smoothly fitted at the sides by single hip darts. The scanty fullness at the back is underfolded in overlapping, backward-turning plaits. Straps cover all the seams of the skirt. A bustle or small skirt extender when needed adds to the general effectiveness of the skirt, which measures at the foot a little over four yards in the medium sizes.

All tailor materials are suited for this style of costume, and silk is the most appropriate lining for the jacket.

We have pattern No. 2221 in eight sizes for ladies from thirty to forty-four inches, bust measure. To make the costume for a lady of medium size, will require five yards of material fifty-four inches wide, with a fourth of a yard of velvet twenty inches wide (cut bias) for the collar, and seven-eighths of a yard of material fifty-four inches wide extra for strap-pings. Price of pattern, 1s. or 25 cents.



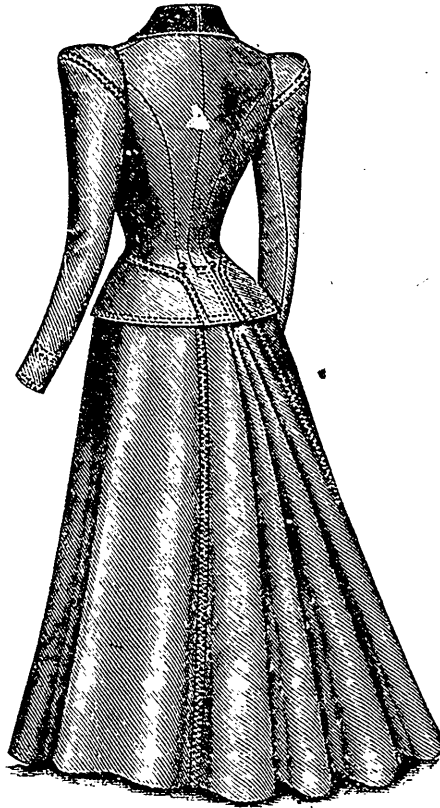
2221

LADIES' TEA-GOWN OR WRAPPER WITH CIRCULAR-FLOUNCE LOWER PART. (TO BE MADE WITH FULL-LENGTH OR ELBOW SLEEVES, WITH A SWEEP OR IN ROUND LENGTH AND WITH OR WITHOUT THE CHEMISETTE AND FITTED UNDER-FRONT.)

(For Illustrations see Page 676.)

No. 2148.—Another view of this tea-gown is given at figure No. 182 II in this number of THE Delineator.

This charming tea-gown is becomingly fashioned with a perfectly adjusted Princess back and a loose front that is held in at the waist by ribbon ties. The tea-gown is here illustrated made of spotted heliotrope challis and effectively trimmed with narrow plaitings of black taffeta silk. It is fitted by a center seam and under-arm darts and side-back gores; and the loose fronts fall over fitted under-fronts of basque depth which complete a perfectly close adjustment. The under-fronts may, however, be omitted, if a loose adjustment be preferred. The fronts are turned back to form large triangular revers that are not stiffened but fall softly and gracefully and are finished with a ruffle of the material edged with a narrow knife-plaiting of black silk. A graduated circular flounce forms the lower part of the tea-gown and gives a soft, fluted appearance about the foot. The gown may be worn with or without the chemisette, which is smoothly adjusted upon the under-fronts and topped



2221.

Back View.

2221
Front View.

LADIES' TWO-PIECE COSTUME, CONSISTING OF A JACKET WITH CAP-TOP SLEEVES AND A FIVE-GORED SKIRT.

(For Description see this Page.)

and side-back gores, and a curving center seam that ends at the top of coat-laps, the backs being cut much longer than the gores, to which are joined the side-skirt extensions of the fronts, that give a uniform depth, except where the fronts round away with a decided sweep toward the back. The side-skirts are smooth, and their back ends, which are joined to the back, are rounded at the top, the curve being decidedly becoming. At the top the fronts are reversed in lapels that form notches with the ends of a rolling velvet collar, and below the lapels the jacket is closed with buttons and button-holes. The two-seam sleeves are made with the new cap-tops; they are smoothly fitted into the arm-holes and stand out in the stylish military way. A unique and graceful effect is given

ped with a standing collar edged with a narrow plaiting of silk. A flare collar shaped with a center seam shows around and above the chemisette collar at the back and sides. The gathered two-seam sleeves are made over fitted linings and may