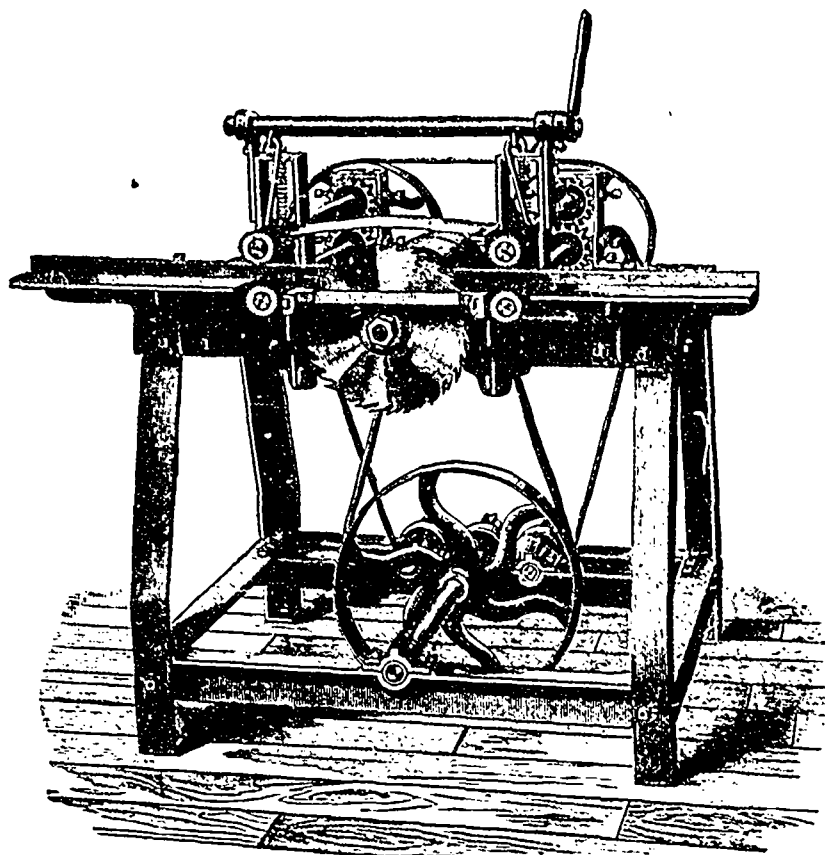


Improved Gang Lath Machine

This Machine has solid iron frame. The drive pulley, unless otherwise ordered, is 8 in. diam., 13 in. face. Feed and press rolls both front and back of saws are milled from solid steel bar and tempered very hard. As usually made it carries four 12 in. saws.

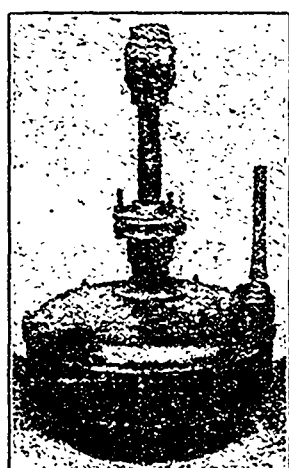
The machine throughout is thoroughly well made, designed especially for continuous fast work, and is capable of turning out a large quantity of work every day.

I manufacture other and heavier Lath Machines and Lath Bolters of various capacities, and have very complete line of both Stationary and Portable Saw Mill and Shingle Mill Machinery, and can quote very low figures to cash or short date customers.



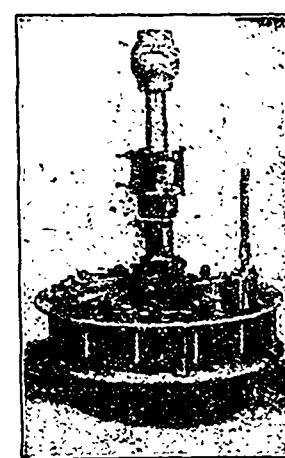
F. J. DRAKE, - Belleville, Ont.

Do You Need a Turbine?



Now is the best possible time for replacing your old, worn-out wheel with a new Turbine that will save Worry, save Time, and make Money for you. If you want a well built wheel, a wheel that will give you steady reliable power every day, a wheel that will save water, a wheel that will last you a lifetime, and that is sold at a reasonable price, then write us for catalogue and prices on the

Standard Leffel and Vulcan Turbines.



They are better developers to-day than ever before, and are growing in popularity, as our order books show.

We have now for distribution our new **SAW** and **SHINGLE MILL MACHINERY CATALOGUES**, with engravings and descriptions of our machines with their latest improvements. We will be glad to send you one on receipt of your address. You cannot buy a better Portable Mill than the "Lane Improved".

MADISON WILLIAMS, PORT PERRY, ONT.

H. E. PLANT, Agent,
Cor. Common & Nazareth Sts., MONTREAL.

SUCCESSOR TO
PAXTON, TATE & CO.

Winnipeg Machinery & Supply Co.
Western Selling Agents, Winnipeg