

Hamilton.

THE AMBITIOUS CITY.

THE BIRMINGHAM OF CANADA

And to D. P. A. Members

THE CONVENTION CITY.

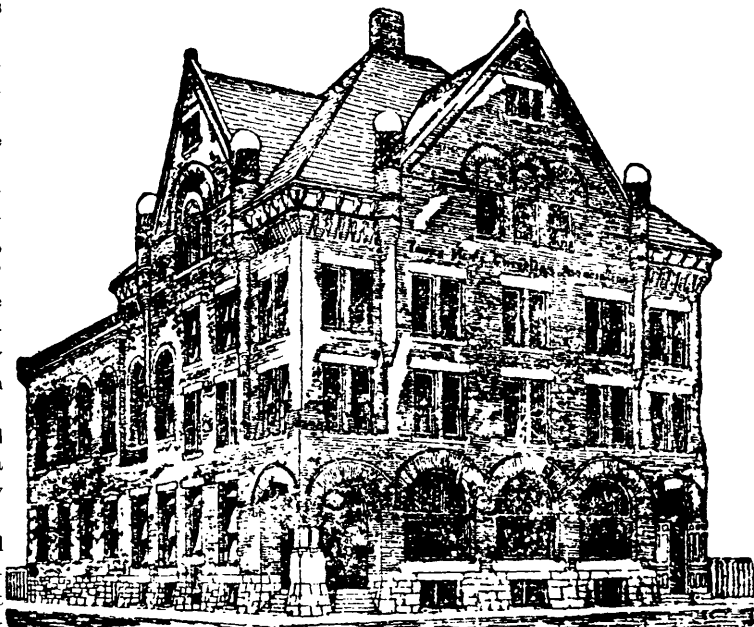
HAMILTON is beautifully situated at the foot of the Hamilton Mountain and on Hamilton Bay—the head of navigation on Lake Ontario. The city and suburbs now have a population of over 55,000. It has easy access to the whole continent and has direct connection with three great Canadian lines of railways as well as two lines of steamers plying between different ports on the great chain of lakes. Hamilton has 54 churches of all denominations and two large convents, 3 weekly and three daily papers. Philatelically it is the “City of Stamp Collectors,” having more active collectors than any other city in Canada.

Space will not permit a more lengthy description.

Come and see for yourself. Don't leave without paying a visit

to the mountain, from the top of which the most magnificent view on the continent may be seen—The city lying immediately below, the bay, beach and canal in the distance, while beyond the beach, stretches the broad blue waters of Lake Ontario, while on a clear day the church-spires of Toronto (40 miles distant) may be dimly discerned. The whole view forming a grand panorama which must be seen to be appreciated.

Non-members will be welcome to the city and the Secy of the Hamilton Stamp Club would like to hear from any who expect to attend what will undoubtedly be the greatest gathering of its kind ever held in the Dominion.



HALL WHERE THE CONVENTION WILL BE HELD.