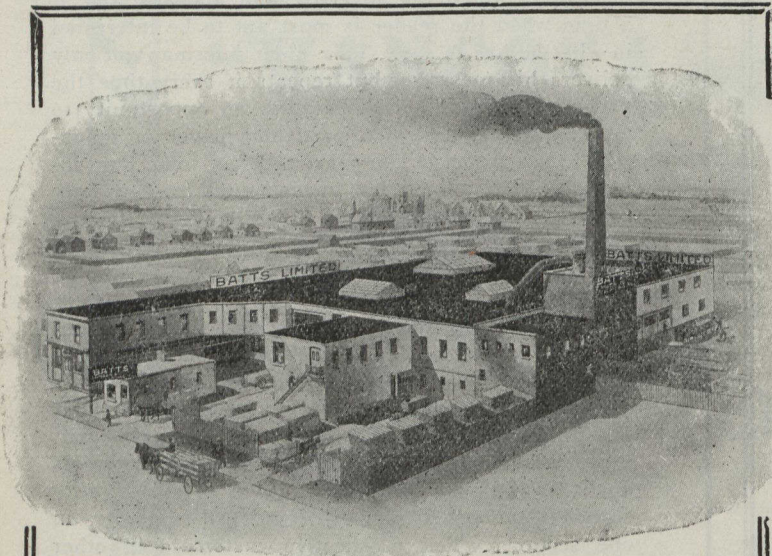


"Landscape Gardening"

In planting a new lawn or remodelling an old garden it is advisable to secure the services of an expert—one acquainted with the peculiarities of trees, shrubs and plants—to help in grouping and arranging them in the most effective way. The grouping of trees and shrubs should be arranged so that they will produce a harmonious setting that makes the lawn and garden abound in interest and beauty. Let us, who have had over thirty years' experience in handling nursery stock, assist you in your work. We have recently engaged the services of an expert landscape architect (Mr. Max Stolpe), who has had twenty years experience in Germany, Austria, Switzerland and Canada. Mr. Stolpe is qualified to lay out large parks or private estates, new gardens, cemeteries and small garden lots. Consult us about planting plans that will help you to obtain immediate results. We solicit correspondence with all who contemplate any landscape work.

E. D. SMITH, - NURSERY DEPT. - WINONA, ONTARIO



FACTORY OF

BATTS LIMITED

MANUFACTURERS OF

CYPRESS GREENHOUSE MATERIAL

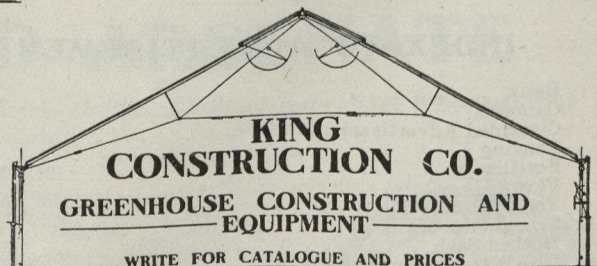
50 PACIFIC AVENUE, WEST TORONTO

KING GREENHOUSES

Are the most

MODERN AND PERMANENT

Greenhouses that can be constructed. Years of actual test and the experience of large and small growers have gained for our houses the reputation of being the most satisfactory ever erected for vegetable or flower growing, or private conservatories.



Plans prepared for complete plants and equipment at a moderate cost: all or part of the necessary materials supplied and houses of any size erected under our personal supervision if desired by builder.

Write and tell us the kind of houses you desire to erect or ask for question blank and we will mail you our descriptive bulletin by return of mail.

THE KING CONSTRUCTION CO.
248 Wellington St. West TORONTO, ONT.

Mention The Canadian Horticulturist when writing.