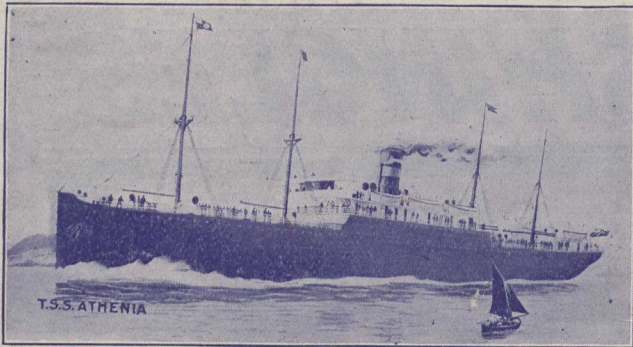


DONALDSON LINE

WEEKLY SAILINGS TO GLASGOW



Sailings from MONTREAL every THURSDAY Morning at Daylight

The Best Line for Fruit and Perishables. MODERN STEAMERS
PERFECT VENTILATION, SIROCCO FANS, COLD STORAGE

DONALDSON LINE Passenger and Refrigerator Service

	GROSS REGISTER
S. S. ALCIDES	3,421 tons
S. S. ALMORA	4,885 "
S. S. ATHENIA Twin Screw (Cold Storage)	9,080 "
S. S. CASSANDRA Twin Screw (Cold Storage)	8,135 "
S. S. CONCORDIA	2,544 "
S. S. HESTIA	3,764 "
S. S. INDRANI	3,640 "
S. S. KASTALIA (Cold Storage)	4,039 "
S. S. LAKONIA (Cold Storage)	4,686 "
S. S. MARINA (Cold Storage)	5,204 "
S. S. ORTHIA	4,225 "
S. S. PARTHENIA (Cold Storage)	5,160 "
S. S. SALACIA	4,134 "
S. S. TRITONIA (Cool Air)	4,272 "

The Twin Screw Steamers "ATHENIA" and "CASSANDRA" have splendid one class cabin accommodation, which enables passengers to travel in comfort at second cabin rates, from \$42.50 to \$60.00; Third class, \$26.50 to \$31.00. Other steamers of the line carry cabin passengers only at \$42.50.

Write for Illustrated Booklet and Folders.

THOMSON LINE

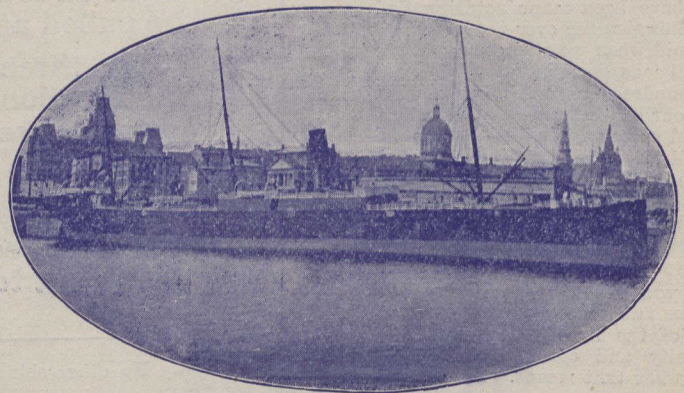
WEEKLY SAILINGS TO LONDON

SAILINGS FROM MONTREAL EVERY SATURDAY MORNING AT DAYLIGHT

The Pioneer Steamship Line in the Montreal-London service, running vessels fully equipped with modern Cold Storage and Cool Air Compartments for the proper carriage of APPLES, CHEESE, BUTTER, BACON and all other perishable cargo.

THOMSON LINE Atlantic Refrigerator Service

S. S. BELLONA	4,050 tons
S. S. CERVONA (Cold Storage and Cool Air)	6,000 "
S. S. DEVONA (Cold Storage and Cool Air)	6,000 "
S. S. ESCALONA	2,600 "
S. S. FREMONA	4,300 "
S. S. HURONA (Cold Storage and Cool Air)	5,000 "
S. S. IONA (Cold Storage and Cool Air)	5,000 "
S. S. JACONA	4,050 "
S. S. KILDONA (Cold Storage and Cool Air)	5,800 "
S. S. CAIRNRONA (Cold Storage and Cool Air) ..	9,000 "



ALSO SAILINGS TO NEWCASTLE, LEITH AND ABERDEEN
FOR FULL INFORMATION AND RATES ASK THE RAILWAY AGENT, OR

The Robert Reford Company, Limited

110 UNION STATION, TORONTO, ONTARIO

HEAD OFFICE--MONTREAL, QUE.

BRANCHES--QUEBEC, ST. JOHN, N.B., and PORTLAND, MAINE

Mention The Canadian Horticulturist when writing.