

INCORPORATED 1886 TORONTO HON. G. W. ALLAN PRESIDENT

CONSERVATORY OF MUSIC

EDWARD FISHER, Musical Director
NEW CALENDAR 32 pages, giving full information, mailed free
Thorough Training in all Branches from the Rudiments to Graduation
Scholarships, Diplomas, Certificates, Medals, etc.
H. N. SHAW, B.A., Principal Elocution School, Elocution, Oratory, Voice Culture, De'sarte and Swedish Gymnastics, Literature, &c.

Trinity College School, PORT HOPE.

Michaelmas Term will begin
On THURSDAY SEPT. 6th, 1894.

Applications for admission and for a copy of the School Calendar may be made to the
REV. C. J. S. BETHUNE, D.C.L., Head Master.

Hellmuth Ladies College LONDON, ONTARIO.

Church School for Young Ladies and Girls
Under the distinguished patronage of
H. R. H. Princess Louise and Her Excellency The Countess of Aberdeen.
Next Term begins Sept 12th.

Diplomas awarded in the following courses: Academic, Music, Art and Elocution.
For circular and full information address
REV. E. N. ENGLISH, M.A. Principal.

DEPOT OF THE Church Extension Association,

418 QUEEN ST. WEST, TORONTO.
Also at 135 James st. north, Hamilton, Ont.

Open daily from 9.30 a.m. to 6.00 p.m., Saturdays 9 to 9.30.

Surplices made to order from \$3.00 up. Garments for Men, Women and Children, New and Second-hand, at Low Prices.

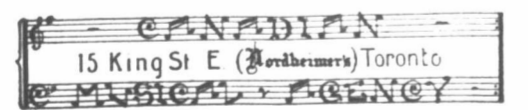
Also Books, Publications, Sacred Pictures and Photographs, Fancy Work, &c.

GEO. F. SMEDLEY,

Banjo, Guitar and Mandolin Soloist.

Instructor University Banjo and Guitar Club and Mandolin Quartette. Teacher Toronto College of Music, Upper Canada College, Bishop Strachan's School.

Residence—98 Nassau St., or Toronto College of Music.



Has the management of all the leading
MUSICAL TALENT

If you are giving a
Concert or Entertainment

save time, money and annoyance by consulting them. Send for illustrated announcement containing portraits, &c., &c.

CANADIAN MUSICAL AGENCY
15 King Street East (Nordheimer's) - TORONTO
H. M. HIESCHBERG, Manager.

Stained Glass Memorial Windows
WRITE FOR DESIGNS AND PRICES.

Bishop Bethune College

OSHAWA, Ont.

UNDER THE CHARGE OF

The Sisters of St. John the Divine.
Visitor, the Lord Bishop of Toronto.

For terms and particulars apply to THE SISTER IN CHARGE, or to
The Sisters of St. John the Divine,
Major Street, TORONTO.

Next Term. November 10th, 1894.

Bishop Strachan School FOR GIRLS.

ESTABLISHED 1867

PREPARES, if desired, for the Departmental Examinations. Fees for resident pupils from \$228 to \$252 per annum, with an entrance fee of \$12. Discount for sisters, daughters of clergymen, or pupils making yearly payments in advance.

School Re-opens (First Wednesday) in September.
Apply for Calendar containing Course of Study, &c., &c. to
MISS GRIER, Lady Principal.

THE CHURCH OF ENGLAND

DAY SCHOOLS FOR GIRLS,

53 Beverley Street, Toronto.

Under the management of the Sisters of the Church.

Next Term Commences Sept. 10th.

Fees—In Ottawa and Hamilton, \$5 for English and French; ditto in Toronto, \$3.

Music, Dancing, and German or Latin extra.

DANCING.

All Society Dances taught in one term. Classes forming for ladies or gentlemen. Satisfaction guaranteed. Private pupils per appointment. Call or send for prospectus. Special terms to schools and seminaries, &c.

C. F. DAVIS,

Academy and Residence—206 Spadina ave.



P. W. Newton,

Teacher of Guitar, Banjo and Mandolin. Private lessons, thorough instruction. Clubs conducted reasonably.
Studio, Nordheimer's Music store, 15 King St. East. Telephone 749.
Residence, 6 Irwin Avenue.

Three New Subscribers

We will mail to any person sending us three new yearly prepaid subscribers to the CANADIAN CHURCHMAN, beautiful books artistically illustrated in Monotint and Colour, worth \$1.00.

FRANK WOOTTEN,

"Canadian Churchman."

Offices—Cor. Church and Court Sts., Toronto.

Elias Rogers & Co.



Coal - Wood

JONES & WILLIS, Church Furniture Mfrs

ART WORKERS IN

Metal, Wood, Stone and Textile Fabrics.

43 GREAT RUSSELL STREET,
(Opposite the British Museum.)

LONDON, W.C.

AND EDMUND STREET,

BIRMINGHAM, ENGLAND.
Concert St., Bold St., LIVERPOOL.

Church Brass Work.

Eagle and Rail Lecterns, Altar Vases, Ewers, Candlesticks, Altar Desks, Crosses, Vesper Lights, Altar Rails, &c. Chandeliers and Gas Fixtures.

JOHN A. CHADWICK,

MANUFACTURER,

136 King St. East, Hamilton, Ont.

HAMILTON STAINED GLASS WORKS

Church and Domestic Stained Glass

Of Every Description.
HENRY LONGHURST,
14 John St. North, Hamilton.

McCAUSLAND & SON Memorial Windows

Superior General Church Glass
HIGHEST AWARD CHICAGO.
76 King Street West, Toronto.

1894 Wall Paper.

Our Showroom at 156 Yonge St. is filled to the ceiling with all the

Novelties for Interior Work,

Kindly call and look at our goods, and get prices before purchasing.

Mullin & Muir, 156 Yonge St., TORONTO.



High Class Church Windows!

Hobbs Mfg. Co. London, Ont.
Ask for Designs

Insure in the Agricultural Insurance Co.

Capital, \$500,000.00 Assets, \$2,262,018.07

Deposit with Dominion Govt., \$152,928.00

GEO. H. MAURER, Manager.
WILLIAMS & DICKSON, Toronto Agents.

Head Office: Freehold Loan Bldgs., Toronto.

ALTAR BREADS—100 for Communicants, of 25 for Priests, plain or stamped. THOS. PRATT & SONS, Church Furnishers, Tavistock Street, Covent Gardens, London, England.

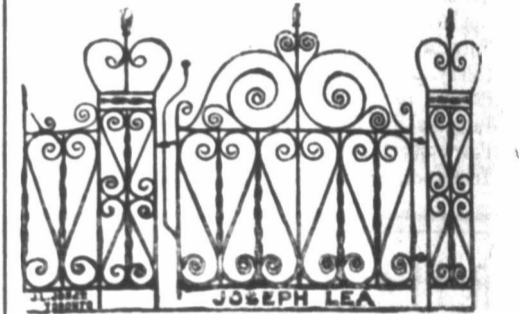
INCENSE of finest Gums, 1 lb. tins 1s. 1s. 6d., 2s. 6d., 3s. 6d., 5s., 7s. 6d., 10s., 15s. and 21s. THOS. PRATT & SONS, Church Furnishers, Tavistock Street, London, W.C., England.

BRASS Candlesticks, Vases, Altar-dishes, Crosses, and every description of church work can be seen at THOS. PRATT & SONS, Tavistock-street, Covent Garden, London, Eng.

PROFESSIONAL Banners in Oil Colours, painted on banner cloth or silk. Estimates, free, and designs submitted by THOMAS PRATT & SONS, Covent Garden, London, W.C., Eng.

SHIPPING and Commission Agents to the Colonial Bishops and Clergy in every part of the world. THOS. PRATT & SONS, Tavistock-street, Covent Garden, London, W.C., England.

STAINED GLASS
And Church Furnishings
Castle & Son,
20 University St., Montreal



Fence & Ornamental Iron Works

73 Adelaide St. W., Toronto.
Formerly of St. Thomas.
Manufacturers of Iron Fencing and every Description of Ornamental Iron Work.

Special attention given to architect's work, either by contract or by the hour. Special designs furnished. Catalogues on application.
JOSEPH LEA, Manager.

Church Brass Work.



Memorial Pulpits Lecterns, Ewers Gas & Electric Lighting Fixtures, &c

Designs, workmanship and prices guaranteed satisfactory.

The Keith & Fitzsimons Co., Ltd.
111 King St. W., Toronto.
Write for Catalogue.

GRAPHOLOGY

Character delineated from hand writing. Instructions—Send if possible a whole sheet ordinary writing, not studied; signature indispensable. Fee, 25 cents and stamped envelope. Proceeds for church purposes. Address, F. E. B., "Belatoo Bungalow," Qu'Appelle Station, Assa., N.W.T.

MEMORIAL STAINED GLASS WINDOWS
N.T. LYON, TORONTO