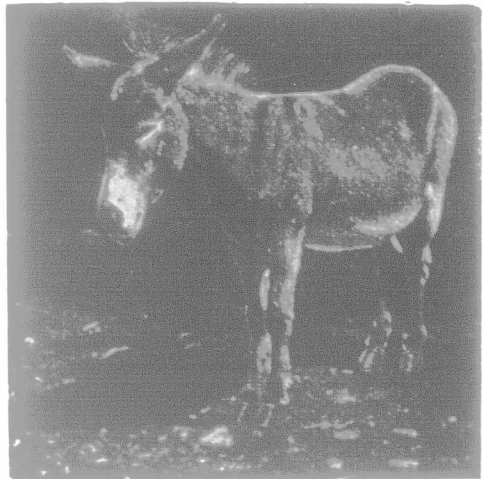


ESTABLISHED 1866.  
**GEORGE KEITH**  
 for sure-growing  
**SEEDS**  
 Finest Quality. Send for Catalogue.  
 124 KING STREET E., TORONTO.

## BINDER TWINE

The man that don't realize the importance of sustaining this co-operative twine movement with his patronage and influence is little better than a



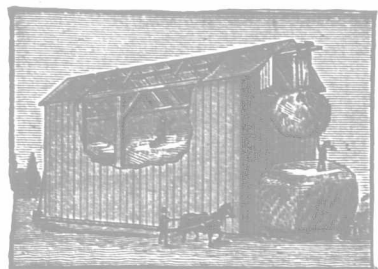
**FARMERS' CO-OPERATIVE BINDER TWINE COMPANY, Limited, Brantford.** With its thousands of stockholders, is again ahead in the great Binder Twine race for the harvest of 1900. Competition defied. Red Star (magnificent), 12jc.; Blue Star, 11jc.; Standard, 10jc. Mill running full tilt. Raw material bought right. See our farmer agents at once. Farmers, you would have paid 16c. to 20c. a pound this coming season for twine had it not been for the existence of this Co-operative Company. Opposition—"Buy us you can't. Lease us you cannot. Crush us if you can. We hold you at defiance so long as the farmers are loyal to their trust." Order early, this is your last warning.

**JOSEPH STRATFORD,**  
 GENERAL MANAGER.

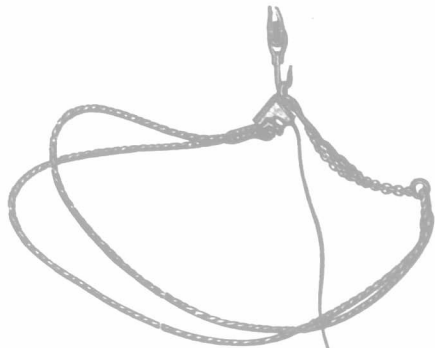


**BINDER TWINE.**—The time for receiving orders from farmers for Binder Twine manufactured at Kingston Penitentiary has been extended to 1st May next. Further particulars on application to J. M. PLATT, Warden of Penitentiary, Kingston.

**BUCHANAN'S**  
 (Malleable Improved)  
**PITCHING MACHINE**  
 For unloading hay and all kinds of loose grain.



Unloads on either side of barn floor without changing car. No climbing necessary. Malleable iron Cars. Steel Forks. Knot Passing Pulleys. Will work on stacks as well as in barns. Satisfaction guaranteed.



**The Common-Sense Sheaf-Lifter**  
 Works in connection with Pitching Machine, and is the most complete apparatus ever offered to the public for pitching sheaves. Sheaves left in the mow just as they come from the load.

**RESPONSIBLE AGENTS WANTED**  
 Circulars, Prices and Terms on application to  
**M. T. BUCHANAN & CO., Ingersoll, Can.**

## "Canada's Greatest Seed House"



## NEW SEED OATS

THAT WILL MAKE  
**THE FARM PAY.**

## NEW IMPROVED "LIGOWO" OAT

**THE HEAVIEST CROPPER KNOWN**  
 Yielded 100 bush. 20 lbs. per acre at Brandon Experimental Farm in 1899.

The Improved "Ligowo" Oat is a large, plump, white variety, with a branching head and stiff straw, a vigorous grower, very prolific, and exceedingly early. It has been grown and tested at all the Experimental Farms, and has given as a result of four years' trial an average crop of 64 BUSH., 6 LBS. PER ACRE. With such favorable results as above reported by the Dominion Experimental Farms, we were induced to procure a supply of seed stock from the original source in France, and now offer for the first time the Improved Ligowo Oats grown from imported stock. Price per lb., 25c.; 5 lbs. for \$1 (post-paid); ¼ bush., \$1.25; bush., \$2.00; 5 bush. lots and over, \$1.90 per bush.; bags, 20c. each extra.

## NEW "SENSATION" OAT

**Very large Grain, Best Quality, Strong Straw**

It is impossible to over-estimate the good qualities of this New White Branching Oat. It has been grown in this vicinity the past year with extraordinary results. The grain is of good size, the hulls are thin, and the kernel is the largest in proportion to the size of the oat we have yet seen,

making it the best variety grown for feeding and milling purposes. The Sensation stools out well, and the straw is very strong, and does not lodge, even when others with a less weight of head go down. It is a very vigorous grower, quite noticeably so when seen growing beside other varieties. It is bound to take a leading place, and will, no doubt, become a very popular variety. Price per lb., 15c.; 4 lbs., 50c. (post-paid); bush., \$1; 5 bush. lots, 90c. per bush.; 10 bush. lots and over, 90c. per bush.; bags, 20c. each extra.

## IMPROVED "AMERICAN" OAT

This splendid oat has already proved itself to be entitled to rank among the very first and best varieties. It is a heavy growing strong strawed variety, and is of such vigorous constitution as to be almost proof against rust and other diseases. The grain is large, white, thin hulled, and in every respect first-class. Price per bush., 75c.; 5 bush. lots and over, 70c. per bush.; 10 bush. lots and over, 65c. per bush.; bags, 20c. each extra.

## SELECTED "BLACK TARTARIAN" OAT

It is extremely hardy, grows with vigor and rapidity, stands well, and adapts itself to almost any soil. Grain very black, large and plump. Our seed is grown from imported stock. Price per bush., 70c.; 5 bush. lots, 65c. per bush.; 10 bush. lots and over, 60c. per bush.; bags, 20c. each extra.

**STOCKS** of these new and improved oats are limited; order early and avoid disappointment. The bushel prices are for shipment from Toronto.

You can get Steele, Briggs' Famous Garden and Flower Seeds from your Resident Merchant, or send for them direct. **THE BEST SEEDS THAT GROW.**

A Handsome Illustrated 112 Page Catalogue Free, send for one to-day.

**The Steele, Briggs Seed Co., LIMITED**  
 TORONTO, Ont.

## GOSSIP.

In writing to advertisers, mention the "Farmer's Advocate."

**ALEX. HUME & CO.'S AYRSHIRES.**

With each succeeding generation of Ayrshire cattle in the hands of Mr. Alex. Hume, near Menie, Ont., may be found greater uniformity and increasing quality, which can only follow judicious mating and careful development. When we called at the farm early in January, we found a long string of matrons doing service (30 in all), and while they are a splendid lot, we feel that we cannot pass without making a few remarks regarding some individuals: Eva of Barcheskie 2505, by Craigs of Kyle and out of Eva 2nd of Orchardton, was bred by Mr. W. P. Gilmore in Scotland, and is a cow of which any owner may well feel proud, as she carries in her veins the blood of many of Scotland's best families. Three of her daughters are now in the herd, and carry sufficient dairying indications in their make-up

to justify high hopes for their future. We also saw about a dozen three- and four-year-old daughters of White Chief of St. Annes, which are due to calve in the spring, and upwards of 20 head of youngsters by the same sire, all showing the best Ayrshire characteristics, with their beautiful glossy and well-marked skins of finest texture, indicating superior quality and vigorous digestive and assimilating qualities. Much careful study has been given the subject of judicious mating and the selection of proper sires. White Chief of St. Annes has done much valuable service in this herd, and one cannot but be impressed by the uniformity of his progeny, which, no doubt, traces to his strength of breeding. His dam, White Floss, was one of the highest Canadian producers, winning wherever shown from her babyhood, from the World's Fair, Chicago, until the present, and we understand she is considered one of the greatest show cows in the United States at the present day, depending, no doubt, largely upon her wonderful constitution—a feature so strongly sought in the Ayrshire cow in the herd of her breeder. Glencairn 3rd

(Imp.) also proved himself one of the best sires, and did much valuable service to the breed in this country. We also saw the young bull, Caspian of St. Annes (Imp.), and in him we feel that Mr. Hume has an impressive sire, having sufficient size and a robust constitution, with strong masculine characteristics. Mr. Hume informed us that he has found a ready demand for all salable stock. A few choice fall calves were on hand when we called, and his advertisement in this issue mentions some nice ones of younger age. Parties requiring really choice and well-bred Ayrshires will do well to watch his offerings and act quickly, for they are not the kind that hang long in the market.

In Yorkshires, Mr. Hume has shown rare judgment in making his foundation selections from the noted Haskett family, and as three or four brood sows are kept on hand, he is seldom without young stuff to fill orders. When we called we saw some choice young boars and sows ready for shipment, in which no mistake can be made in their purchase. Watch Mr. Hume's offerings.